

# **ESSEX COUNTY VOCATIONAL TECHNICAL SCHOOLS**

## **STUDENT PERFORMANCE**

**New Jersey**

**Biology Competency Test**

**2012-2017**

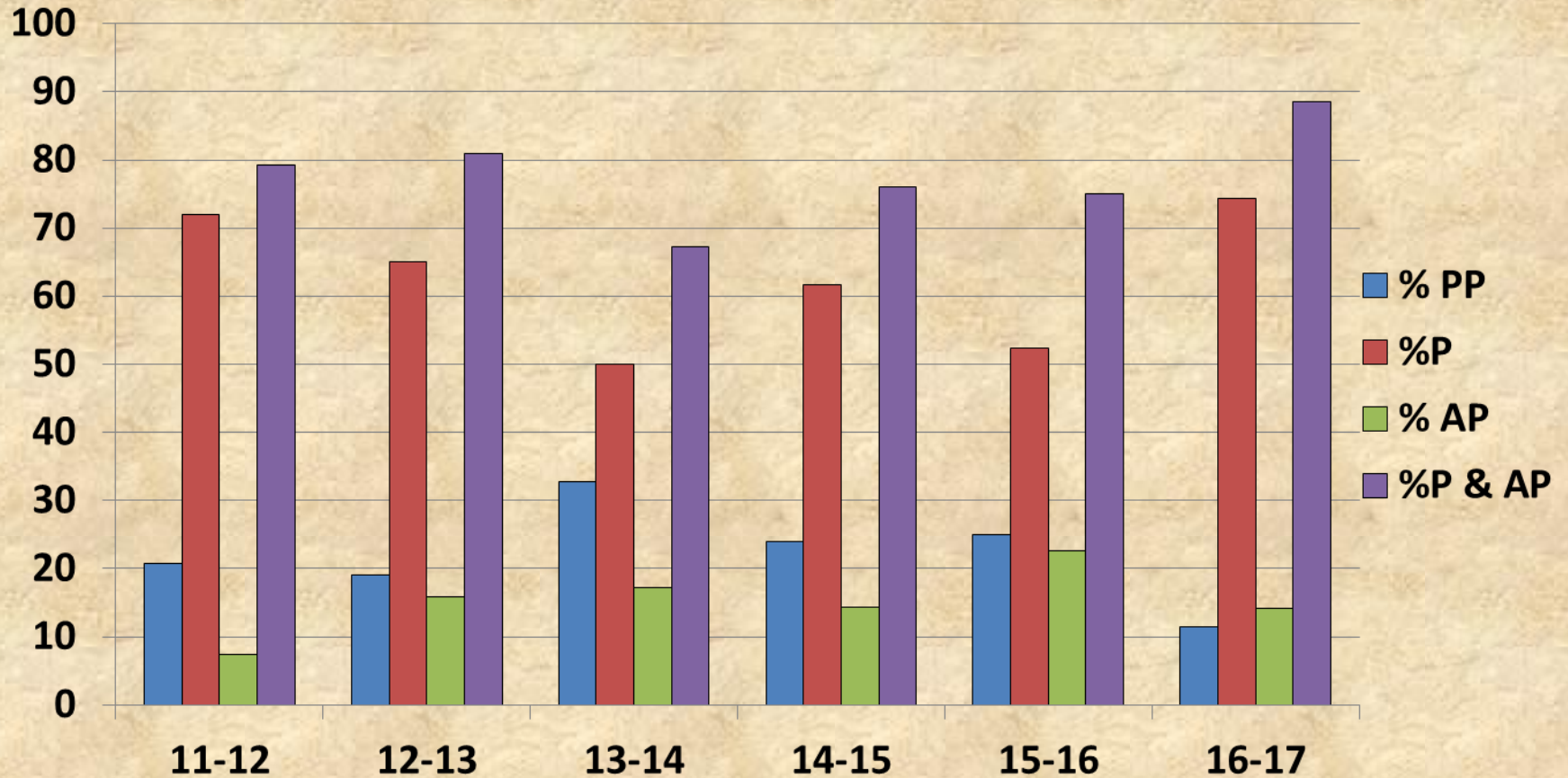
# SIX YEAR PERFORMANCE

## Bloomfield Tech

Year	# Tested	%PP	%P	%AP	%P & AP	%Change
11-12	135	20.7	71.9	7.4	79.3	
12-13	126	19.0	65.1	15.9	81.0	+1.7
13-14	122	32.8	50.0	17.2	67.2	-13.8
14-15	125	24.0	61.6	14.4	76.0	+8.8
15-16	124	25.0	52.4	22.6	75.0	-1.0
16-17	113	11.5	74.3	14.2	88.5	+13.5

# SIX YEAR PERFORMANCE

## Bloomfield Tech



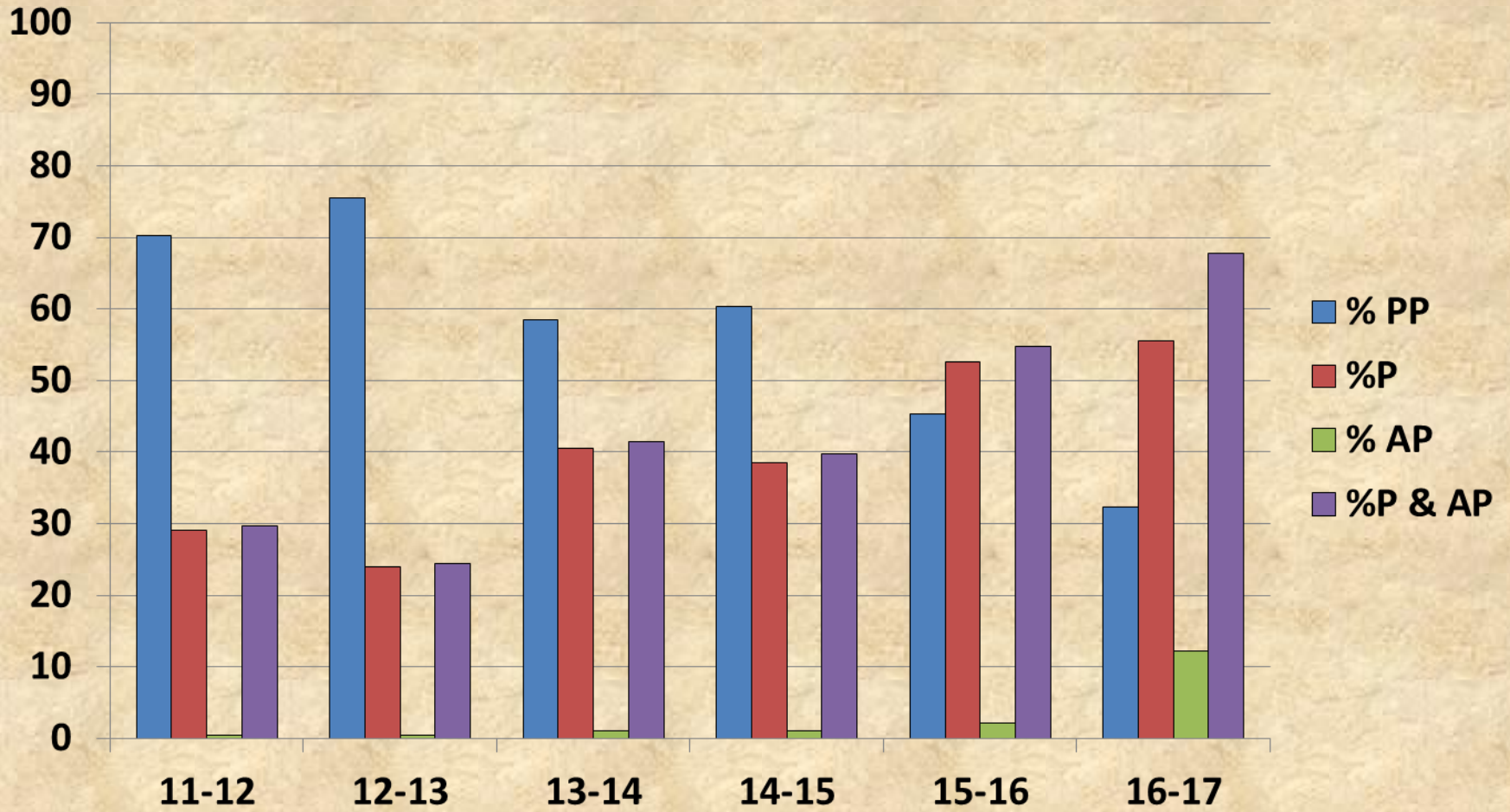
# SIX YEAR PERFORMANCE

## Newark Tech

Year	# Tested	% PP	%P	% AP	%P & AP	Change
11-12	182	70.3	29.1	0.5	29.7	
12-13	196	75.5	24.0	0.5	24.5	-5.2
13-14	205	58.5	40.5	1.0	41.5	+17.0
14-15	174	60.3	38.5	1.1	39.7	-1.8
15-16	192	45.3	52.6	2.1	54.7	+15.0
16-17	164	32.3	55.5	12.2	67.7	+13

# SIX YEAR PERFORMANCE

## Newark Tech



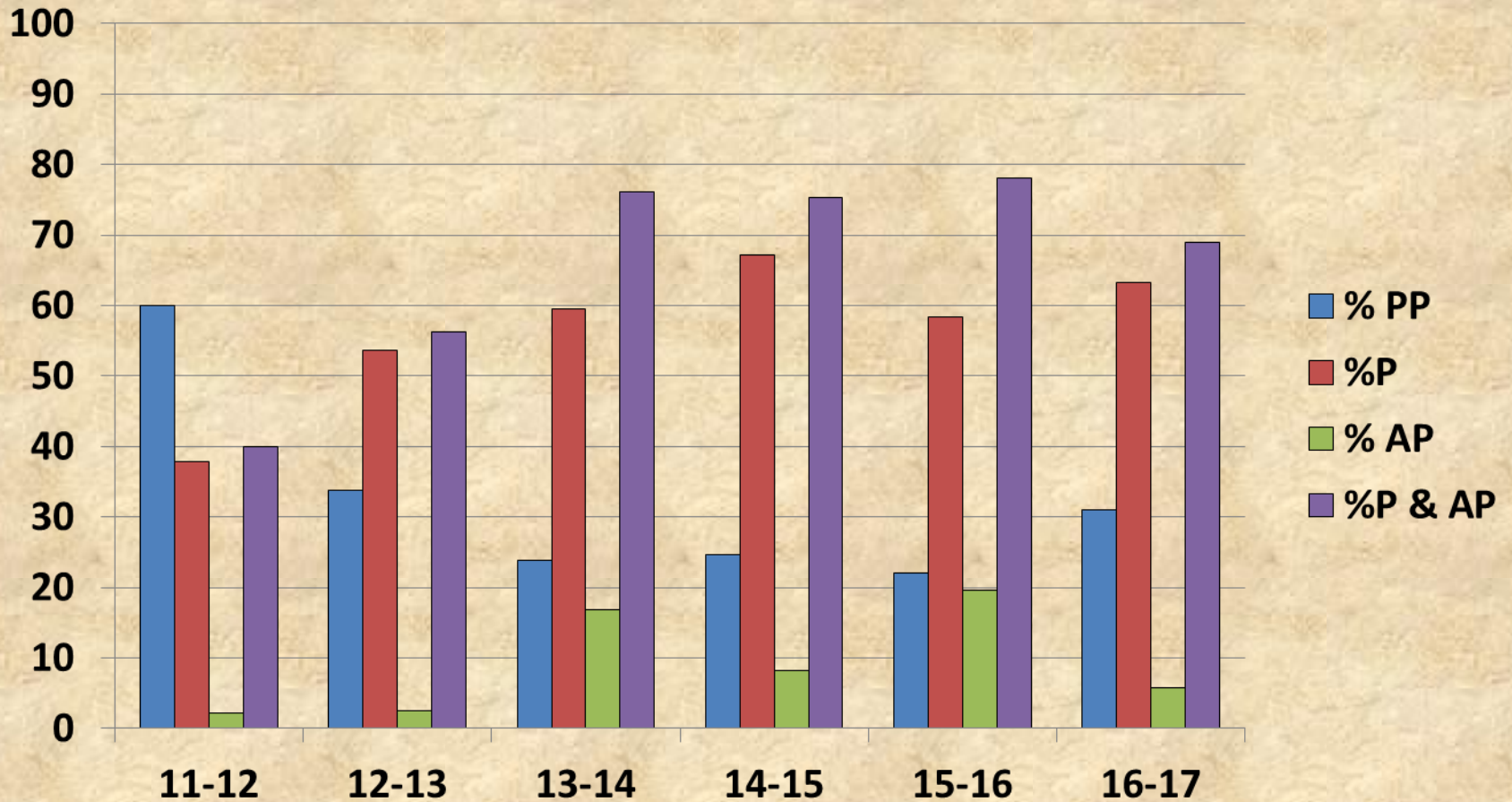
# SIX YEAR PERFORMANCE

## North 13<sup>th</sup> St Tech

Year	# Tested	%PP	%P	%AP	%P&AP	Change
11-12	180	60.0	37.8	2.2	40.0	
12-13	162	33.8	53.7	2.5	56.2	+16.2
13-14	185	23.8	59.5	16.8	76.2	+20.0
14-15	170	24.7	67.1	8.2	75.3	-0.9
15-16	173	22.0	58.4	19.7	78.1	+2.7
16-17	155	31.0	63.2	5.8	69.0	-9.1

# SIX YEAR PERFORMANCE

## North 13<sup>th</sup> St Tech



# SIX YEAR PERFORMANCE

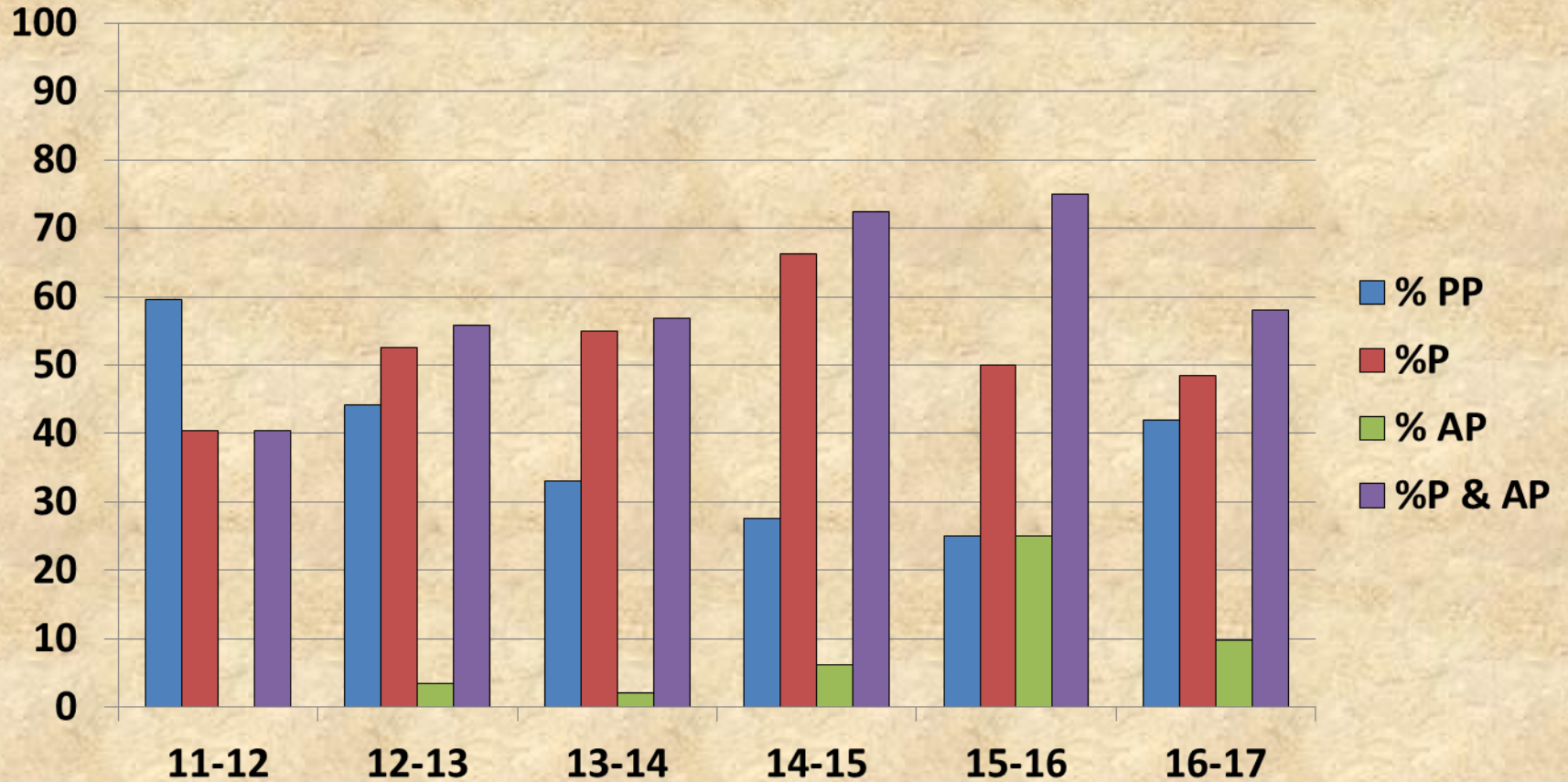
## West Caldwell Tech

Year	# Tested	%PP	%P	% AP	%P&AP	Change
11-12	47	59.6	40.4	0.0	40.4	
12-13	59	44.1	52.5	3.4	55.9	+15.5
13-14	51	33.1	54.9	2.0	56.9	+0.9
14-15	65	27.6	66.2	6.2	72.4	+15.4
15-16	60	25.0	50.0	25.0	75.0	+2.6
16-17	62	41.9	48.4	9.7	58.0	-17.0



# SIX YEAR PERFORMANCE

## West Caldwell Tech



# SIX YEAR PERFORMANCE

## District

Year	# Tested	%PP	%P	% AP	%P&AP	Change
11-12	544	53.7	43.6	2.8	46.3	
12-13	543	49.5	45.5	5.0	50.5	+4.2
13-14	563	40.1	50.1	9.8	59.9	+9.4
14-15	534	36.5	56.4	7.1	63.5	+3.6
15-16	548	31	54.2	14.8	69.0	+5.5
16-17	494	28.3	61.3	10.3	71.7	+2.7

# SIX YEAR PERFORMANCE

## District

