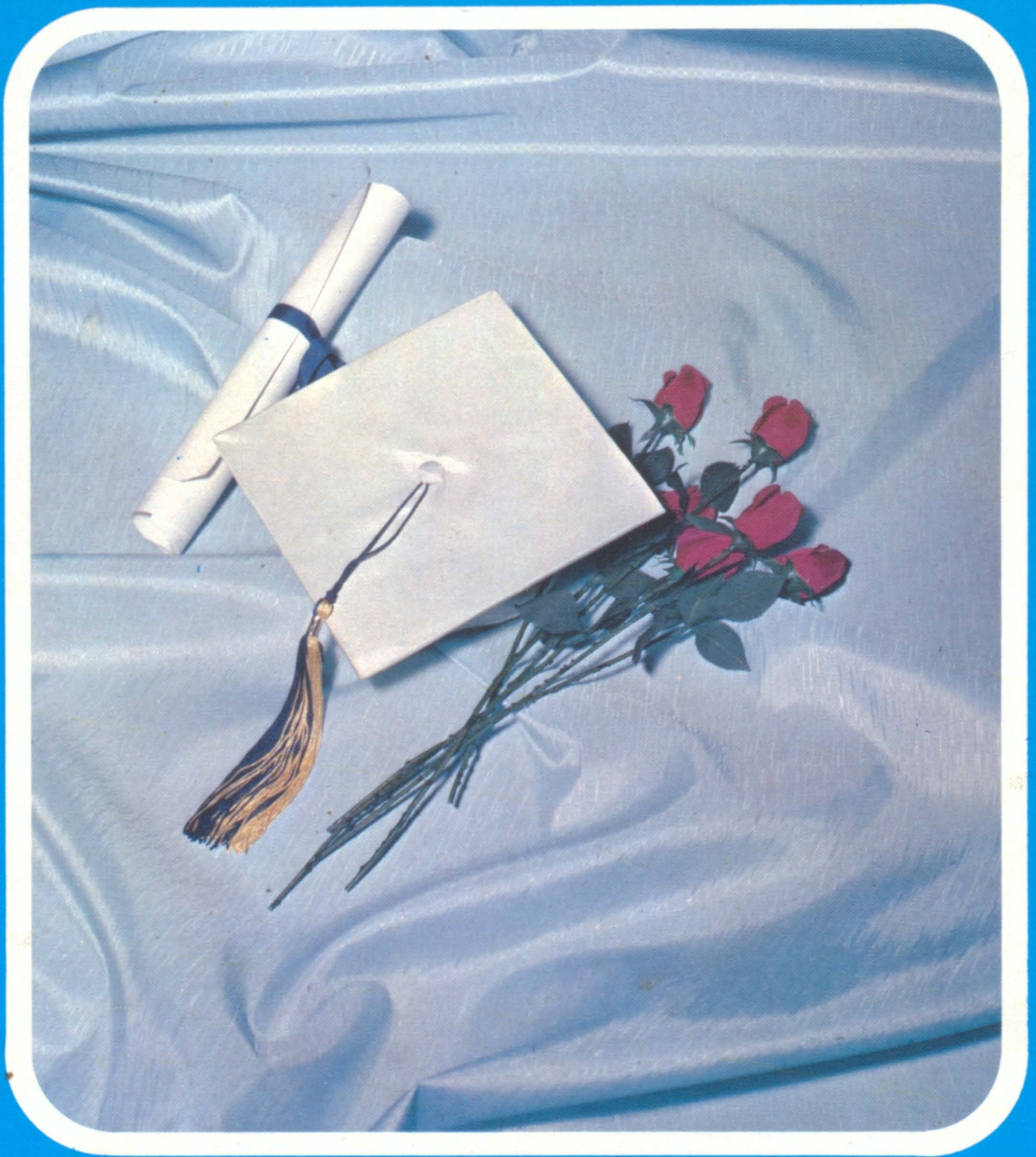


Athena 78





ESSEX COUNTY
VOCATIONAL
SCHOOL





The Yearbook Staff Proudly Presents



ATHENA 1978



C. HARRIS
LAYOUT



M. GARCIA
LAYOUT



C. APOSTOL
CO-EDITOR



R. COPELAND
CO-EDITOR



N. HOWARD
LAYOUT



A. STROUBLE
LAYOUT



C. CAPIZZI
LAYOUT



A. MONTAGUE
PHOTOGRAPHER



G. VIOLA
PHOTOGRAPHER



R. GALANTE
TYPING



G. FREEMAN
TYPING



A. ORTIZ
TYPING



A. PAGAN
TYPING



R. TIMMONS
TYPING



H. TENORE
ADVERTISING



R. LAMOLA
STAFF



M. MARTINEZ
STAFF



J. DI SARNO
STAFF



C. KILCOYNE
STAFF



A. BAILEY
STAFF



J. LUZZI
STAFF



V. DEL GUERCIO
STAFF



B. CETRULO
STAFF



D. VALDES
STAFF



MR. L. LOUIS
FINANCIAL ADVISOR



R. JAFFE
YEARBOOK ADVISOR

YEARBOOK STAFF



What do you mean you can't draw?



This goes here!

WE'LL MISS YOU



MRS. KELLEY



I can hardly wait to see what's in here



For ME!



Oh, I can use this for "thus and so!"

SENIOR CLASS OFFICERS



GAIL PEPE
PRESIDENT



JOYLYN LOTT
VICE PRESIDENT



MRS. M. SELTER
SENIOR CLASS ADVISOR



CRYSTAL ANDERSON
SECRETARY



VICKI DEL GUERCIO
TREASURER

ISTRATION & FACULTYADMINIS
STRATION & FACULTYADMINIST
TRATION & FACULTYADMINISTR
RATION & FACULTYADMINISTR
ATION & FACULTYADMINISTRAT
TION & FACULTYADMINISTRATIO
ION & FACULTYADMINISTRATION
N & FACULTYADMINISTRATION
& FACULTYADMINISTRATION &
& FACULTYADMINISTRATION & F
FACULTYADMINISTRATION & FA
ACULTYADMINISTRATION & FAC
CULTYADMINISTRATION & FACU
ULTYADMINISTRATION & FACU
LTADMINISTRATION & FACULT
TYADMINISTRATION & FACULTY
YADMINISTRATION & FACULTY
ADMINISTRATION & FACULTYA
ADMINISTRATION & FACULTYAD
ADMINISTRATION & FACULTYADM
MINISTRATION & FACULTYADM
MINISTRATION & FACULTYADMIN
NISTRATION & FACULTYADMINI



CONGRATULATIONS ON THE COMPLETION OF YOUR HIGH SCHOOL DAYS. THESE YEARS HAVE REALLY GONE QUICKLY AND I HOPE THEY HAVE NOT BEEN "TOO BAD". THE NEXT FOUR YEARS SHOULD BE FULL OF NEW EVENTS FOR YOU AND AGAIN, I HOPE, THEY WILL NOT BE "TOO BAD". HOW MUCH YOU ENJOY THE FUTURE WILL DEPEND ON YOU A GREAT DEAL. IF YOU WAIT FOR THINGS TO HAPPEN, THEY WILL, BUT YOU CAN START RIGHT AWAY HELPING THE RIGHT THINGS HAPPEN. THINK OF FOUR MORE YEARS AND ASK YOURSELF WHAT YOU WANT TO BE BY THEN. ONCE YOU KNOW, WORK FOR THAT GOAL. PERHAPS THE SADDEST THING THAT HAPPENS AFTER GRADUATION IS THAT PEOPLE JUST WANDER ABOUT FOR A YEAR OR TWO OR MORE. WITH A GOOD GOAL THAT WON'T OCCUR. THE BEST TO YOU ALL —

THOMAS J. BIGLIN



SANDRA MAURIELLO
SECRETARY



EVELYN RACHIELE
SECRETARY



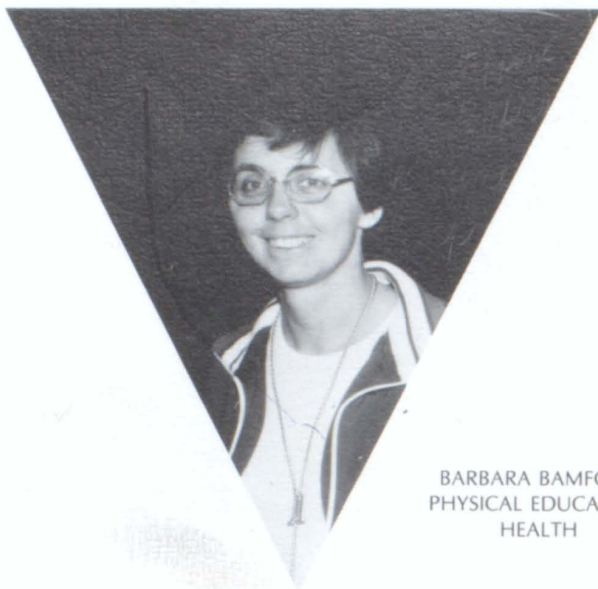
BERTINA PANTANO
SECRETARY



COLUMBIA PESCATORE
SECRETARY



MARY MAHON
SECRETARY



BARBARA BAMFORD
PHYSICAL EDUCATION
HEALTH



JOSELYN BAUM
HEALTH EDUCATION

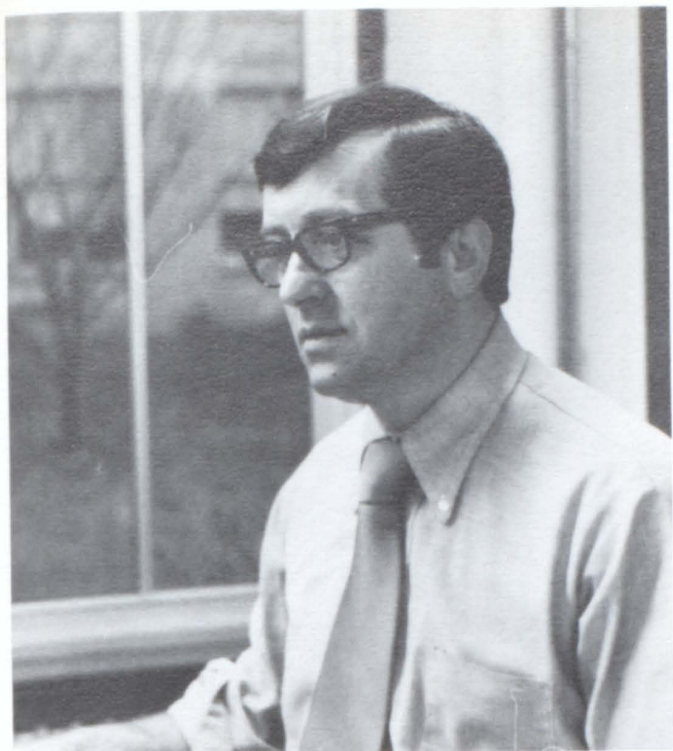
ALBA BRUNETTO
REMEDIAL READING



CARMELL BUCCELLI
BEAUTY CULTURE



JOSEPH BUCCINO
GUIDANCE COUNSELOR



VINCENT BYRON
TYPE SETTING



MARY CAMPI
BEAUTY CULTURE



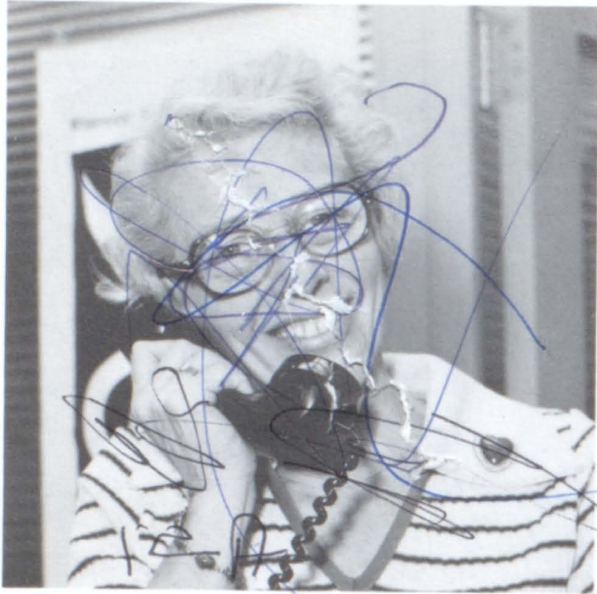
CORINNE CARPENTER
DENTAL ASSISTANT



PATRICIA CARRINGTON
BEAUTY CULTURE



FRANCES CASTELLUCIO
BUSINESS EDUCATION



MARION COLE
GUIDANCE COUNSELOR



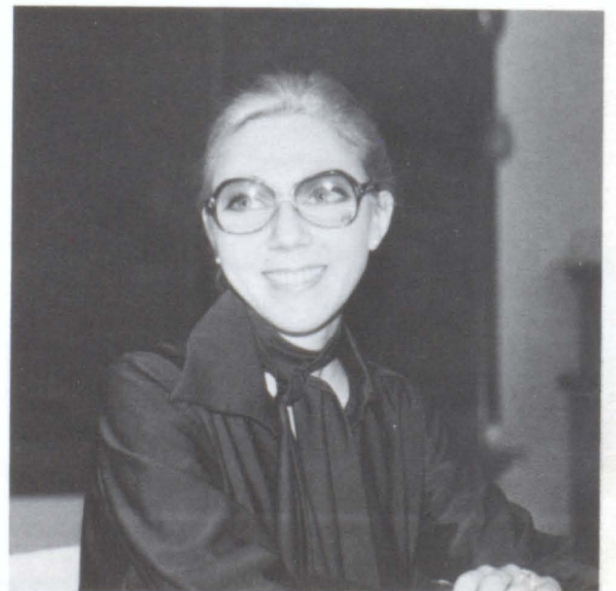
HARRY COTYK
C.I.E. COORDINATOR



PHYLLIS DE COSTA
BEAUTY CULTURE

NORMA DEL SORDI
BEAUTY CULTURE

FRANCES DE LUCA
ENGLISH





ANTHONY DE PASCALE
SCIENCE



GWENDOLYN DICKERSON
BUSINESS EDUCATION



AURORA ECONOMY
HISTORY AND ENGLISH

SHIRLEY EEHALT
BUSINESS EDUCATION

RUTH FITCHETT
PRACTICAL NURSING





ROSEMARY FRANK
NURSE



JANICE GREEN
BUSINESS EDUCATION



WERNER HELMSTAEDTER
HISTORY



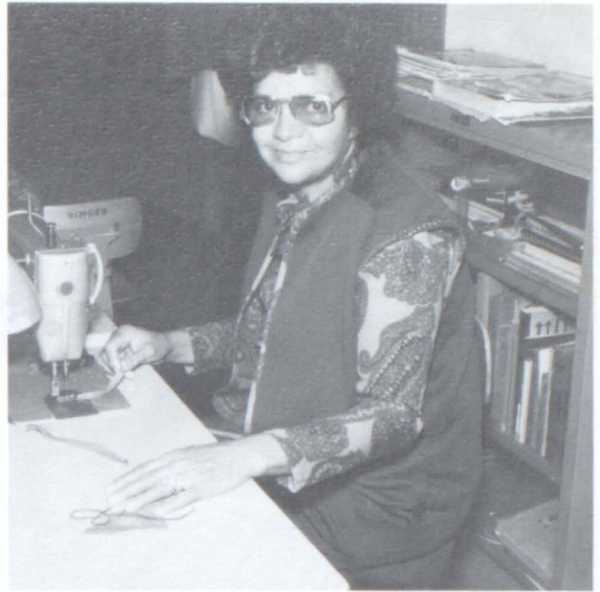
MICHAEL GENEVRINO
DRIVERS EDUCATION



RUDY JAFFE
DRAFTING
YEARBOOK ADVISOR



NORTON JOERG
BUSINESS EDUCATION
STUDENT COUNCIL ADVISOR



VERLIE JOHNSON
DRESSMAKING



DOLLY KELLEY
COMMERCIAL ART

LILA KANTROWITZ
BUSINESS EDUCATION



STANLEY KORF
ELECTRONICS



HALINA KOWALSKI
DRESSMAKING



THOMAS KUZIK
GEOGRAPHY & ENGLISH



MARY ANNE LEFCHAK
BUSINESS EDUCATION

BARBARA LEHMAN
LIBRARIAN

ROSE LINFANTE
BEAUTY CULTURE





LOUIS LOUIS
BUSINESS EDUCATION



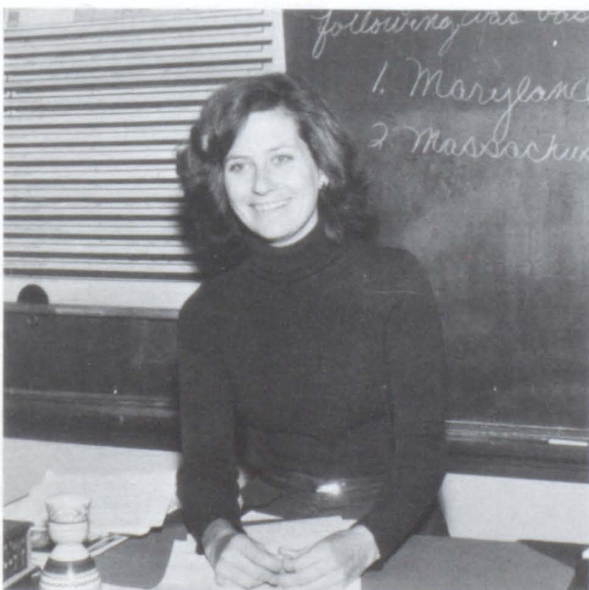
NANCY MANZELLA
SPECIAL EDUCATION



SUSAN MIENTUS
HISTORY



DOLORES MARINARO
ENGLISH



JANICE REISNER
FOOD SERVICE





ROBBERTINA RILEY
PHYSICAL EDUCATION

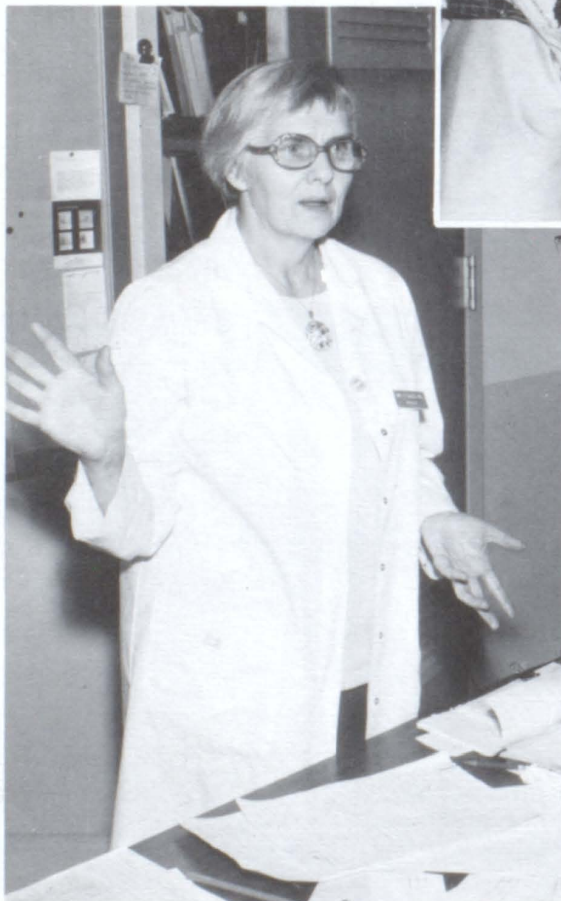


HENRIETTA ROSE
MUSIC



ROSE ROSE
SPECIAL SERVICES

VIOLA SCALES
PRACTICAL NURSING



MATILDE SELTZER
BUSINESS EDUCATION
SENIOR CLASS ADVISOR





DOROTHY SMITH
COSMETOLOGY



LORRAINE SODA
PRACTICAL NURSING



OTEKA TARTAGLIA
DRESSMAKING

MARGARET TACZY
PRACTICAL NURSING

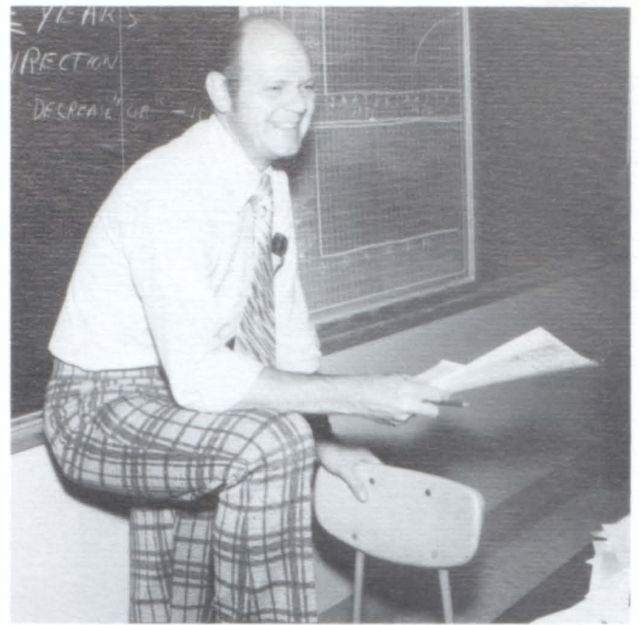


MAUREEN SPINA
DENTAL ASSISTANT





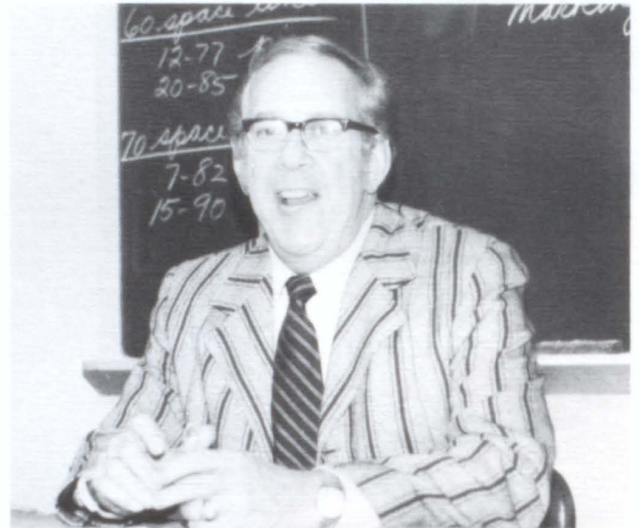
GEORGE THEOS
FOOD SERVICE



EARL ULLMAN
MATHEMATICS AND SCIENCE



EVELYN VEENSTRA
GUIDANCE COUNSELOR



CARL WALTON
BUSINESS EDUCATION



RENA WARD
BUSINESS EDUCATION



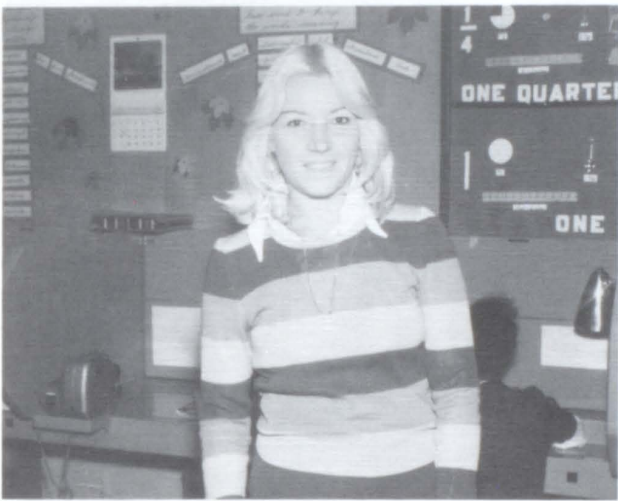
CAROL WOOD
ENGLISH



ROSE ACCARIA



SALLY ACOCELLA



DONNA FREEMAN



NORMA JONES



ANGELA PALMIERI



GENEVIEVE SETTINERI



DEBORAH ALEXANDER
SOCIAL WORKER



ELIZABETH MARION
READING COORDINATOR



CAMILLE RUSSOMANNO
SECRETARY



RALPH CALDERONE, JR.
PSYCHOLOGIST



PETER MELILLO
LEARNING DISABILITY SPECIALIST



MENA McALLISTER
ATTENDANCE OFFICER



MR. ROBERT FIORINI
VICE PRINCIPAL

To The Graduating Class of 1978 —

"Our ingress into the world
Was naked and bare;
Our progress through the world
Is trouble and care;
Our egress from the world
Will be nobody knows where:
But if we do well here
We shall do well there."

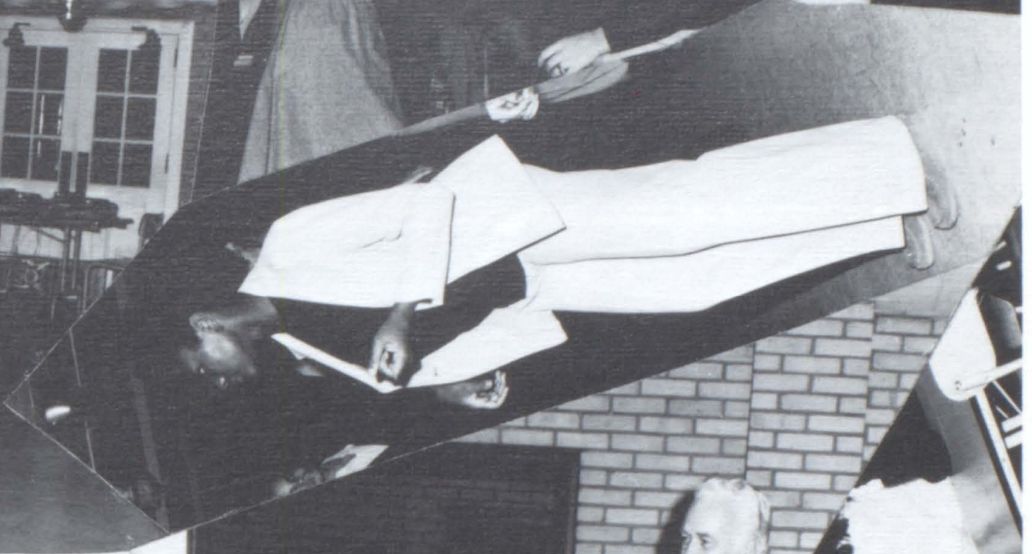
— Longfellow

My heartiest congratulations to each of you on this, your graduation day.
Continue to strive for perfection and you will always experience success and
happiness in life.

Robert Fiorini

FALL DANCE





MAGAZINE DRIVE





S
T
U
D
E
N
T
C
O
U
N
C
I
L



JO ANN DI SARNO PRESIDENT OF STUDENT COUNCIL & MR. N. JOERG STUDENT COUNCIL ADVISOR.



JO ANN DI SARNO — PRESIDENT



DARLENE BROWN — TREASURER



FRANCA BRUNO — TREASURER



MARY ELLEN KLEHM — SECRETARY



(LEFT — RIGHT) MARY ELLEN KLEHM — SECRETARY, NANCY MOLINARO — SECRETARY, DEBBIE MALONE — VICE PRESIDENT, DARLENE BROWN — TREASURER, FRANCA BRUNO — TREASURER



DEBBIE MALONE — SECRETARY



NANCY MOLINARO — SECRETARY



MARY ELLEN KLEHM — SECRETARY, NANCY MOLINARO — SECRETARY, DEBBIE MALONE — VICE PRESIDENT, JO ANN D'SARNO — PRESIDENT, DARLENE BROWN — TREASURER, FRANCA BRUNO — TREASURER

BEAUTY CULTURE I



SAFETY

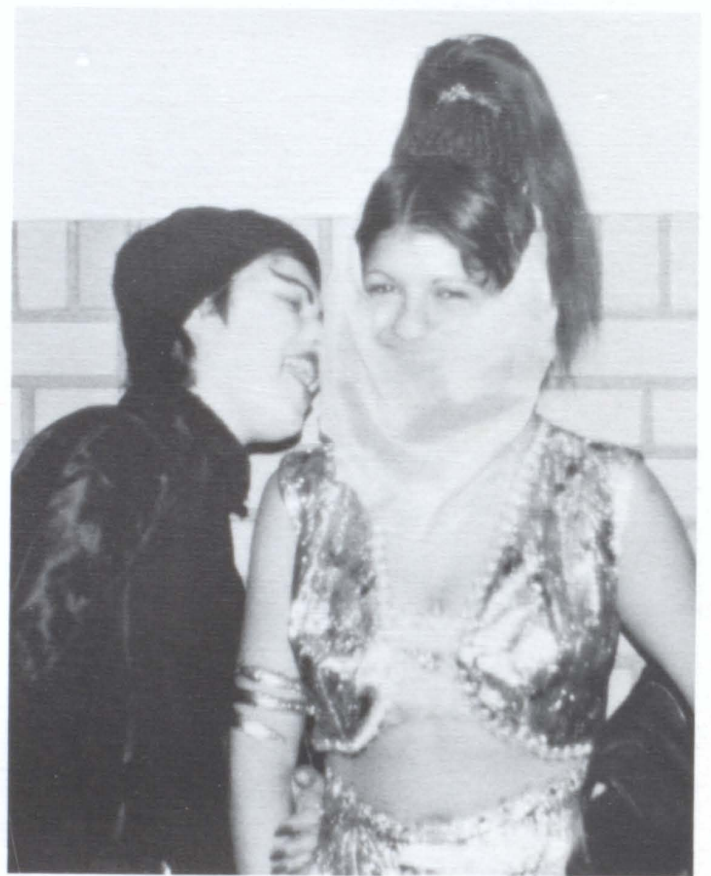


TOP ROW, M. GIESSINGER, J. CORDI, A. ELLISON, R. DARBEY, C. DARDEN, L. FARACE, R. BROWN, V. DARGAN, S. GIBBS, P. SAUCHELLI, L. ELEKES, P. DILL, M. DIXON, **MIDDLE ROW**, A. EXUM, C. SCALZI, J. DIAZ, K. ROBINS, S. WILLIAMS, J. NEGRI, M. DANIELS, L. DE CROCE, **BOTTOM ROW**, R. ROSA, D. DE LEVA, G. PEPE, S. CARLUCCI, V. DEL GUERCIO, D. SCHOMAKER, J. PARRIS, J. DISARNO, A. PINCKNEY.

RECREATION



J. PARRIS, A. STREETS, D. BROWN, M. MERCADO, M. RIVERS.

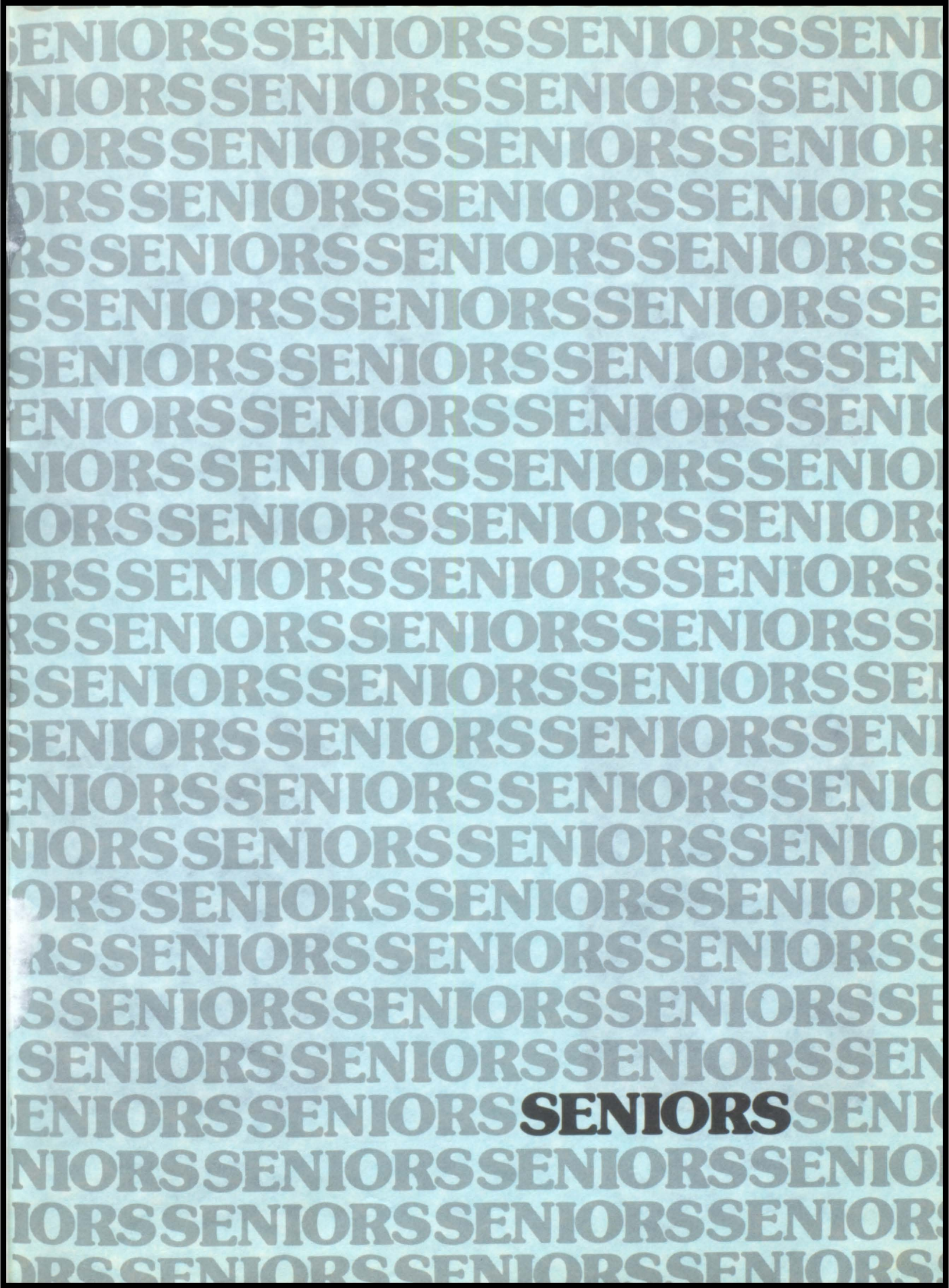


H
A
L
L
O
W
E
E
N



BUSINESS MACHINES I







LOUISE ACCOMANDO
"Lou"
BUSINESS MACHINES
Safety 1, 4, Bookworms 4



Uh Huh, Uh Huh.



MARIA ACEVEDO
"Shorty"
BEAUTY CULTURE



CRYSTAL MONIQUE ANDERSON
"Cris"
BUSINESS MACHINES
Student Council 1, 3, Bookworms
3, 4, Senior Class Officer
Secretary 4, Dance 3



When You Wish Upon A Star, Your Dreams Come True



CARMEN ANDRADE
"Blondie"
BEAUTY CULTURE



CAROL APOSTOL
"Caravelle"
COMMERCIAL ART
Yearbook, 3, 4, Student Council 3,
4, Publicity 4



ANGELA COLETTE BAILEY
"Angie"
DRESSMAKING
Safety 3, Cafeteria, 3, Yearbook,
3, 4, Fashion Show, 3, 4, Student
Council, 2, Bookworms, 3, 4,
Magazine, 1



SHEILA BATTISTE
"Margie"
DRESSMAKING
Safety 1, Glee Club 1, 2, Student
Council 3, Fashion Show 3



SHELLEY BATTLES
"Harpo"
COMMERCIAL ART



LORRAINE BENNETT
"Lorrie"
BEAUTY CULTURE





A Stitch In Time . . .



DOROTHY LAVERN BLAKELY
 "Dotty"
 DRESSMAKING
 Safety 3, Glee Club 2, 3, 4,
 Fashion Show 3, Student Council
 3



RACHEL BLAKEWOOD
 DRESSMAKING
 Ecology 1, Fashion Show 3, 4,
 Bookworms 3, 4, Dance 3



RHONDA LISA BROWN
 "Ronny"
 BEAUTY CULTURE
 Safety 3, 4, Cheerleaders 2, 3, 4,
 Glee Club 2, 3, 4, Student Council
 4, Dance Committee 2, 3, 4.



A One Of A Kind Hood Ornament.



VERNETTE BROWN
 "Vernie"
 BEAUTY CULTURE
 Safety 4, Recreation 3, 4



ANETTE MARIA BURO
 ""
 TECHNICAL SECRETARY
 Safety 1, 2, 3, Glee Club 1, 2, 3,
 4, Ecology 1, Student Council 1, 3,
 4



CHERYL CAPIZZI
 "Cher"
 COMMERCIAL ART
 Safety 1, 2, 3, 4, Student Council
 3, Yearbook 4, Track 3, Publicity
 4



ROCHELLE CARLUCCI
"Roe"
BUSINESS MACHINES
Safety 3, 4



Put That Curl Back In Place.



SHELLY A. CARLUCCI
BUSINESS MACHINES
Safety 1, 2, 3, 4



SHELIA CARRINGTON
"Tubby"
BEAUTY CULTURE



ROSEMARY CASALE
"Ro"
BEAUTY CULTURE
Safety 4



RENEE CERRETO
BEAUTY CULTURE
Safety 3, 4, Glee Club 1, 2,
Bookworms 2



LUZ MARIA CESARIO
"Luchi"
BUSINESS MACHINES
Fashion Show 3, Student Council
2, 3



ANN CETRULO
"Annie"
BUSINESS MACHINES
Safety 4, Bookworms 4



BARBARA ANN CETRULO
"Barb"
BUSINESS MACHINES
Safety 1, 3, 4, Yearbook 3, 4,
Student Council 4, Magazine
Committee 2, 3, 4, Bookworms 2,
3, 4



TONI CICALA
BEAUTY CULTURE
Safety 2, 3, 4



ANTOINETTE CICHINO
"Ant"
BUSINESS MACHINES
Safety 4



RENE COPELAND
"Na Na"
TECHNICAL SECRETARY
Cafeteria 3, Recreation 1, 2,
Yearbook 3, 4, Track 3, Dance
Committee 3



CONNIE CORDERO
"Brat"
BEAUTY CULTURE
Glee Club 1, 2, 3, Housekeeping
1, Student Council 4



CATHLEEN LORNA CROSSON
"Caf"
DRESSMAKING
Safety 3, Glee Club 3, 4, Fashion
Show 2, 3, Student Council 1,
Bookworms 4, Dance 3



CAROLYN CULVER
"Fliz"
TECHNICAL SECRETARY
Recreation 3, Track 3, Dance
Committee 3



We Two . . . We're All Alone.



CAREN ANITA DAIS
EMPLOYMENT ORIENTATION



VILYA JEAN DARGAN
"Vil"
BEAUTY CULTURE
Safety 4, Recreation 4, Dance
Committee 4



DIANE DE CROCE
"Di"
BEAUTY CULTURE
Safety 3, 4, Glee Club 1, 2



ANTONIA DELEVA
"Toni Girl"
BUSINESS MACHINES
Safety 2, Cafeteria 3



MARIA EUGENIA DELGADO
"Hey Delgado"
TECHNICAL SECRETARY



Papers! . . . Papers!



VICKI ANN DEL GUERCIO
"Vik"
BUSINESS MACHINES
Safety 4, Bookworms 3, 4, Dance
Committee 4, Yearbook 3, 4



PATRICIA ANN De PERRI
"Patty" (Boom-Boom)
TECHNICAL SECRETARY
Safety 1, Student Council 2, 3,
Bookworms 2, 3, 4



MIGDALIA DIEPPA
"Mickey"
BEAUTY CULTURE



MARGARET JOYCE DILL
"Peggy"
BEAUTY CULTURE
Safety 1, 2, 3, 4



Now lie back, close your eyes and relax.



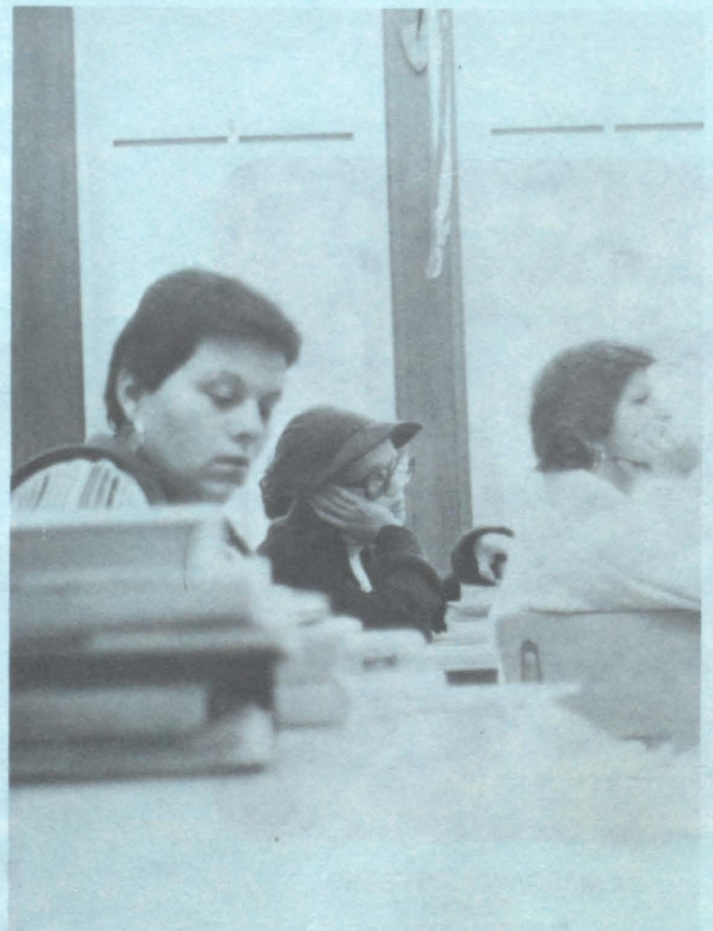
LORETTA DINKINS
"Lo-Ugly"
DRESSMAKING
Safety 2, Cafeteria 3, Ecology 1,
Fashion Show 2, 3, 4, Student
Council 4



JO ANN LINDA DISARNO
"Bubba"
BEAUTY CULTURE
Safety 1, 2, 3, 4, Publicity 4, Glee
Club 1, 2, 3, 4, Student Council 2,
3, Pres. 4, Bookworms 1, 2, 3, 4,
Dance Committee 2, 3, 4,
Yearbook 4

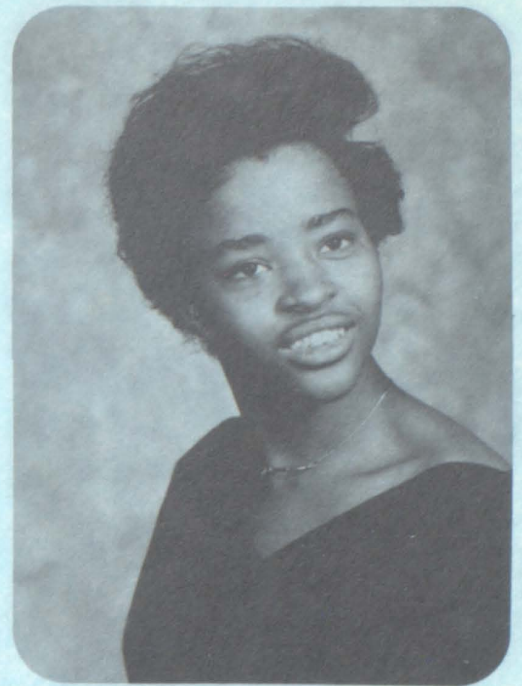


LINDA ANN ELEKES
"Magoo"
BEAUTY CULTURE
Safety 1, 2, 3, 4

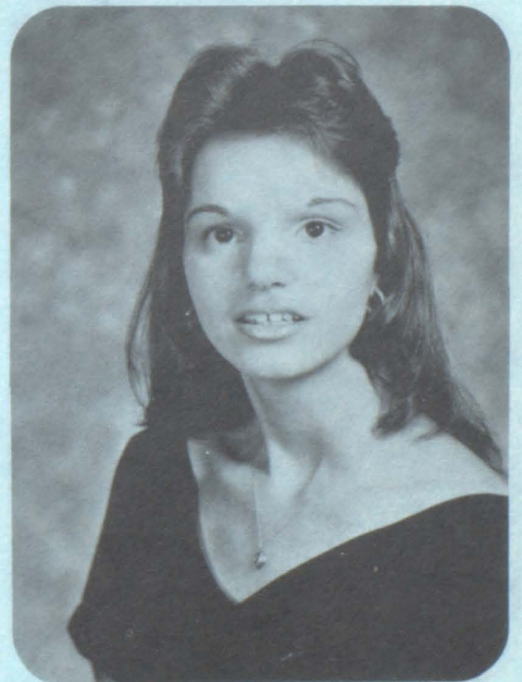
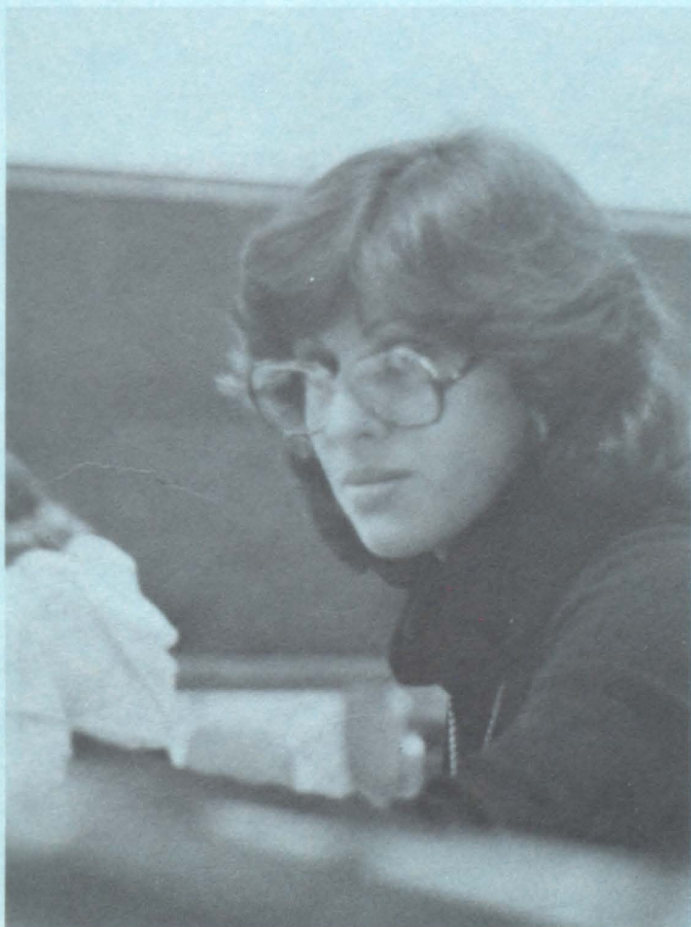




MARIA ELLIMO
"Ria"
BUSINESS MACHINES
Safety 1, 4, Newspaper 4



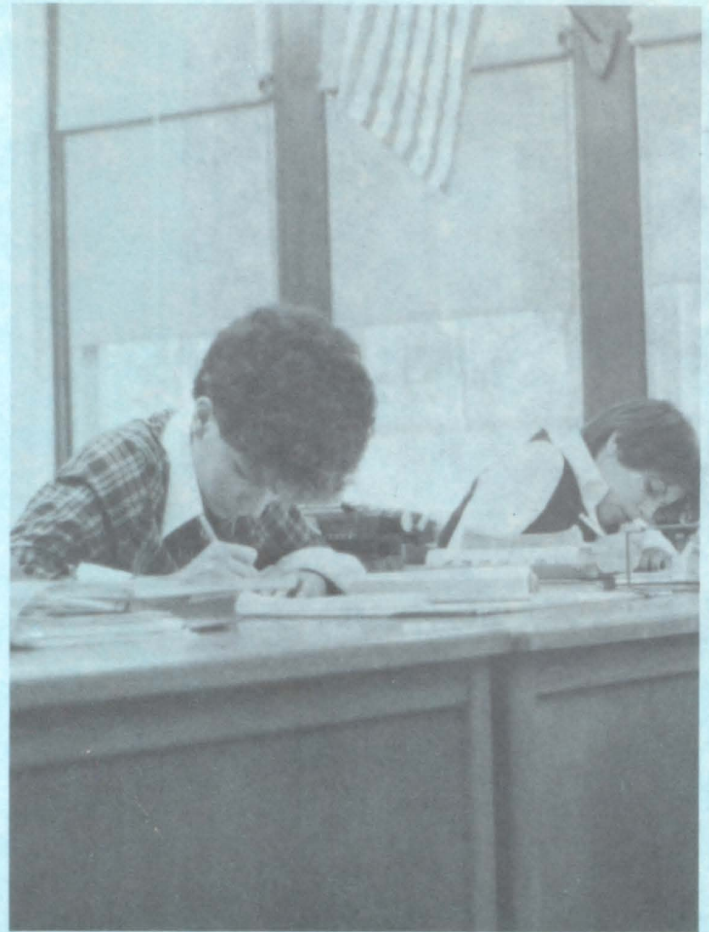
SHELIA LORRAINE EUNICE
DRESSMAKING



KIM FISCHETTA
"Kimmy"
BUSINESS MACHINES
Safety 3



GWENDOLYN FREEMAN
 "Gweny"
 TECHNICAL SECRETARY
 Safety 1, Cafeteria 3, Recreation
 3, Glee Club 1, 2, Yearbook 3, 4,
 Track 3, Student Council 1, 2,
 Fashion Show 3, 4, Dance
 Committee 3



WRITE . . . WRITE . . . WRITE . . . WRITE



RITA LYNN GALANTE
 "Re"
 TECHNICAL SECRETARY
 Safety 1, 2, Cafeteria 3,
 Bookworms 1, 2, 3, 4, Yearbook 4



LUCILLE GALIOTO
 "Lou"
 BUSINESS MACHINES
 Safety 2, 3, 4, Bookworms 1, 3, 4,
 Dance Committee 3, 4,
 Newspaper Committee 4



Cut . . . Cut . . . Cut



MARGARITA GARCIA
"Magie"
COMMERCIAL ART
Publicity 4, Glee Club 2, 4,
Yearbook 4, Track 3



SHEILA GIBBS
"Sheil"
BEAUTY CULTURE
Safety 4, Publicity 4, Fashion
Show 4



TERESA IDA GOLDMAN
"Terri"
TECHNICAL SECRETARY
Glee Club 1, 2, 3, 4



EVELYN GONZALEZ
"Evy"
BUSINESS MACHINES
Cafeteria 2, 4, Recreation 1, 3,
Student Council 1, 2, 3,
Bookworms 1, 2, 3



SHARON GROSSO
"Dizzy"
BEAUTY CULTURE
Bookworms 1, Safety 4



CARMEN HARRIS
"Carm"
COMMERCIAL ART
Safety 2, Publicity 4, Glee Club 2,
4, Yearbook 3, 4, Student Council
2, Track 3



Can't we take a break today . . . I'm tired.



A Women's Work Is Never Done.



DIANE HARVEY
"Toya"
FOOD SERVICE



LISA HEWLETT
"Lee"
DRESSMAKING
Safety 1, Cafeteria 2, 3, Fashion
Show 2, 3, 4, Student Council 3,
Bookworms 4



ROSEMARY HICKS
BUSINESS MACHINES



Rockabye and Goodnight . . .



BRENDA J. HILL
"Tinkie"
BUSINESS MACHINES
Cafeteria 3, 4, Recreation 2, 4,
Glee Club 1, 2, Bookworms 3, 4,
Dance Committee 3



NADINE HOWARD
"Ant"
COMMERCIAL ART
Glee Club 1, Yearbook 4, Fashion
Show 3



MARIA IANNUZZELLI
TECHNICAL SECRETARY
Safety 3, Cafeteria 2



ALMA JEAN JACKSON
"Hamburger"
DRESSMAKING
Safety 2, Cheerleaders 2, Glee
Club 2, Fashion Show 2, 3, 4



CHRISTINE MARIE KILCOYNE
"Crissi"
BEAUTY CULTURE
Safety 2, 3, Yearbook 4, Ecology
1, 2, Housekeeping 1, Student
Council 1, 2, 3, Bookworms 1, 2,
3, 4, Dance Committee 2



ROSE ANGELINA GRACE
LAMOLA
"Gomboda"
FOOD SERVICE
Yearbook 3, 4, Ecology 1,
Bookworms 1, 2, 3, 4



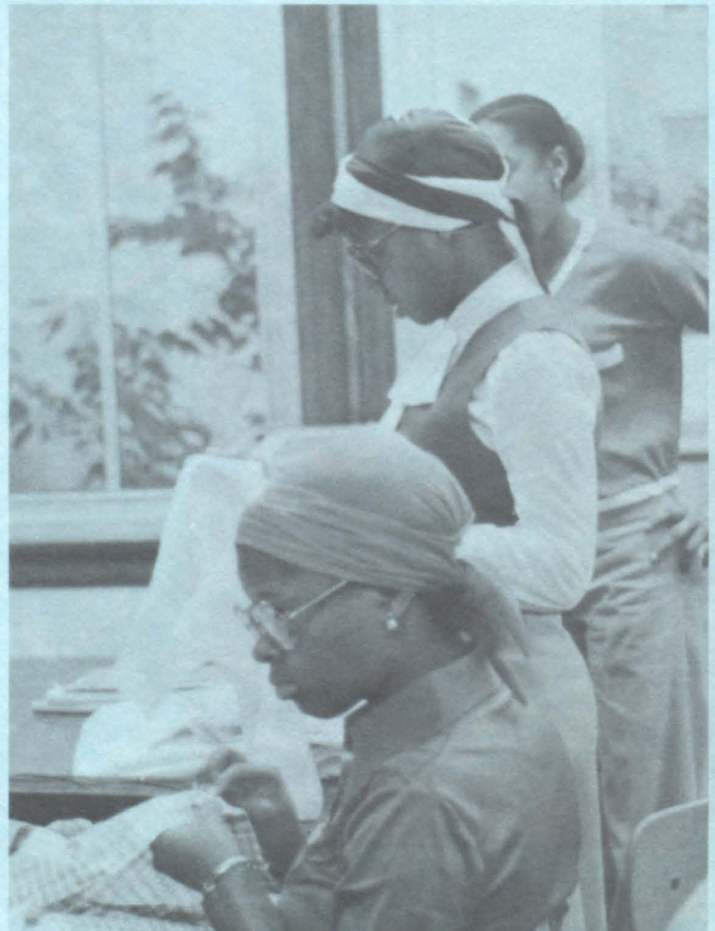
MINNIE LEE
DRESSMAKING
Fashion Show 3, 4, Magazine
Committee 2



SANDRA LEWIS
"San"
DRESSMAKING
Fashion Show 2, 3, 4, Bookworms 4

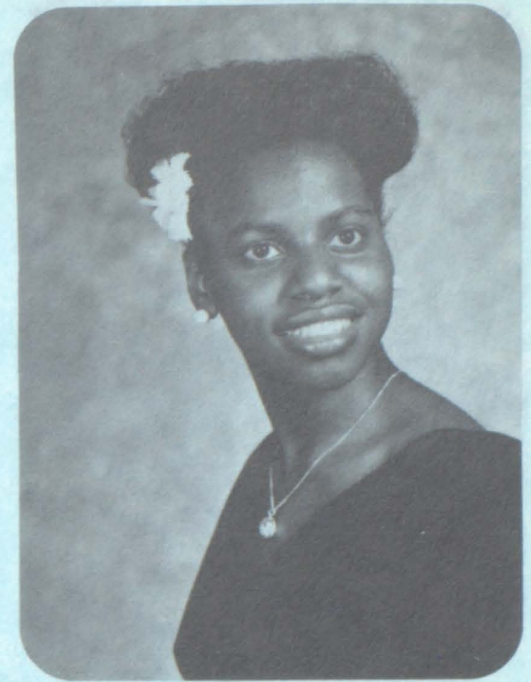


JOYCE LOMBARDINI
"Horse"
TECHNICAL SECRETARY
Glee Club 2, 3, 4, Bookworms 1,
2, 3, 4





VILMA LOPEZ DE VICTORIA
"China"
BEAUTY CULTURE
Glee Club 1, 2, Student Council 3,
Bookworms 1



JOYLYN LOTT
"Joy"
BUSINESS MACHINES
Recreation 3, 4, Cheerleaders 1,
4, Glee Club 1, 2, Student Council
1, 2, 3, 4, Bookworms 1, 2, Dance
Committee 3, Senior Class Officer
Vice President



JOSEPHINE LUZZI
"Jo"
BUSINESS MACHINES
Yearbook 3, 4, Ecology 1, 2,
Housekeeping 1, 2, Bookworms
1, 2, 3, 4, Magazine Committee 2,
3, 4



NOELEEN ANN LYNCH
"Simon Socket"
BEAUTY CULTURE



DEBRA ANN MALONE
"Deb"
DRESSMAKING
Cafeteria 3, Yearbook 3, Fashion
Show 3, Student Council 3, 4,
Bookworms 4



MICHELE MARAVIGLIA
"Cher"
TECHNICAL SECRETARY
Safety 3



ANDREA MARIE MARINELLI
"Ann"
TECHNICAL SECRETARY
Bookworms 3, 4



JOANNE MARIE MARKOWITZ
"Jo" "Blondie"
TECHNICAL SECRETARY
Safety 3, Bookworms 1, 2, 3, 4,
Student Council 2



CARMEN MARGARITA MARTINEZ
"Mia"
BUSINESS MACHINES



LUZ MARIA MARTINEZ
"Maria"
BUSINESS MACHINES
Safety 2



MELVINA THERESA MARTINEZ
"Tessie"
FOOD SERVICE
Safety 2



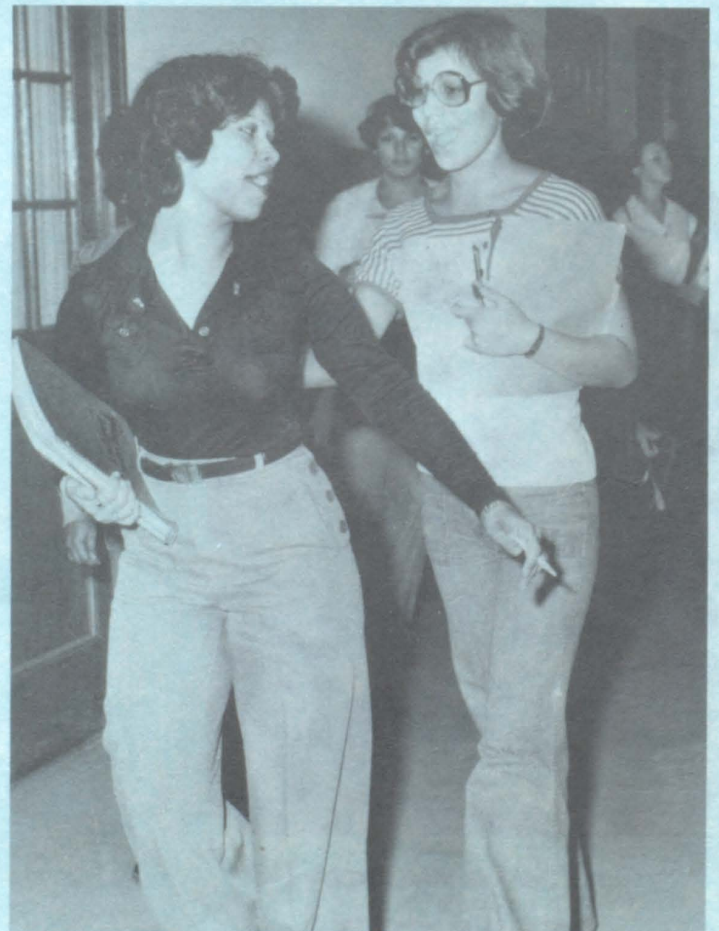
ROSE MARIE MAIORANO
"Romeo"
FOOD SERVICE



PATRICIA EASTER MATTHEWS
"Professor"
BUSINESS MACHINES
Safety 2, Cafeteria 3



CHERYL McCRAY
"Grandma"
DRESSMAKING
Cafeteria 3, Fashion Show 2, 3



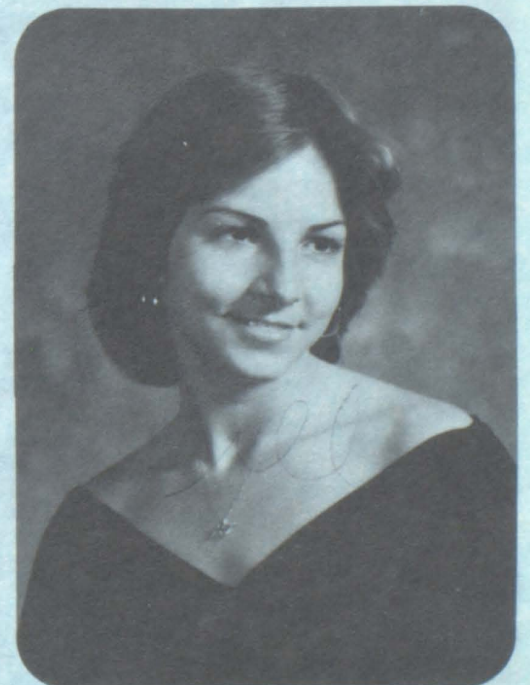
Keep on Trucking



CARLA ANN MELILLO
"Car"
TECHNICAL SECRETARY
Safety 1, 2, Cafeteria 3, Student
Council 3, Bookworms 1, 2, 3, 4,
Dance Committee 3



ETTA DELORES MOBLEY
DRESSMAKING
Safety 3, Ecology 1, Fashion Show 1,
Magazine 1, 2, 3



DIANE MOLINARO
"Dee"
TECHNICAL SECRETARY
Safety 1, 2 Cafeteria 3, Student
Council 3, Bookworms 1



ANTOINETTE FRANCES MONTAGUE
 "Annie — The Kid"
 TECHNICAL SECRETARY
 Glee Club 1, 2, 3, 4, Yearbook 3,
 4, Ecology 1, 2, Bookworms 1, 2,
 3, 4



SHARON LEVERN JENNIFER
 MONTGOMERY
 "Sun"
 BEAUTY CULTURE
 Safety 2, 3, Student Council 2



Me and my top hat . . .



JUDY NEGRI
 "Ju"
 BEAUTY CULTURE
 Safety 1, 2, 3, Student Council 1



ANITA ANGELENE NEWKIRK
"Nita"
BUSINESS MACHINES
Cafeteria 2, Recreation 4, Glee
Club 1, 2, Ecology 1, Bookworms
2, Dance Committee 3



The joint.



NANCY NIEVES
"Nans"
DRESSMAKING
Fashion Show 3



MARILYN NORTH
"Ann"
DRESSMAKING
Student Council 1





EVELYN OROZCO
"Flaca"
BEAUTY CULTURE
Recreation 2, 3, Glee Club 1, 2, 3,
Yearbook 3, Dance Committee 2



ANNA OLGA ORTIZ
"Annie"
TECHNICAL SECRETARY
Safety 3, Yearbook 3, 4



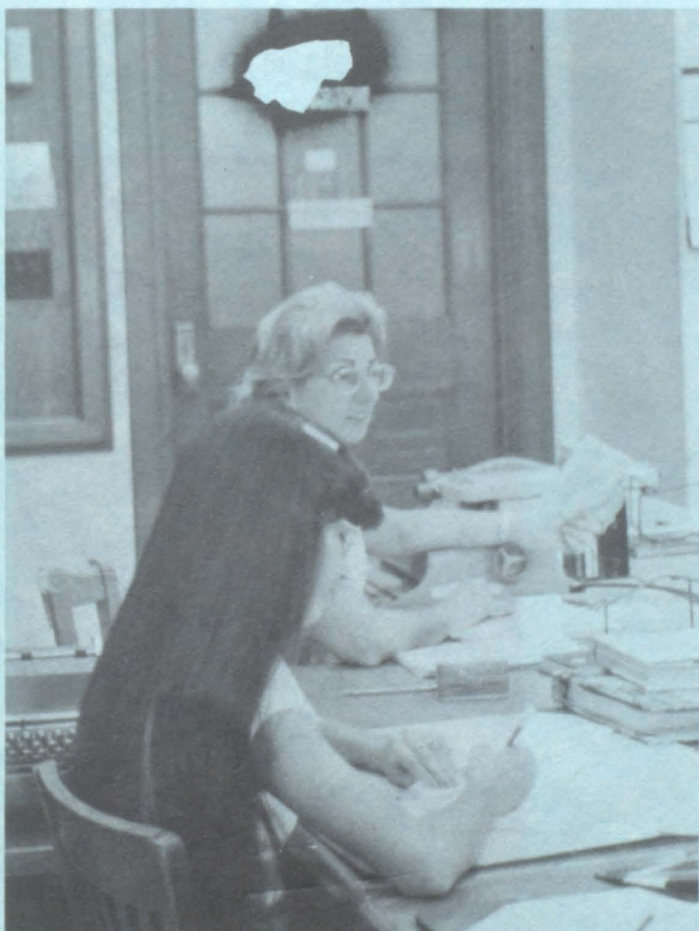
EVANGELITA ORTIZ
"Eva"
BUSINESS MACHINES
Cafeteria 1, Glee Club 1, 2, Ecolo-
gy 1, Bookworms 1, 2, 3, 4



ROSEMARIE OTERO
"Rosa"
BUSINESS MACHINES
Recreation 2



ANNA PAGAN
"Anita"
TECHNICAL SECRETARY
Glee Club 1, 2, 3, 4, Yearbook 3,
4, Bookworms 1, 2, 3, 4



See . . . I'm Working.



EMILY PALLANTE
BUSINESS MACHINES
Safety 2, 4, Cafeteria 3,
Recreation 4



BARBARA A. PARKER
 "Bobbie"
 DRESSMAKING
 Ecology 1, Fashion Show 3,
 Magazine Committee 1, 2, 3,
 Dance Committee 3



I Find It Hard To Believe . . . Don't You?



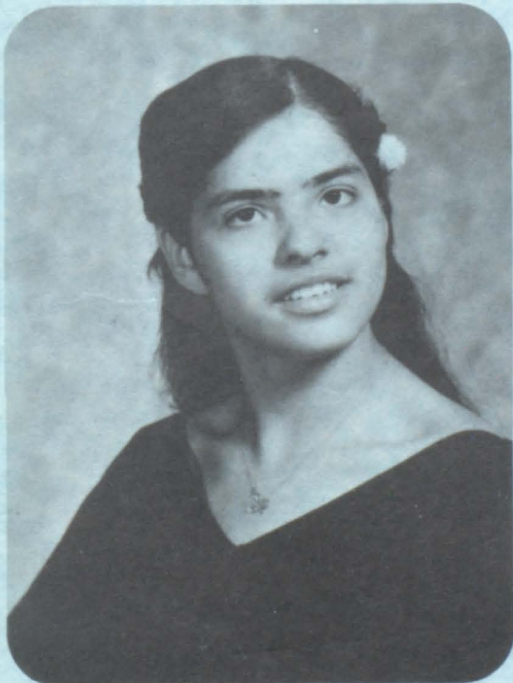
JANET PARRIS
 "Janet"
 BUSINESS MACHINES
 Housekeeping 1, 2, Bookworms
 2, 3, Dance Committee 3



JO ANN PENNA
 "Joe"
 BEAUTY CULTURE
 Housekeeping 1



GAIL PEPE
BUSINESS MACHINES
Safety 1, 2, 3, Senior Class Officer
Pres. 4



NANCY PEREZ
"Donny"
COMMERCIAL ART
Glee Club 2, Yearbook 4



KATHY PHALEN
"Kat"
BUSINESS MACHINES
Glee Club 1, 2



TONYA PHILLIPS
"Fawn"
BEAUTY CULTURE
Fashion Show 3



ARLENE PINCKNEY
"Teeney"
BUSINESS MACHINES
Cheerleaders 2, Glee Club 1, 2,
Ecology 1, 2 Housekeeping 2, 3
Bookworms 1, 2 Dance Commit-
tee 3



GAIL POETA
"Po-ta"
BUSINESS MACHINES
Student Council 2



I'd rather do it myself.



KATHY ROBBINS
"Curly"
BEAUTY CULTURE
Safety 4, Bookworms 1



DIANNA E. ROBINSON
"Coffee Bean"
BEAUTY CULTURE
Safety 3



Ow! Be careful, thats my finger.



ILEANA REINOSO
"Ily"
BUSINESS MACHINES
Recreation 1, 2



DIANA M. RIVERA
"Dida"
DRESSMAKING
Recreation 1, Fashion Show 3,
Bookworms 2, 3, 4



GLORIA JEAN ROGERS
BEAUTY CULTURE
Cafeteria 2, 3 Recreation 1
Cheerleaders 1, 2, 3 Ecology 1, 2
Fashion Show 3



CARMEN EVETTE RODRIGUEZ
"Midget"
TECHNICAL SECRETARY
Safety 3 Recreation 1, 2 Student
Council 3 Bookworms 1



A womens work is never done.



NORMA RODRIGUEZ
BUSINESS MACHINES
Recreation 1, 2 Student Council 1



ANA ROSARIO
"Banana"
BEAUTY CULTURE
Recreation 3



Its not nice to fool with Mother Nature.



JOSEPHINE THERESA
SALVATORIELLO
"Finny"
BUSINESS MACHINES
Safety 2, 3, 4 Bookworms 2, 4
Newspaper 4



SHARRON DENISE SANDERS
"Sha-Sha"
BEAUTY CULTURE
Cheerleaders 2, 3 Glee Club 1, 3,
4 Student Council 1, 3, 4 Book-
worms 3 Dance Committee 2, 3,
4



PAM SAUCHELLI
"Crazy Pam"
BEAUTY CULTURE



KAREN SAVAGE
"K. K."
BUSINESS MACHINES
Housekeeping 2 Bookworms 4





JOANNE SAVI
"Speedy"
BUSINESS MACHINES
Bookworms 1, 2



JANICE ANNE SCARDAVILLA
"Jan"
BUSINESS MACHINES
Safety 3 Bookworms 1, 2, 3



Am I Glad Today's Over.



CARMELA SCALZI
"Mela"
BEAUTY CULTURE
Safety 1, 2, 4 Student Council 1



CHRISTINA ANN SCHAIBLE
"Christy"
BUSINESS MACHINES
Bookworms 1, 2, 3, 4



DONNA SCHOMAKER
"Bugs"
DRESSMAKING



SONIA M. SERRANO
"Sony"
TECHNICAL SECRETARY
Safety 3 Ecology 1



SHARON RENEE SPRUILL
"Apple"
DRESSMAKING
Glee Club 1 Fashion Show 3, 4
Bookworms 4 Magazine Committee 1



ATHENA STROUBLE
"Frosty"
COMMERCIAL ART
Safety 4 Cafeteria 2, 3 Cheerlead-
ers 2 Glee Club 1 Ecology 1 Book-
worms 2, 3 Fashion Show 3, 4
Yearbook 3, 4



KATHLEEN TAGGART
"Pupi"
FOOD SERVICE
Safety 2



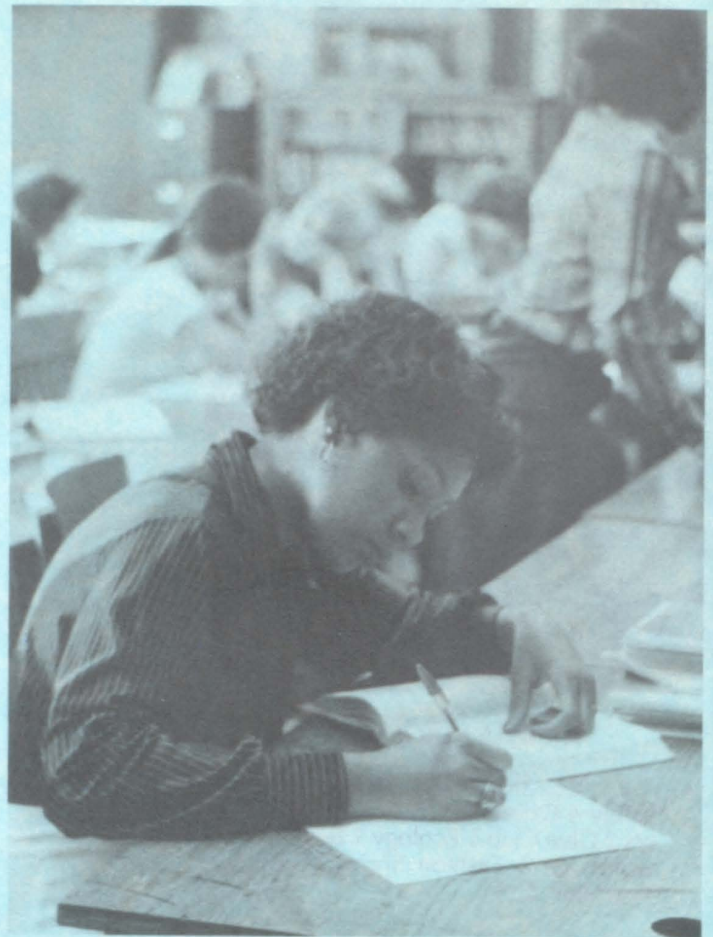
CASSANDRA LA,TRESSA TANNER
"Pumpkin"
BUSINESS MACHINES
Safety 2, 3 Cafeteria 2



HELEN JOANN TENORE
BUSINESS MACHINES
Safety 2, 3 Cafeteria 4 Yearbook 4
Student Council 3



REGINA ANN TIMMONS
"Gina"
TECHNICAL SECRETARY
Safety 2 Cafeteria 3 Glee Club 1,
2, 3, 4 Recreation 3 Yearbook 4
Student Council 1, 4 Bookworms
1, 2, 3, 4 Dance Committee 3



Everyone's finished but me



DOLORES TROUBLEFIELD
"Dee-Dee"
FOOD SERVICE
Safety 2 Bookworms 2, 3



AURORA MARINA VALDES
"DAWN"
"Typical"
BEAUTY CULTURE
Safety 2, 3 Yearbook 4 Ecology 1
Bookworms 2, 3, 4



Now Hear This . . .



GRACE VIOLA
 BUSINESS MACHINES
 Safety 1, 2, 4 Glee Club 1
 Yearbook 3, 4



ANITA C. WHITEHURST
 "Chicken"
 FOOD SERVICE
 Safety 2 Glee Club 1 Ecology 1
 Student Council 2, 3, 4
 Bookworms 1, 2, 3, 4 Dance
 Committee 3 Track Team 3



STEPHNE D. WILLIAMS
 "Steff"
 BUSINESS MACHINES
 Safety 1, 2, 4 Glee Club 1 Dance
 Committee 3



MARION WILSON
"Merm the Squirm"
DRESSMAKING
Fashion Show 3, 4, Magazine
Committee 1, 2



LENORE YARRELL
FOOD SERVICE



CANDY, CANDY, GET YOUR CANDY



OH YEAH . . . I HAVE IT THIS TIME

COMMERCIAL ART



MOST RELAXED



ANITA NEWKIRK



JOYCE LOMBARDINI

MOST BUBBLY



ANETTE BURO

CLASS GIGGLER



JOYLYN LOTT

CLASS CHATTERBOXES



KATHY PHALEN



EVELYN GONZALEZ

MOST ATTRACTIVE



SHELLY CARLUCCI

MOST POPULAR



GAIL PEPE

BEST DRESSED



LISA HEWLETT

BEST DANCER



JOYLYN LOTT

CLASS KNOW IT ALL



ANTOINETTE MONTAGUE

MOST ATHLETIC



SHIELA CARRINGTON

TEACHERS TERROR



ARLENE PINCKNEY

TECHNICAL SECRETARY



PUBLICITY



CAROL APOSTOL, CHERYL CAPIZZI, ATHENA STROUBLE, CARMEN HARRIS, MARGARITA GARCIA, SHELLEY BATTLES, NADINE HOWARD.

BOOKWORMS



ANNA PAGAN, JOYCE LOMBARDINI, SHEILA HOBSON, JANICE MAYO, REGINA JACKSON, ANGEL WILCOX, MISS LEHMAN, TERESA MELILLO, MARIA BRASINGTON, LUZ DIEPPA, CAROLYN DARDEN, ANDREA MARINELLI, TERESA GOLDMAN.

MOST LIKELY



CAROL APOSTOL
COMMERCIAL ART



PEGGY DILL
BEAUTY CULTURE II

DIANA ROBINSON
BEAUTY CULTURE I



THERESA GOLDMAN
TECHNICAL SECRETARY



TO SUCCEED



CASSANDRA TANNER
BUSINESS MACHINES II



DELORES TROUBLEFIELD
FOOD SERVICE

VICKI DELGUERCIO
BUSINESS MACHINES I



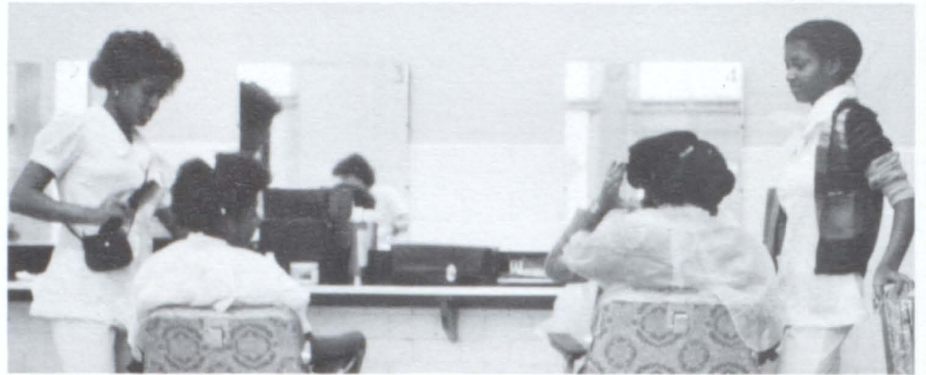
MINNIE LEE
DRESSMAKING



B
E
A
U
T
Y

C
U
L
T
U
R
E

2





ALBANESE A.
AVENT L.
BENNETT J.
BENNETT M.

BERARDI D.
BERRY D.
BLANCHARD J.
BLOUNT V.

BRANDON T.
BROWN V.
BURWELL J.
BUTLER C.

CAROL J.
CARNEGIE R.
CASTELLANO P.
COGGINS D.

COLON M.
COLQUIT W.
CURRY D.
D'ARCIO J.



DE JESUS M.
De LUCA J.
DIAZ M.
DIEPPA M.
DIGREGORIO M.





DI SANTO D.
DI FLUMERI J.
DOMINICI K.
DUNCAN D.
EDWARDS L.
ELLISON A.

FARESE L.
FELICIANO M.
FLEMING B.
GABRIEL D.

GALLMAN R.
GARCIA M.
GEISSINGER M.
GESARIO J.

GONZALEZ L.
GREENLEE J.
HAMPTON R.
HARDY D.

HARRELL A.
HARRIS R.
HARVEY A.
HAYES L.

IRIZARRY N.
JACKSON A.
JONES M.
KLEHM M.
KOBENSIE L.
KORNUTA J.



MERCADO M.
MOLINARO N.
MONTEFUSCO M.
MONTES DE OCA

MUHAW C.
MURPHY H.
NEWMAN L.
NIEVES E.

NISIVOCCIA T.
ORME L.
ORT K.
OSMUN R.



KOWALONEK P.
LEE G.
LEE L.
LIQUORI J.
LOWERY V.
MAISONAVE E.

MAISONAVE I.
MALANGA D.
MANZO P.
MARTINEZ D.
MARTINEZ S.
MASSUCCI D.

MAYO J.
McGEE L.
McIVER J.
McRAE C.
MEJAS M.
MENDEZ M.





PACHECO D.
PALMA S.
PARKER B.
PATTERSON P.

PEREZ M.
PERRY J.
PETRACCA J.
PHILLIPS R.

PICILLO S.
POZZOLI A.
PURKETT J.
QUINERLY A.



RAMOS N.
RANDOLPH R.
RODRIGUEZ I.
ROSADO D.
ROZIER A.
SABATINO C.

SALGADO E.
SANTIAGO E.
SANTOS J.
SCHAAL T.
SIMEONE J.
SIMS A.

SIMMONS M.
SMITH C.
SPARKS R.
SPINO K.
STREETE A.





STELMACH, B.
SVEHLA, M.
TAYLOR, M.

THORNTON, C.
THORNTON, V.
TIPPETT, R.

VALDES, C.
VALLERY, A.
VAZQUEZ, M.

VELLA, A.
VENABLE, R.
VERZE, D.

WHITE, C.
WILBURN, G.
WILCOX, A.

WILLIAMS, D.
WILLIAMS, L.
ZACCONE, D.



RESSOPHMORESSOPHMORESS
ESSOPHMORESSOPHMORESS
SSOPHMORESSOPHMORESSO
SOPHMORESSOPHMORESSOPH
OPHMORESSOPHMORESSOPHM
PHMORESSOPHMORESSOPHM
HMORESSOPHMORESSOPHMOR
MORESSOPHMORESSOPHMOR
RESSOPHMORESSOPHMORES
RESSOPHMORESSOPHMORES
ESSOPHMORESSOPHMORES
SOPHMORESSOPHMORES
OPHMORESSOPHMORESSOPH
PHMORESSOPHMORESSOPHM
HMORESSOPHMORESSOPHMOR
MORESSOPHMORESSOPHMOR
RESSOPHMORESSOPHMORES
ESSOPHMORESSOPHMORES
SSOPHMORESSOPHMORES
SOPHMORESSOPHMORES SOPHMORESSOPHMORESSOPHMORESSOPHM
OPHMORESSOPHMORESSOPHM
PHMORESSOPHMORESSOPHM
HMORESSOPHMORESSOPHMOR
MORESSOPHMORESSOPHMOR



ALVEREZ, M.
 ANDRADE, L.
 ANDREW, J.
 ANGELO, V.
 ARMSTRONG, S.



BAILE, T.
 BANKS, M.
 BARONE, L.
 BAXTER, V.
 BAZEMORE, T.



BELTON, J.
 BENNETT, M.
 BING, D.
 BOOKER, S.
 BRANA, C.



BRANA L.
 BROOKS, S.
 BROWN, R.
 BROXTON, T.
 BUGG, A.



HOBSON, S.
HOLLOWAY, S.
HOLMES, C.
HUNT, A.



HUTCHESON, D.
FANEITTY, S.
JASEMBERRY, G.
INNEO, B.
IRIZARRY, E.



JACKSON, D.
JONES, M.
KERR, S.
LANZA, P.
JORDAN, M.



LEE, K.
LEVERETT, J.
LAWRENCE, L.
LOYD, T.
LORENZO, N.



MERCADO, R

MENDEZ, M

MICKEL, L

MILLER, E



MASYCCI, Y
LITTENIO, J
MACKIE, T
MARTIN, T
McPARTLAND, R
MECCA, R

MILLER, D
MITCHELL, B
MONTANEZ, K
MONTALBANO, F
MONIZ, M
MOORE, A



MOORE, B.
MOORE, T.
MOSKOWSKI, J.
MUCCIA, M.
McCANN, R.



MYERS, D.
NITTOLI, P.
NUNNALLY, D.
DAVIS, T.
PAUL, E.



PETROCELLI, D.
PICKETT, E.
ALFIERI, D.
PUCILLO, M.
OLIVER, V.



ORBE, F.
PATUTO, L.
PEREZ, G.
PERGOLINO, R.
PERRY, G.



PETRONE, M.
PRAYLOW B.
PURKETT, N.





RIVERA, M
 REVOSO, M
 RAGLAND, C
 LIASHEK, R

RIOS, M
 ROBLES, M
 RODRIQUEZ, M
 RODRIQUEZ, R

ROSA, R
 ROSAMILIA, A
 STEINBRICK, C
 STEWART, L

SERRA, R
 SWEAT, S
 SAPIENZA, M
 SHARO, S

SHELIA, C
 SPRUILLI, J
 SUAREZ, S
 SULLIVAN, M

SPEARMAN, B
 SZASZ, F
 SANTOS, N
 THOMAS, H





TITONE, J
 TORSELLO, J
 TRAVERS, D
 TREMARI, L
 TAVARAS, M



TELESE, J
 TORBES, M
 VANDERGRIFT, B
 VELEZ, M
 VASQUEZ, N



WALKER, D
 WALKY, N
 WALSH, C
 WHITFIELD, K
 WILLIAMS, C



WILLIAMS, J
 WILLIAMS, N
 WILLIAMS, Y
 WIMBERLEY, S





BYRNE, T.
COLON, M.
EDWARDS, Y.
FAULKNER, T.
GODFREY, K.
FOSTER, P.

CAPACCIONE, A.
CORNWALL, A.
DEROGATIS, D.
EUNICE, S.
GILFONE, D.
GRIFFIN, L.

GOODE, B.
CAMPOS, L.
D'AMICO, K.
DIAZ, J.
EROSA, A.
FREDO, C.

CAPASSO, C.
DANIELS, M.
DIXON, M.
EVANS, R.
GUERRIERO, R.
HENWOOD, E.

CERAULO, L.
DAVIS, D.
D'TOMMASE, L.
FALCO, M.
GARCIA, L.
HAWTHORNE, L.

CICCINO, A.
DeLEVA, D.
DUPRE, D.
FANIEL, Y.
GASPARINETTE, J.
HERNANDEZ, N.



ACUNA, V.
ACEVEDO, A.
ALLEN, M.

ALONZA, M.
ANDREWS, S.
ANTONNI, T.

AROCHO, Y.
ASH, V.
AVENT, C.

AVENT, S.
BAERGA, A.
BAEZ, E.

BAILEY, T.
BAKER, N.
BALLESTER, M.

BANGERT, D.
BASILONE, D.
BEY, T.





BIURRA, M.
BLOUNT, M.
BRACK, S.

BRASINATON, P.
BROWN, A.
BROWN, D.

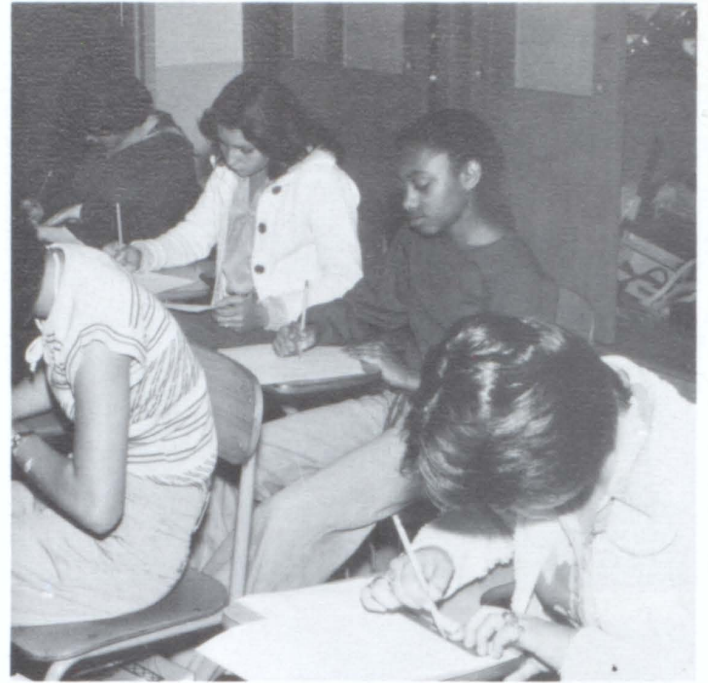
BROWN, D.
BROWN, L.
BROWN, V.

BRUAN, M.
BRYANT, G.
BURTON, B.

BUSH, P.
BUTLER, C.
CAQUIAS, P.

CARR, Z.
CALDERONE, N.
CAPACCHIONE, L.





CAMPBELL, K.
CANNING, S.
CARDOSO, N.
CARTER, S.
CARUSO, L.



CASALE, G.
CICCHINO, M.
CICCONI, B.
COLLAZO, M.
COLON, M.



CORNELL, B.
D'AGOSTE, A.M.
DARBY, R.
D'ARCIO, D.
DAY, Z



DE CICCO, L.
DELVECCHIO, A.
DI DOMENICO, C.
DI CESARIS, A.
DELMAR, M.



FAIOLA G.
FELICIANO, C.
FELICIANO M.
FIELD L.
FLEMMING C



FLORES E.
FLORES F.
FOSTER L.
FUENTES Y.
GAITO B.



GASPARINETTI L.
GELABERT H.
GOMES C.
GONZALEZ A.
GORNELLI V.



GRECO D.
GREEN D.
HOLDEN R.
HOLLER C.
HUBER J.



HUNTER, P.
 HUZINSKI, N.
 JACKSON, C.
 JOHANSON, M.
 JONES, L.



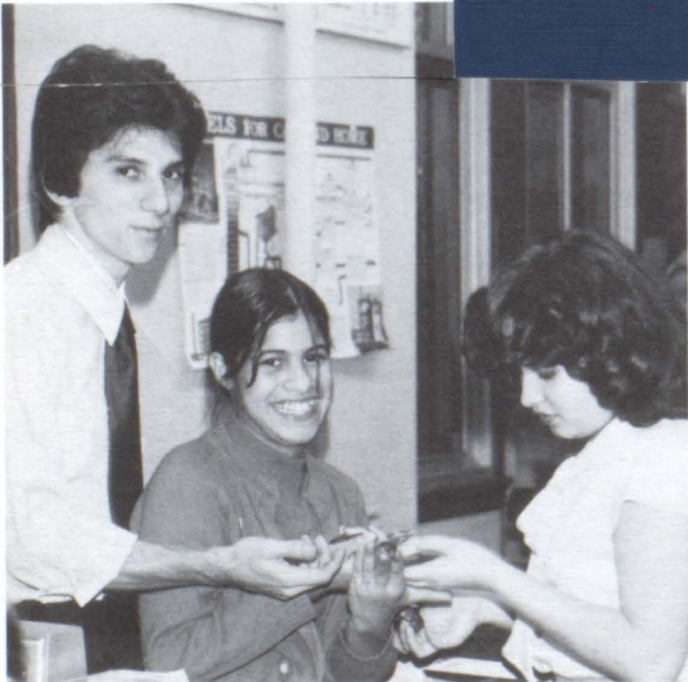
KNIGHT, F.
 LA MARCA, L.
 LAUGOIS, Y.
 LAWRENCE, D.
 LIASHEK, K.



LISOWSKI, K.
 LOPEZ, S.
 LUGO, E.
 MADISON, L.
 MAIORANO, M.



MANFREDI, A.
 MANKEY, M.
 MARINELLO, R.
 MARTIN, L.
 MARTINEZ, N.





MARTINEZ, O.
MASI, A.
McRAE, J.
MIRANDA, L.
MOLINARO, L.



MORALES, L.
MUSTICA, A.
NARDONE, C.
NIEVES, C.
NIEVES, D.



NIXON, N.
NOLAN, R.
ORLA, M.
ORTIZ, M.
PACHECO, A.



PADILLA, T.
PAIGE, W.
PAON, S.
PARRO, D.
PEREZ, R.





PERRI, G.
PERRONE, F.
PHILLIPS, W.
PIZZUTTI, D.
PLAZA, M.



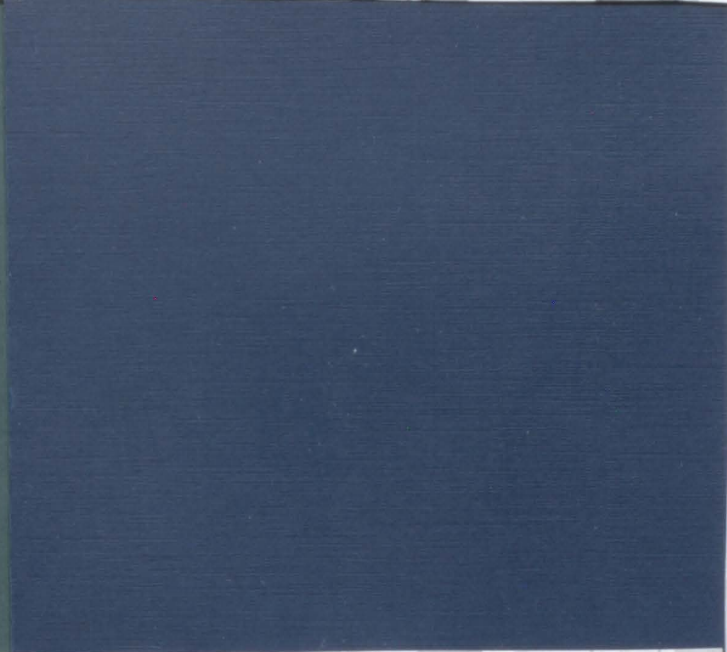
POWELL, D.
PRICE, M.
QUILÉS, D.
RAFFAELA, S.
RAMOS, M.



RAXFORD, S.
RESTAINO, F.
RUSTIN, S.
RIOS, F.
RICHARDSON, L.



ROCCO, A.
ROCCO, R.
RODRIGUEZ, H.
RODRIGUEZ, M.
ROMERO, L.



RYAN, T.
SABB, G.
SALEM, T.
SALGADO, R.
SALVATORIELLO, E.



SALVATORIELLO, B.
SANTORO, Y. M.
SANTOS, M.
SAPIENZA, L.
SAVI, C.



SCOTT, A.
SEJUELA, Y.
SERPO, M.
SHORTER, P.
SINCLAIR, T.



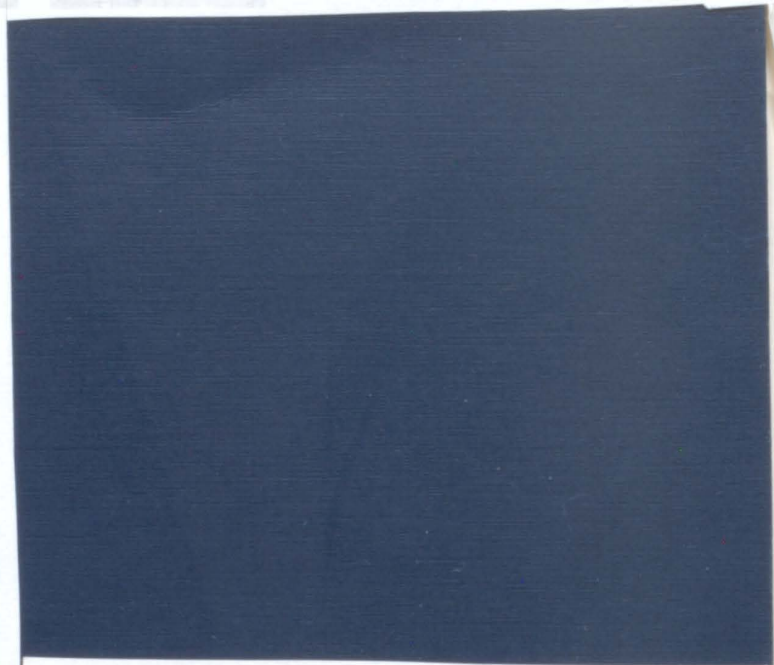
SOTO, I.
SUAREX, M.
SYKES, S.
TAYLOR, A.
TAFURI, A.



TYSON, R.
VAUGHAN, W.
VELAZQUEZ, E.
VERNIEVO, L.



WAINEN, P.
WALTON, C.



SADULTSADULTSADULTSADULTS
ADULTSADULTSADULTSADULTS
DULTSADULTSADULTSADULTS
ULTSADULTSADULTSADULTSAD
TSADULTSADULTSADULTSADU
SADULTSADULTSADULTSADUL
ADULTSADULTSADULTSADULTS
DULTSADULTSADULTSADULTS
ULTSADULTSADULTSADULTSAD
LTSADULTSADULTSADULTSADU
SADULTSADULTSADULTSADUL
ADULTSADULTSADULTSADULTS
DULTSADULTSADULTSADULTS
ULTSADULTSADULTSADULTSAD
LTSADULTSADULTSADULTSADU
TSADULTSADULTSADULTSADU
SADULTSADULTSADULTSADULT
DULTSADULTSADULTSADULTS
DULTSADULTS**ADULTS**ADULTS
LTSADULTSADULTSADULTSAD
TSADULTSADULTSADULTSADU
SADULTSADULTSADULTSADULT
ADULTSADULTSADULTSADULTS
DULTSADULTSADULTSADULTS

PRACTICAL NURSING



SATTERFIELD, D.



Row 1 PARTERSON, E., JOHNSON, A., LONG, E., RICHARDSON, D. **Row 2** PERSON, A., MALLORD, D., RABUTS, S., WASHINGTON, R. **Row 3** WILLIAMS, D., YARBOROUGH, D., TUCKER, S. **Row 4** WEBBER, M., LIPSCOMB, J., LUKOWIAK, P.,



Row 1 GRIFFIN, H., BRAWN, R., ANDREWS, A. **Row 2** COOPER, R., EDGERTON, M., BEMORY, G.



FIELDS, B., FLEURIZARD, Y., ALSTON, E., GREEN, W., GREEN, B.

BEAUTY CULTURE



(left to right) BEEM, D., GREEN, E., ALFIERI, M., ESPOSITO, I., CAGGIANO, A. M., GUARTIERI, D.



(left to right) CASTELLANO, J., FALCO, D., ENERS, A., BAMLES, C. A., FELT, E., LIPOMA, M., ABRANTES, J.



(left to right) BRODSKY, I., CRANO, D.

DENTAL ASSISTANT I



HARTE, K., HESSELBIRG, J., DeLORENZO, E., LAUGOIS, M.



GILBERTI, A., BLACK, N.

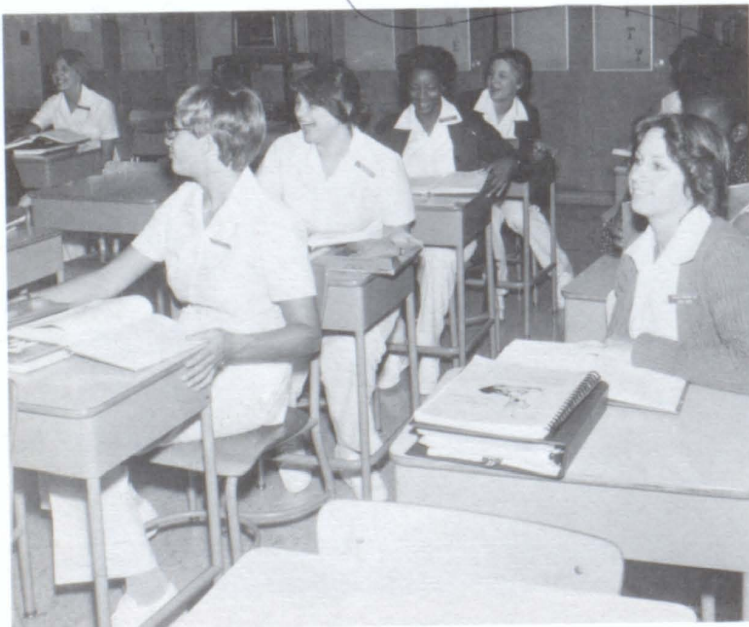


BIANCOLA, D., ALOE, L.



CAMISA, A., DeRITES, L., BOVE, L., BOUCHOUX, A., MRS. CARPENT

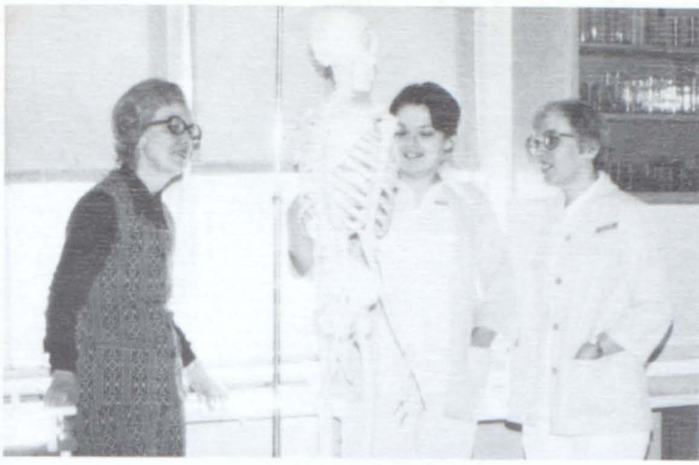
DENTAL ASSISTANT II



THORNMAN, T., TESTA, K., TRUESDALE, C., WALSH, P., MEASEL, S., OWENS, P.



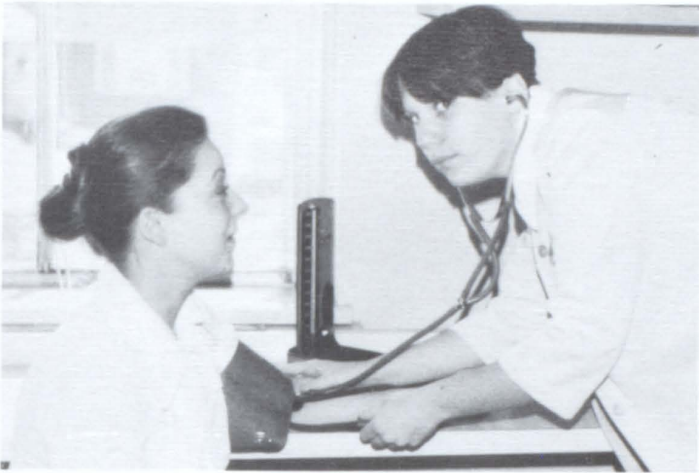
TRUESDALE, C., LITTLE, E., LEE POW, M., PIGNATIELLO, S., MUEUS
NICASTRO, J., PRATT, R., RICH, B., WALSH, P.



MISS TACZY, M. KAZLAS, A. PAOLINO.



D. SINCOCK, S. MALONEY.



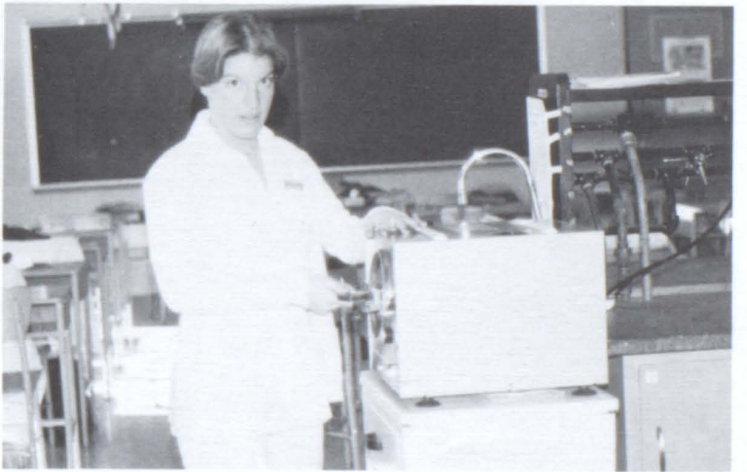
L. FORMATO, L. O'BOYLE.



V. MANCUSO, T. FASULO.



D. ST. THOMAS



M. MARINARO.

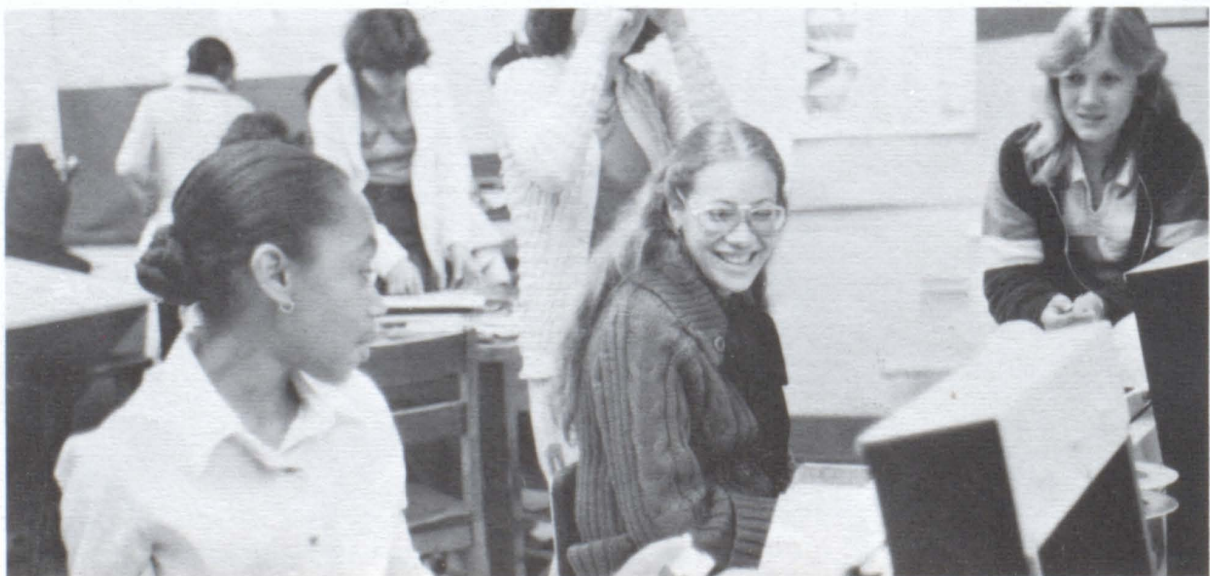


A. PAOLINO, V. MANDUSO, S. MALONEY, L. FORMATO, D. COPPOLA, M. MARINARO, L. LA STELLA, MISS. TACZY, D. SINCOCK, L. O'BOYLE, M. KAZLAS, T. FASULO, D. ST. THOMAS, K. GILLIAM.

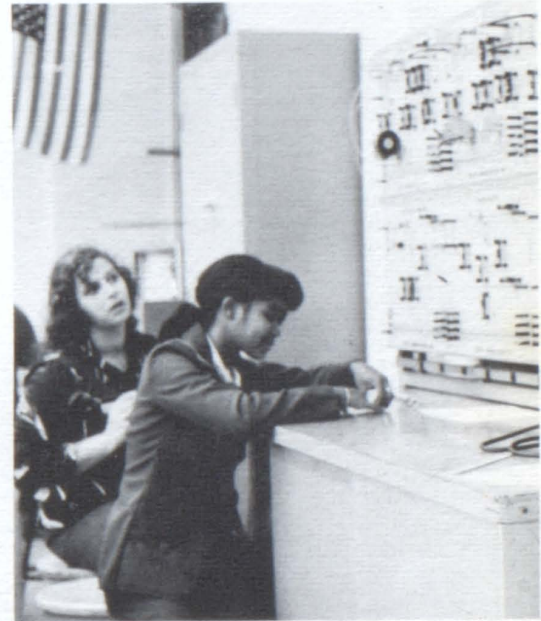
M
E
D
I
C
A
L

A
S
S
I
S
T
A
N
T

GRAPHICS



ELECTRONICS

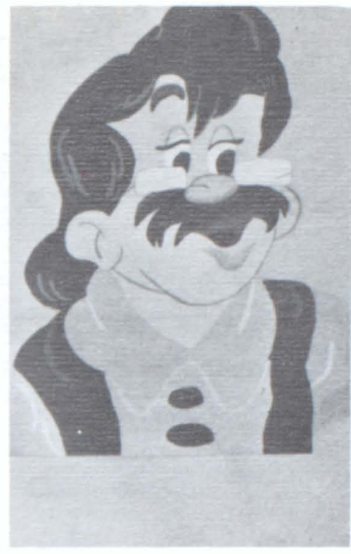
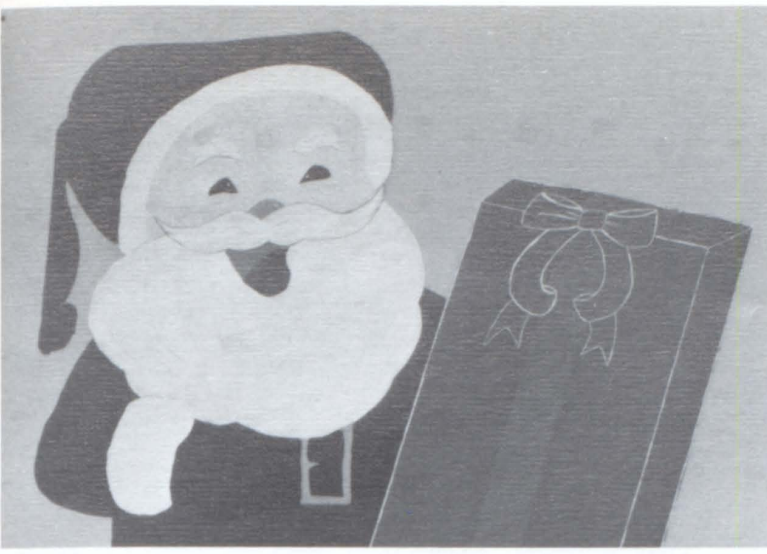


T
I
S

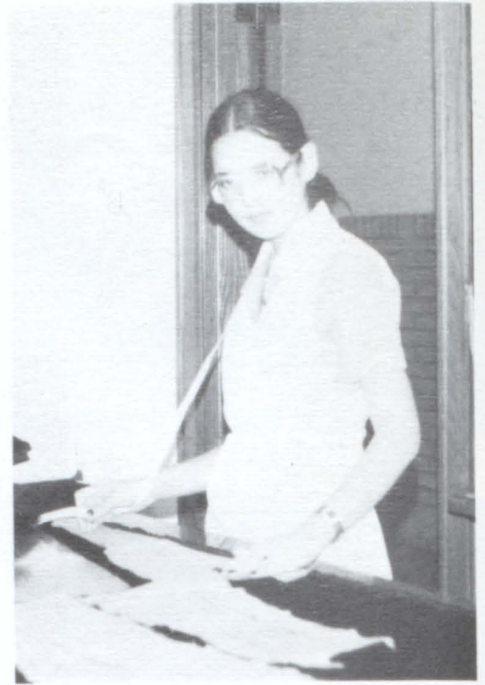
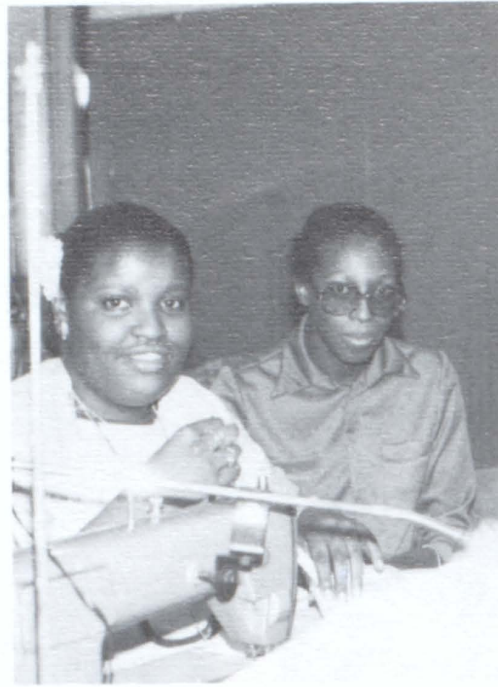
T
H
E

S
E
A
S
O
N

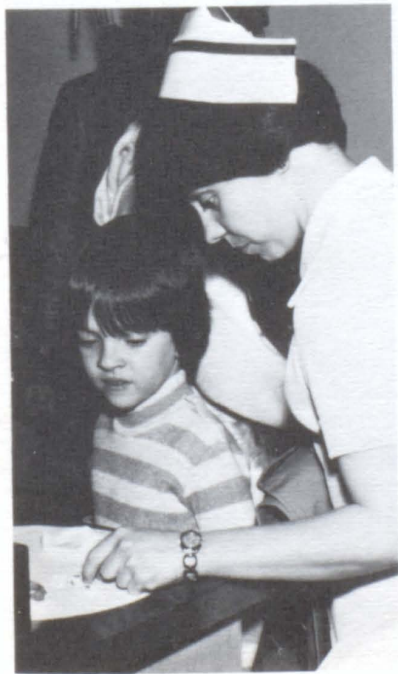




DRESSMAKING



OPEN HOUSE



BUSINESS MACHINES II



PARENTS NIGHT

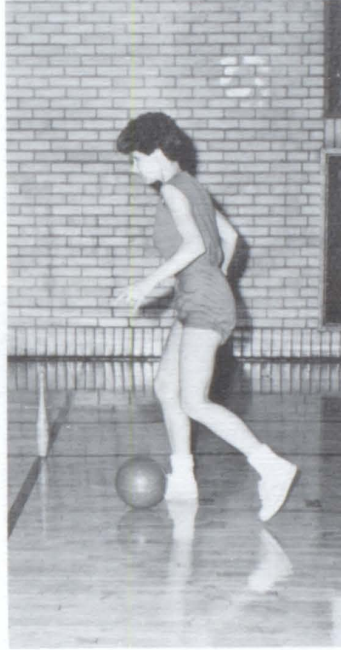


F
O
O
D

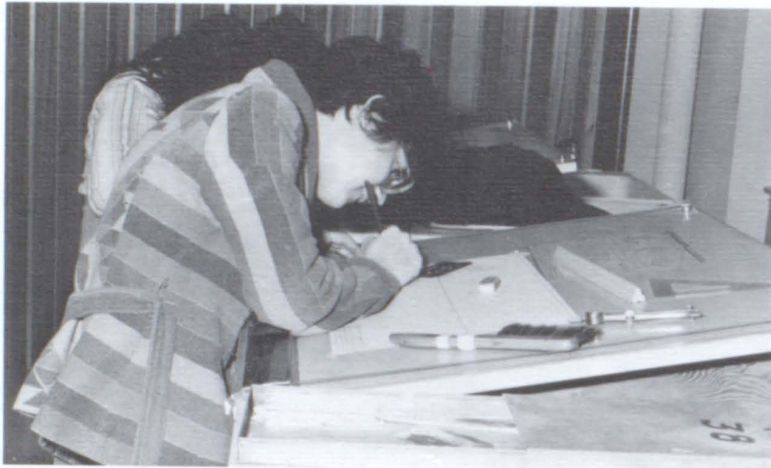
S
E
R
V
I
C
E



EXERCISE TIME



DRAFTING



GLEE CLUB



(TOP ROW, LEFT TO RIGHT) ANETTE BURO, RITA McCANN, VALERIE OLIVER, EVELYN PAUL, PAT BRASSINGTON, LUPY FANNEITTY. (BOTTOM — LEFT TO RIGHT) TERESA GOLDMAN, ANNA PAGAN, EVELYN MAISONAVE, PHYLLIS NITTOLI, GAIL PERRY, JOYCE LOMBARDINI, NANCY IRAZARRY.



(TOP ROW — LEFT TO RIGHT) MADELINE DIEPPA, VIVIAN MASCUCCI, ANGELA GONZALEZ, TERRY NISCOVIACIA, TERESA BYRNE, MAGGIE RODRIGUEZ. (BOTTOM ROW — LEFT TO RIGHT) DIANE HARVEY, ANITA WHITEHURST, MAGGY DE JESUS, DOROTHY BLAKELY, TRACY BAILEY, BEVERLY SALVATORIELLO.

FASHION SHOW



MODEL — CYNTHIA WHITE
GOWN BY — NANCY NIEVES



MODEL — MIRIAM ALANZO
JUMPSUIT BY — SANDRA LEWIS



MODEL — LUPY FANEITTY
GOWN BY — MINNIE LEE



MODEL — LISA HEWLETT
GOWN BY — LISA HEWLETT



MODEL — LORETTA DINKINS
SUIT BY — MARION WILSON



MODEL — DOROTHY BLAKELY
GOWN BY — DOROTHY BLAKELY



MODEL — ROBIN SPARKS
GOWN BY — JEAN JACKSON



MODEL — PHYLISS NITTOLI
GOWN BY — ANGELA BAILEY

FASHION SHOW



DIANE RIVERA WORKING ON HER GOWN.



MODELS — SHAWN ARMSTRONG, LORETTA DINKINS, LUPY FANEITTY, LISA HEWLETT
GOWNS BY — JEANETTE McIVER, MARION WILSON, MINNIE LEE, LISA HEWLETT
SEATED — MRS. V. JOHNSON TEACHER



MODEL — DOROTHY BLAKELY
FITTER — DELIA MARTINEZ



ROSALIND PHILLIPS WORKING ON HER JACKET.



MODELS — DOROTHY BLAKELY, CYNTHIA WHITE, MIRIAM ALANZO PHYLISS NITTOLI, ROBIN SPARKS, LUPY FANEITTY
GOWNS BY — DOROTHY BLAKELY, NANCY NIEVES, SANDRA LEWIS, JEAN JACKSON, SANDRA LEWIS



MODEL — SHAWN ARMSTRONG
GOWN BY — JEANETTE McIVER



MODEL — LUPY FANEITTY
Gown BY — SANDRA LEWIS



MICHELLE JONES WORKING ON HER DRESS.

PHOTOGRAPHY CLUB



M. JONES, C. McRAE, R. QUINLY, A. SIMS, L. GARCIA, V. GORNELLI, M. COLON, J. LUZZI, C. KILCOYNE, D. VALDEZ, R. PHILLIPS, E. PAUL, D. COLLINS, M. KLEHM, P. NITTOLI.

DANCE COMMITTEE



SITTING — MR. N. JOERG — STUDENT COUNCIL ADVISOR, **FIRST ROW:** P. NITTOLI, M. DANIELS, D. DELEVA, V. DELGUERCIO, L. ELEKES, **SECOND ROW:** T. BYRNE, D. BROWN, V. BROWN, V. DARGAN, J. DISARNO, T. CICALA, P. DILL, **THIRD ROW:** L. FANEITTY, R. McCANN, R. BROWN, D. BERADI, J. DIAZ.

NEWSPAPER STAFF



FIRST ROW: T. BYRNE, M. JONES, L. LEE, J. GREENLEE, **SECOND ROW:** M. COLON, P. NITTOLI, T. LLOYD, C. BRANA, M. SUEHLA, **THIRD ROW:** L. BRANA, A. VELLA, L. TURSI, P. PATTERSON, T. SCHAAL, **FOURTH ROW:** L. FANEITTY, M. FALCO, R. HARRIS, B. MITCHELL, T. ROZIER, A. EROSA.

CAFETERIA



BOTTOM ROW — R. ROSA, D. DE LEVA, V. DEL GUERCIO, S. CARLUCCI, J. DE SARNO, A. PINCKNEY, G. PEPE, M. DANIELS
MIDDLE ROW — J. DIAZ, C. SCALZI, J. NEGRI, D. SCHOMAKER, S. WILLIAMS, B. FLEMING, T. DAVIS **TOP ROW** — K. ROBINSON,
 A. BAILEY, D. MALONE, J. PARRIS, L. ELEKES, P. DILL, R. BROWN, M. DICKSON, D. DECROCE



BOTTOM ROW — L. HEWLETT, H. TENORE, C. SCHAIBLE, S. GIBBS
TOP ROW — B. FLEMING, B. HILL, N. NIEVES, T. DAVIS, L. DINKINS, V. DARGAN



BOTTOM ROW — T. BYRNE, **TOP ROW** — M. FALCO, P. NITTOLI, L. FANEITTY, B. MITCHELL

CAREER ORIENTATION



CAFETERIA STAFF



JEANETTE CHRISSAFIS, YOLANDAE VALVANO



JENNIE CONTE, ORSOLA CAPRIO, GERITA DESTEFANO



ELIZABETH GILLESPIE

SECURITY



PATRICK SORIANO

CUSTODIAL STAFF



ALBERT REDDING



LOUIS LILOIA



CHESTER ARMENO



JAMES IOVINO



EDWARD BETTELLI
HEAD CUSTODIAN

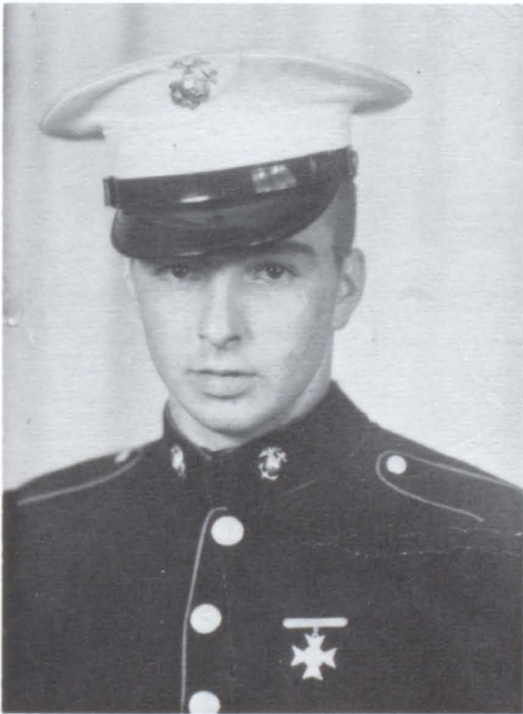
CONGRATULATIONS



Tonia Rozier, of Commercial Art 11, was awarded a \$50.00 Saving Bond for winning First Prize in The State Level Poster Contest.

Mr. Robert N. Taylor, Director of Road Safety of the New Jersey Automobile Club presented it to her. Also shown are Mrs. Dolly Kelley Art Instructor, and Mr. Thomas Biglin Principal.

GUESS WHO!



NEW YORK NEW JERSEY PENNSYLVANIA

Tappin's

JEWELERS SINCE 1877

795 BROAD ST.
NEWARK, N.J. 07102
201-623-1100

482-3248 - 483-9796



Lou Caputo

Florist

MEMBER OF NEWARK RETAIL FLORIST ASSOCIATION
MEMBER OF FLORIST TELEGRAPH DELIVERY SERVICE
MEMBER OF NEW JERSEY STATE FLORIST ASSOCIATION

JERRY RUSSO

51 BLOOMFIELD AVENUE
NEWARK, N. J.

(201) 759-9851

OPEN DAILY 10 A.M. TO 6 P.M.
MON., WED., FRI. TILL 9 P.M.

**BIG DEAL
FACTORY OUTLET**

GENERAL MERCHANDISE
WHOLESALE AND RETAIL
FINE JEWELRY MADE TO ORDER
14 AND 18K GOLD
HAND WORKMANSHIP - REPAIRING

32 HECKEL STREET

BELLEVILLE, N. J. 07109

485-4220



Forest Hill Driving School

- LATEST METHOD OF INSTRUCTIONS
- WRITTEN AND ROAD TEST SERVICE*
- DAY AND EVENING LESSONS

ADO CASTELLUCCIO

665 MT. PROSPECT AVE.
NEWARK, N. J.

WE DELIVER

CASA DI PIZZA

743-9705

32 BLOOMFIELD AVE. BLOOMFIELD, N.J.

OPEN 7 DAYS HOURS OPEN 11 A.M. TO 12 P.M. FRIDAY AND SATURDAY TO 12:30
SUNDAY 3:00 TO 12:00



DE FRANCO
LIMOUSINE SERVICE

456-466 - 3rd Ave. Newark, N. J.

Phone 483-1917



HOMEMADE ICE CREAM
AND BIRTHDAY CAKES
OUR SPECIALTY

KIELB'S
Quality Bakery and Delicatessen

OPEN 7 DAYS A WEEK
482-0585

919 FRANKLIN AVENUE
NEWARK, N. J.

MALL CAMERA, INC.

PRUDENTIAL MALL
NEWARK, N.J. 07102
623-7404



THE Chandelier

340 FRANKLIN AVENUE
BELLEVILLE, NEW JERSEY 07109
Phone: (201) 759-2500

- WED. 9 A.M. TO 7 P.M.
- THURS. 9 A.M. TO 5 P.M.
- FRI. 9 A.M. TO 9 P.M.
- SAT. 8 A.M. TO 6 P.M.

CLOSED
MONDAY AND TUESDAY
482-7200

Aquarius Coiffures
WEDDINGS AND SPECIAL OCCASIONS
BY APPOINTMENT

186 BLOOMFIELD AVENUE

NEWARK, N. J. 07104

CONGRATULATIONS
JoAnn
Love Always

Mom, Dad, Patrick and John,
Snoopy Too

Congratulations JoAnn
Love Always

Grandma, Grandpa, and
Aunt JoAnn
Rusty Too

Congratulations
Rita

Employees of
Maplewood Country Club

KATHERINE'S PASTRY SHOP
WHERE QUALITY COMES FIRST
WEDDING & PARTY CAKES THAT ARE DIFFERENT

743-6719

556 BLOOMFIELD AVENUE
NEWARK, NEW JERSEY

CONGRATULATIONS

DIANE

LOVE
FRANK

676-8428

CHICKY'S GROCERY

Home of the OLD Fashion
ITALIAN SAUSAGE
Wholesale & Retail
43 Park St., Orange, N.J.



ARTIST'S & DRAFTING SUPPLIES, INC.
233 WASHINGTON STREET
NEWARK, NEW JERSEY 07102

201 642-5712

John Sutton

PARK AVENUE FUNERAL HOME
480 PARK AVENUE
ORANGE, NEW JERSEY 07050

CLIFFORD A. MARCHBANK, JR. MANAGER
(201) 678-3484

Phone: 748-9759

Char - Lotte
BEAUTY LOUNGE

547 Bloomfield Ave.
(Center)
Bloomfield, N.J.

Mr. Nick, Prop.
Air Conditioned



Phone: 748-4823

JUSTIN'S BEAUTY SUPPLY CO.

"For All Your Beauty Needs"

CLAIROL • ROUX • L'OREAL • WELLA
FULL LINE OF WIGS

14 BELLEVILLE AVENUE

BLOOMFIELD, N. J. 07003

West Essex Electrical Supply Co.

Wholesale Distributors

Electrical Supplies & Lighting Fixtures

Industrial - Commercial - Residential
657 Bloomfield Ave., West Caldwell, N. J.

228-0411

— ELECTRIC HEAT —



IN HUDSON COUNTY

Silverman Electric Supply Co.

715 Newark Avenue, Jersey City, N. J. 07306

Oldfield 3-5331

*Excellence in
Wedding
Photography*



Lorstan-Thomas Studios

EST. 1930

See your yellow pages for our nearest studio location.

Good Luck In The
Future
Your North Ward
Councilman

ANTHONY R. CARRINO



746-2620

Carl Cooper — John Koch

Roofing Specialists
Siding — Gutters — Alterations — Additions
Aluminum Windows & Doors

298 E. Cedar St.
LIVINGSTON, N. J. 07039

LORRAINE

THE NEW

BERNICE FASHIONS

547 BLOOMFIELD AVE.
BLOOMFIELD, N. J. 07003

MON & FRI TILL 9:00
748-6985

RAM
EXTERMINATING SERVICE
"WE ELIMINATE"

ROACHES
INSECTS
MICE & RATS



TERMITES - WATERBUGS ETC
REASONABLE RATES

678-5638

315 TREMONT AVE EAST ORANGE
N.J. 08827

FIND US IN THE YELLOW PAGES

SAVAGE EXTERMINATORS
PEST CONTROL

624-1880
OR
643-3789

NEWARK CAPLAN SEWING MACHINE CO.
EVERYTHING FOR THE NEEDLE TRADE SINCE 1946

New & Used Equipment for
the Factory, Shop or the Home
WHOLESALE • RETAIL

NEEDLES
PARTS
(ALL MAKE MACHINES)
FEET
FEEDERS
PLATES
ATTACHMENTS
MOTORS
TABLES
BELTING
STAINLESS OIL
SILICONE
(LIQUID AND SPRAY)
WISS SHEARS



PLAIN SEWERS



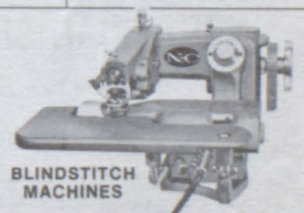
CLUTCHES
CLUTCH
MOTORS



OVERLOCKS



WALKING FOOT



BLINDSTITCH
MACHINES

Same Day Shipment
On All Parts
201 • 481-4400

SPECIALISTS
IN COMPLETE
SHOP SET-UPS



BUTTON
SEWERS

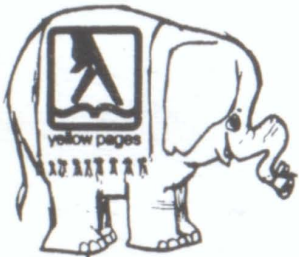
PORTABLE
OVERLOCKS



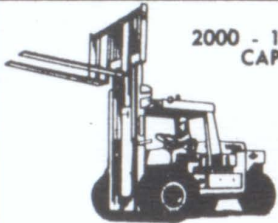
NEWARK CAPLAN SEWING MACHINE CO.
73 WINTHROP ST., NEWARK, N.J. 07104

REMEMBER—


if you forget
our name
you'll find
Our Ad
in the



2000 - 120,000 LBS
CAPACITY



**ACTION
LIFT TRUCKS** INC.



- NEW & USED EQUIPMENT
- RENTALS
- LEASING & FINANCING
- ALL MAKES & MODELS

CALL **589-2320** PNEUMATIC FORK LIFTS
35 AVENUE C NEWARK

UNIFORMS & ACCESSORIES

- DOCTORS
- NURSES
- DENTAL
TECHNICIANS
- LAB
TECHNICIANS
- WAITRESSES
- BEAUTICIANS
- CHURCH GROUPS

NURSE CITY

DOMINICK CLARO

1212 RAYMOND BLVD.
NEWARK, NEW JERSEY 07102
PHONE (201) 643-8278

GROUP FITTINGS

743-4434

743-4972

LA MONICA MEMORIAL HOME
R. SAMUEL LA MONICA
JOSEPHINE Z. LA MONICA
DIRECTORS

299 BLOOMFIELD AVE.

BLOOMFIELD, N. J.

201 623-2292

OUR SPECIALTY—INITIAL CLEANING

Dunn & Sons
MAINTENANCE CORPORATION
GENERAL CLEANING & FLOOR CARE

Our Best Wishes to all Graduates of '78

DANNY DUNN
OPERATIONS MANAGER

657 HIGH STREET
NEWARK, N. J. 07102

373-4977 9:00 A.M.-6:00 P.M.

Clairol - Wella - Roux - Loreal
Revlon - Breck

Musum Co. & Sons

(Wishes Good Luck To All)

**Barber and Beauty Supplies
and Equipment**

We carry a complete line of
blower dryers and brushes.

1013 SOUTH ORANGE AVE.
NEWARK, NEW JERSEY
(Vailsburg)

923-7900

Auto Parts
Supplies
Equipment

Mac Automotive Warehouse

JAMES STERN

28-40 CORDIER STREET
IRVINGTON, N. J. 07111

I wish to take this opportunity to thank all the girls on the Yearbook staff for contributing their time and talents. Working on this book with you has been an enjoyable and memorable experience. It shows what we can accomplish working together.

Mr. R. Jaffe
Yearbook Advisor

OUR FOUR YEARS OF HIGH SCHOOL

The greatest times we spent together
We don't know now but realize later

Four years of good times and real fun
Do we realize how fast they have gone?

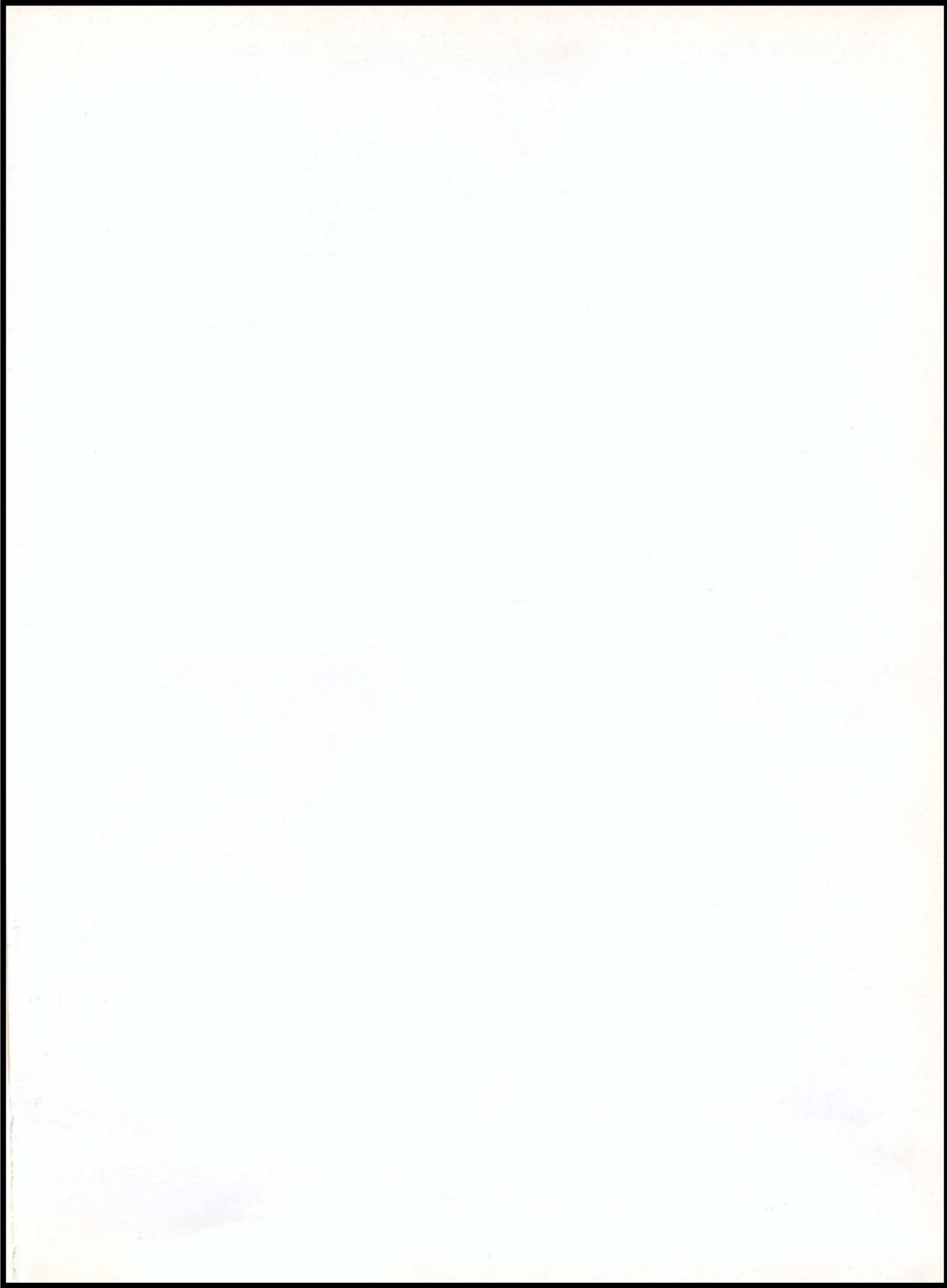
We had our bad times I do admit
But were those teachers really strict?

It's all gone now — the good and bad
But in our minds we're really glad.

Well, good luck now, in the future years,
and never, never shed any tears.

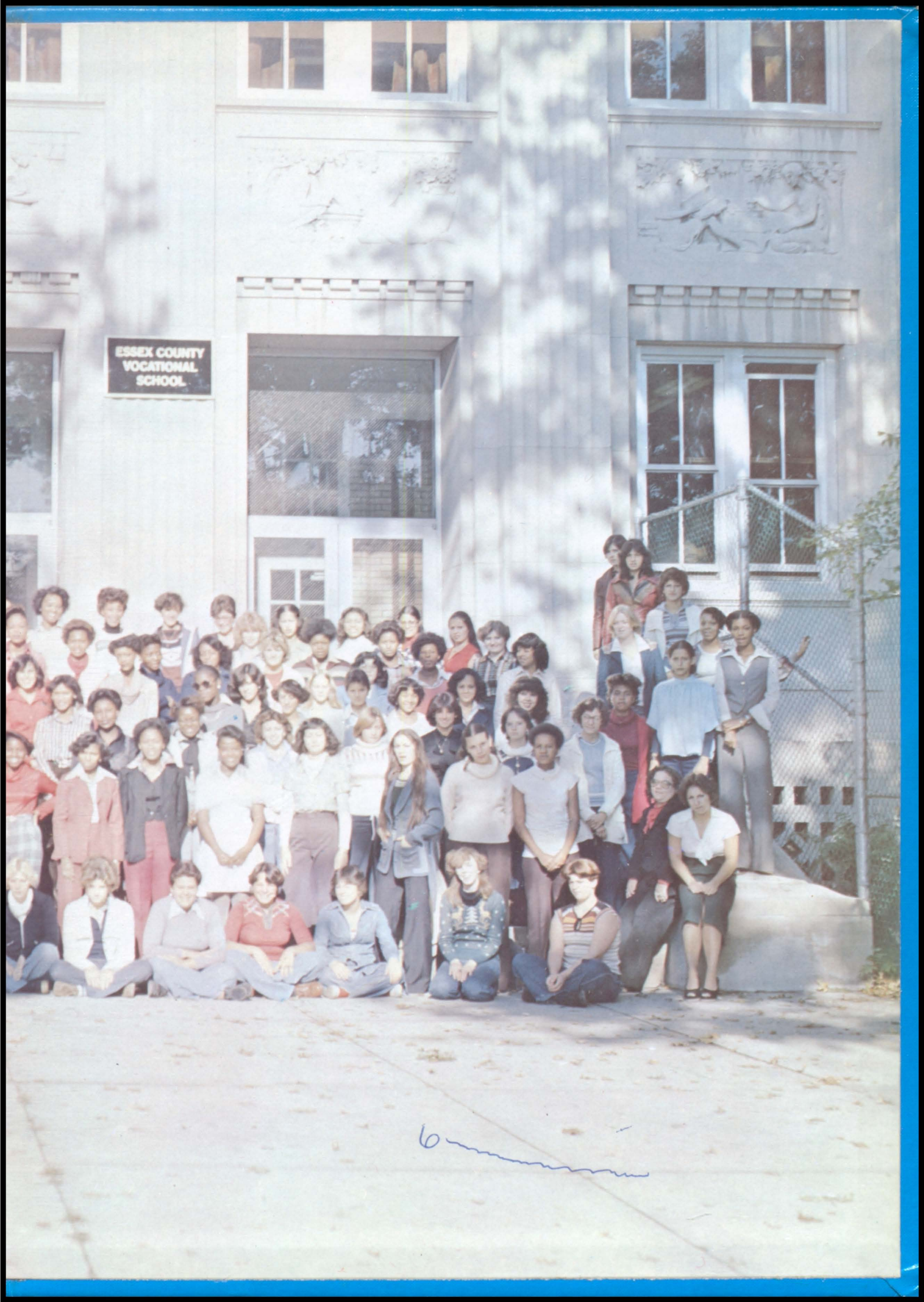
For life is too short to ever look back
So look ahead to your new track.

J. Luzzi
BM 12-2





ESSEX COUNTY
VOCATIONAL
SCHOOL



6

