

1955

Athena





Dedication

Patience

Advice

Responsibility

Enthusiasm

Necessities

Trust

Security

The members of the Senior Class dedicate the 1955 edition of the "ATHENA" to our parents. Without their help and inspiration, the top step would never have been reached, and our ultimate success, attained.

T
H
E
1
9
5
5

A T H E N A

Published by the

SENIOR CLASS

of

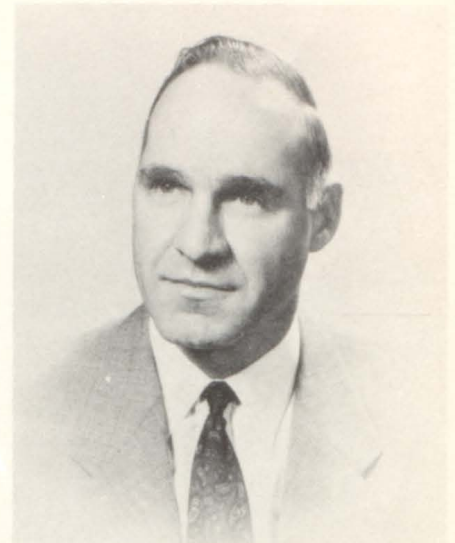
THE ESSEX COUNTY VOCATIONAL
and
TECHNICAL HIGH SCHOOL

300 NORTH 13TH STREET • NEWARK, NEW JERSEY

Big Dipper



GEORGE W. MORGENROTH
Director



DR. PHILIP H. HANEY
Assistant Director



ALBERT J. CICCONE
Secretary and Business Manager



EDWARD J. COUGHLIN
*Supervisor
Department of Guidance
and Placement*



ELSTON W. MEYER
*Supervisor of Apprentice Part
Time and Evening Instruction*

The Sun

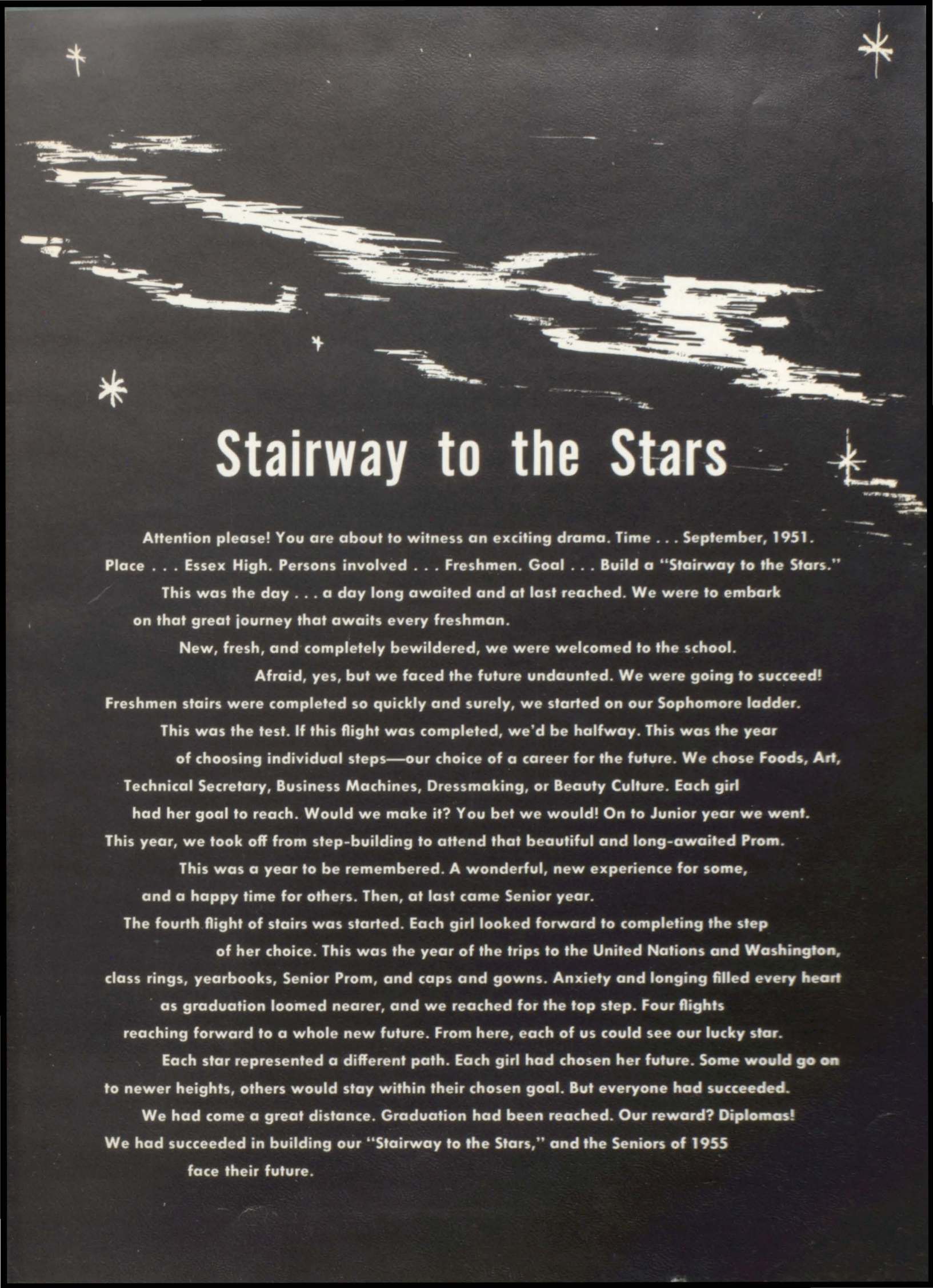


SALLIE H. RICHARDSON

Principal

Mrs. Richardson—you have been our inspiration and guide during our four year climb up the long "Stairway to the Stars." You have not let your busy life as principal interfere with your personal interest in us and our problems. Your personality and superior judgment personifies your familiar creed. "Here at Essex High we want you to learn to live and make a living." Each of us has reached her star. Our sincere thanks.





Stairway to the Stars

Attention please! You are about to witness an exciting drama. Time . . . September, 1951.
Place . . . Essex High. Persons involved . . . Freshmen. Goal . . . Build a "Stairway to the Stars."

This was the day . . . a day long awaited and at last reached. We were to embark on that great journey that awaits every freshman.

New, fresh, and completely bewildered, we were welcomed to the school.

Afraid, yes, but we faced the future undaunted. We were going to succeed!
Freshmen stairs were completed so quickly and surely, we started on our Sophomore ladder.

This was the test. If this flight was completed, we'd be halfway. This was the year of choosing individual steps—our choice of a career for the future. We chose Foods, Art, Technical Secretary, Business Machines, Dressmaking, or Beauty Culture. Each girl had her goal to reach. Would we make it? You bet we would! On to Junior year we went. This year, we took off from step-building to attend that beautiful and long-awaited Prom.

This was a year to be remembered. A wonderful, new experience for some, and a happy time for others. Then, at last came Senior year.

The fourth flight of stairs was started. Each girl looked forward to completing the step of her choice. This was the year of the trips to the United Nations and Washington, class rings, yearbooks, Senior Prom, and caps and gowns. Anxiety and longing filled every heart as graduation loomed nearer, and we reached for the top step. Four flights reaching forward to a whole new future. From here, each of us could see our lucky star.

Each star represented a different path. Each girl had chosen her future. Some would go on to newer heights, others would stay within their chosen goal. But everyone had succeeded.

We had come a great distance. Graduation had been reached. Our reward? Diplomas!
We had succeeded in building our "Stairway to the Stars," and the Seniors of 1955 face their future.

The Moon



To

MARGUERITE E. WHITNEY

our friend and adviser, we, the class of 1955, affectionately dedicate our yearbook, *The Athena*. Your high standards, your fine understanding of youth, your patience and tolerance when we failed to reach the goal have been an inspiration to us. Because you have taught us the importance of healthy minds and bodies, we believe we are prepared to enter the business and industrial world with assurance that we will succeed.

We are pleased to have you graduate with us and we wish you success in planning an interesting program which we hope you will enjoy for many years.

Galaxy Officers 1955



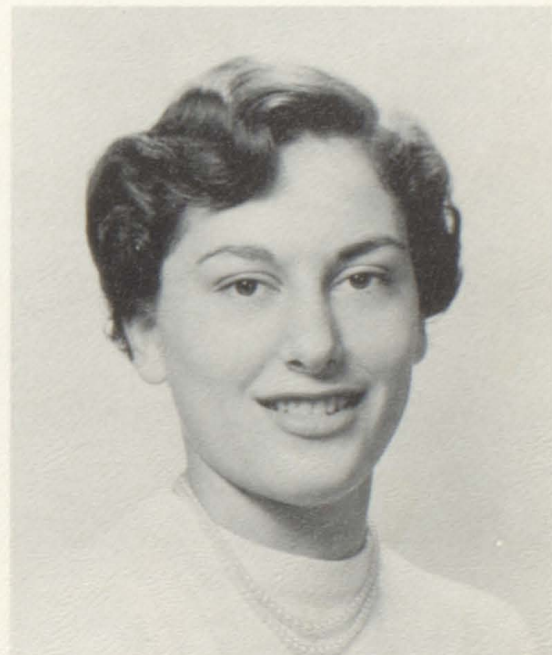
BETTE MASSENZIO
President



JOAN CHAPMAN
Vice-President



MARGARET FINAN
Secretary



VIRGINIA BALDANTE
Treasurer

North Star



ELIZABETH R. DUNHAM
Counselor

Milky

Way



FLORENCE ADAMS
Beauty Culture



VIOLA APPLIGATE
Office



RUTH BURNETT
Music



ROSALIE CAVALLO
English



HARRY CORSON
Business Machines



ELEANOR DEARNALEY
Science



JOSEPHINE L. DE MARCO
Related Science



EVELYN DUTTON
Dress Design



MARY I. EDMISON
School Nurse



LILLIE FAIRCHILD
Dental Assistance



RUTH FITCHETT
Practical Nursing



LILLIAN GARDNER
Medical Secretary



ELIZABETH HODGINS
Related Art



GRACE HYLAND
Cosmetology



ALBERTA JORDAN
English — Social Studies



DAISY LEHMAN
English



JAMES LEITH
Mathematics



INEZ E. MACK
Office



ELIZABETH McAFEE
Practical Nursing



MARION M. MULLIS
Beauty Culture



GEORGIA L. NORTON
Stenography



URSULA NIXON
Sewing



R. NEAL OWENS
Social Studies



REGINA O'TOOLE
Textiles — Patternmaking



MARIE O'H. PARSIL
Dietetics



MAUDE PENNINGTON
Office



PAULINE REILLY
Commercial Art



ALICE ROBERTS
Dressmaking

Milky



VERA ROSSMAN
Clerical Practice



LILA SCHAEFFER
Secretarial



ADOLPH P. STANZIALE
Driver Education



ADA SKURATOFSKY
Bookkeeping — Mathematics



MARGARET TACZY
Practical Nursing



ELIZABETH TRINKS
Dress Design

Way



KATHRYN VAN NEST
Food Service



MAUDE V. VANCE, M.D.
School Physician



EVELYN VEENSTRA
Health — Guidance



BERNICE WARRICK
Duplicating Department



ETHEL WOOD
Librarian



SUSAN WOOD
Beauty Culture

Not photographed
ROSAMOND MORROW
Cosmetology





*Climb High
Climb Far
Our goal the sky
Our aim the star*

Editor-in-Chief
MARJORIE LANGFORD

Assistant Editor
ANGELA TOBIA

Assistants
RUBY SILAS
MARY ANN SETTELE
MARGUERITE JENKINS
ANN PETRELLA
JEAN STAMKO

Art Editor
FRANCES SCHAEFFER

Assistants
VIRGINIA BALDANTE
CARMELLA VIZZONE
LUCY WISE
CONCETTA SQUILLARO

Business Manager
JANE KURTZ

Assistant Business Manager
DEANNA SLADER

Assistants
MARILYN DeVORE
MARY KUKOY
PATRICIA O'CONNELL
MARGARET DENARDO
MADELINE DENARDO
PATRICIA CHAMBERS
NANCY CHRIS
ANN GAETA
JULIA MORGAN
JOAN D'ALESSIO
ELEANOR LIPSCOMB
ETHEL PONYMAN
ELAINE RUPINSKI



JUNIOR
GALAXY
1955



FRANK SCHAEFFER
1955



b eauty
c ulture



beauty is
your business



Glamourizing the American woman is a multi-million dollar business and provides one of the most interesting and profitable careers for women.

Evelyn Bennett

One Hawkins Court
Newark, New Jersey

Beauty Culture "Evey"

Bookworms

PET EXPRESSION: "Guess what happened?"

HOBBY: Saving movie stars' pictures

*"She's quiet, she's shy,
but there's mischief in her eye."*



Norma Carpinello

405 South 10th Street
Newark, New Jersey

Beauty Culture "Carpy"

President of Class, Treasurer of School,
Recreation Committee

PET EXPRESSION: "Oh! you know what I mean."

HOBBY: Piano

"Sweet, small, and a smile for all."

Joan Chapman

22 Newton Street
Newark, New Jersey

Beauty Culture "Chappie"

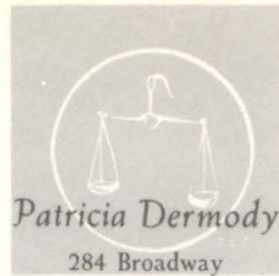
Vice-President, Secretary of Class, Recreation,
Vice-President of Senior Class

PET EXPRESSION: "Ooh how nervous!"

HOBBY: Watching St. Joseph's in Drum Corps
Competition

*"It's nice to be natural,
when you're naturally nice."*





Beauty Culture "Derm"

PET EXPRESSION: "Listen kid I don't need you!"

HOBBY: Skating

*"She is slim and tall,
and friendly to all."*

Patricia Elsman

10 Crescent Lane
Irvington, New Jersey

Beauty Culture "Chickey"

PET EXPRESSION: "Hay Derm, who's your friend?"

HOBBY: Collecting Photographs

*"A little work, a little play,
keeps her going through the day."*



Rosalyn Fieramosca

163 North 16th Street
East Orange, New Jersey

Beauty Culture "Lynn"

Bookworms

PET EXPRESSION: "Ya hate me!"

*"Not a worry in her head,
and her every thought is Fred."*





197 North 19th Street
East Orange, New Jersey

Beauty Culture "Red"

Publicity Committee, Recreation Committee,
Glee Club, Auditorium Committee

PET EXPRESSION: "Did you see Chuck?"

HOBBY: Skating at "Twin City"

*"Her disposition is as
bright as her hair."*



Janet Heaver

224 3rd Street
Newark, New Jersey

Beauty Culture "Jan"

Recreation Committee

PET EXPRESSION: "Oh, get out."

*"So quiet, sweet,
and always neat"*

Mary Ann Hefele

328 Lyndhurst Avenue
Lyndhurst, New Jersey

Beauty Culture "Mar"

PET EXPRESSION: "Bill!!!"

HOBBY: Skating

"If work interferes with pleasure, give it up."





Mary Ann Jannicelli

185 1st Avenue
Newark, New Jersey

Beauty Culture "Jan"

Recreation Committee

PET EXPRESSION: "Oh please."

*"To Mary Ann life is just a song
laughing, fooling, all day long."*

Louise Karos

10 Cutler Street
Newark, New Jersey

Beauty Culture "Lois"

President of Class, Glee Club,
Cafeteria, Housekeeping Committees

PET EXPRESSION: "I don't know!"

HOBBY: Collecting records and foreign money

*"An active member in our class
and a very bright and happy lass."*



Janet Lee

37 Concord Place
Union, New Jersey

Beauty Culture "Lee"

President of School, Vice-President of School,
Cafeteria Committee

HOBBY: Trying to beat Ray at checkers.

*"Happy, jolly, full of glee,
her manner is from sorrow free."*



Frances Martino

420 William Street
East Orange, New Jersey

Beauty Culture "Franci"

Bookworms, Cafeteria, Vice-President of Homeroom

PET EXPRESSION: "Yau lier."

*"Friendship and wit are
at her finger tips."*



Carole Mayland

278 Waverly Avenue
Newark, New Jersey

Beauty Culture "Cat"

President of Class, Vice-President of Class

PET EXPRESSION: "That's my Jackie."

*"She's pretty to walk with,
and witty to talk with."*

Joan Massari

1915 McCarter Highway
Newark, New Jersey

Beauty Culture "Joni"

Treasurer of Homeroom

PET EXPRESSION: "I have to write a letter."

*"She looks like an angel, acts like one too,
but you never can tell, what an angel will do."*





Catherine Molinaro

229 Berkeley Avenue
Newark, New Jersey

Beauty Culture "Cathy"

PET EXPRESSION: "Ah-h-h-h cute baby."

HOBBY: Dancing

*"A pleasant gal with lots of style,
but most of all we love her smile."*

Phyllis Palmieri

638 North 6th Street
Newark, New Jersey

Beauty Culture "Phil"

Vice-President of School, Housekeeping Committee

PET EXPRESSION: "Did you see my doll?"

HOBBY: Records

*"Her sweet ways have won her many friends,
and will continue to win her many more."*



Annette Pasquarosa

29 Garside Street
Newark, New Jersey

Beauty Culture "Pask"

PET EXPRESSION: "Sure he's got a cadillac!"

*"A smile and a personality
makes her a pleasant one to know."*



55 Emmet Street
Belleville, New Jersey

Beauty Culture "Ann"
Yearbook Staff

PET EXPRESSION: "I gotta call Joe."
"She has a laugh that's full of fun."



Patricia Schwartz

917 South 19th Street
Newark, New Jersey

Beauty Culture "Pat"
Cafeteria, Secretary of Class

PET EXPRESSION: "I hope Manny picks me up!"

*"A ring on her finger and
a smile on her face."*



Catherine Sembrot

311 William Street
East Orange, New Jersey

Beauty Culture "Cathy"
Secretary, Glee Club, Cafeteria

PET EXPRESSION: "All righty!"
HOBBY: Skating at Twin City

*"A cheerful smile in a quiet way
a pleasant word she'll always say."*





Dina Silvestri

601 North 5th Street
Newark, New Jersey

Beauty Culture "Dee"

Treasurer of Class, Recreation Committee

PET EXPRESSION: "Here hon."

*"Tony's ship never sails out of the bay,
without carrying her heart as a stowaway."*

Jean Stamko

817 South 15th Street
Newark, New Jersey

Beauty Culture "Jeannie"

President of Class, Housekeeping Committee,
Cafeteria, Treasurer, Yearbook Staff

PET EXPRESSION: "I hope Bob comes home this week."

*"Just a gal, you'll admit
happy, smiling, full of wit."*



Rosalie Torluccio

103 North 3rd Street
Newark, New Jersey

Beauty Culture "Ro"

Cafeteria, Publicity Committees

PET EXPRESSION: "Oh stop."

HOBBY: Reading

*"A charming, friendly girl is she,
as surely she will always be."*



business
Machine
practices



do figures
really count?



Numerically speaking, of course, they
certainly do!



Patricia Chambers

63 12th Avenue
Newark, New Jersey

Business Machines "Pat"

Vice-President of Junior Homeroom, Glee Club,
Yearbook Staff, Secretary of Senior Homeroom

PET EXPRESSION: "Hay Dad."

HOBBY: Roller skating

"Dynamite in a small package."

Theresa Anne Cuttone

429 South 11th Street
Newark, New Jersey

Business Machines "Terry"

President of Homeroom, Bookworms,
Secretary of Class, Glee Club

PET EXPRESSION: "It's a sin."

HOBBY: Collecting Frank Sinatra Records

"It's love, it's love, it makes the world go round."



Joan D'Alessio

39 Magnolia Lane South
Newark, New Jersey

Business Machines "Joni"

Cheerleader, Recreation Committee,
Treasurer of Homeroom, Junior Representative,
Yearbook Staff

PET EXPRESSION: "You think it's a joke."

HOBBY: Dancing

*"Full of laughter and mischief too,
when you're with Joni you can't feel blue."*



Marnette De Merchant

69 Harper Avenue
Irvington, New Jersey

Business Machines "Mickey"
Glee Club

PET EXPRESSION: "Nast break."
HOBBY: Skating

*"When she and Don are far apart
Mickey is faithfully saving her heart."*



Madeline Denardo

954 Franklin Avenue
Newark, New Jersey

Business Machines "Twin"

Cafeteria, Housekeeping Committee, Bowling Club,
Treasurer of Freshman, Sophomore Year,
Yearbook Staff, Publicity Committee

PET EXPRESSION: "That's the breaks."
HOBBY: Drawing

*"Madeline is a quiet lass,
yet how well she does in class,"*

Margaret Denardo

954 Franklin Avenue
Newark, New Jersey

Business Machines "Marge"

Cafeteria, Housekeeping Committee, Bowling Club,
Treasurer of Freshman, Junior Year
Yearbook Staff, Publicity Committee

PET EXPRESSION: "You're darn straight."
HOBBY: Collecting movie magazines

"What I think, I utter."





Florence Di Chiara

525 Lake Street
Newark, New Jersey

Business Machines "Flo"

Treasurer of Homeroom

PET EXPRESSION: "Oh how nervous."

HOBBY: Drawing

*"You'll know her by her lovely hair,
she is also very fair."*

Joyce D. Ernst

103 William Street
East Orange, New Jersey

Business Machines "Joy"

Glee Club, Auditorium Committee

PET EXPRESSION: "There ain't huh."

HOBBY: Roller skating

*"She's always laughing and nice to know.
Tommy would like to have her so."*



Ann S. Gaeta

7 Passaic Avenue
Belleville, New Jersey

Business Machines "Annie Rooney"

Assistant Treasurer of School, Treasurer of Bookworms,
Vice-President of Homeroom, Dramatic Club,
Yearbook Staff

PET EXPRESSION: "My brother Billy."

HOBBY: Baseball

*"A jolly laugh that can't be imitated . . .
proud possessor of eye catching dimples."*





Joan Gesior

177 Isabella Avenue
Newark, New Jersey

Business Machines "Joanie"

Vice-President of Bookworms, Dramatic Club,
President of Junior Homeroom Class

PET EXPRESSION: "Give me five."

HOBBY: Swimming, skating

*"She is quiet and a little shy,
but there's mischief in her eye."*



Elisabeth Ann Gribben

170 Branch Brook Drive
Belleville, New Jersey

Business Machines "Betty"

Glee Club

PET EXPRESSION: "God bless her."

HOBBY: Bowling

*"Enhancing light hair and a cute blush. Betty's
big blue eyes reflect a magnetic personality."*



Bessie M. Griffith

411 North 5th Street
Newark, New Jersey

Business Machines "Bess"

Auditorium, Recreation Committee,
Treasurer of Senior Homeroom

*"If she can make her James happy,
all her wishes will be fulfilled."*





Juanita Jordan

201-03 Prince Street
Newark, New Jersey

Business Machines "Deka"

Glee Club, Dramatic Club

PET EXPRESSION: "I'll dig you later."

HOBBY: Reading

"Her presence brings joy, her face brings a smile."

Concetta Meola

26 Columbus Avenue
Belleville, New Jersey

Business Machines "Etta"

Glee Club, Publicity Committee,
President of Senior Homeroom

PET EXPRESSION: "Egad-Zaoks."

HOBBY: Swimming

*"Personality plus describes our Etta,
most popular with all and ever smiling,
always dressed to perfection."*



Dorothy Minor

28 Avon Place
Newark, New Jersey

Business Machines "Peggy"

Glee Club

PET EXPRESSION: "Oh shut up."

HOBBY: Knitting

*"Happy am I, from care I'm free!
Why aren't all contented like me?"*



Julia Morgan

66 Barclay Street
Newark, New Jersey

Business Machines "Sweetface"

Dramatic Club, Glee Club, Recreation Committee,
Yearbook Staff

PET EXPRESSION: "Everybody just ain't able."

HOBBY: Collecting pictures.

*"Neat with manners ever so fine,
petite and also clever."*



Louise Nichols

1925 McCarter Highway
Newark, New Jersey

Business Machines "Lou"

Glee Club, Dramatic Club

PET EXPRESSION: "Never again."

HOBBY: Dancing

*"Five foot two eyes of blue, cute
as a button from head to toe. Sweet
and petite and trim and neat."*

Judith Ann O'Boyle

84 South 8th Street
Newark, New Jersey

Business Machines "Judy"

Publicity Committee, Class President,
Class Vice-President, Glee Club, Yearbook Staff

PET EXPRESSION: "Is that a fact?"

HOBBY: Swimming, Photography

*"With winning ways and heart of gold,
all her charms are yet to unfold."*





Business Machines "Vee"

Glee Club, Dramatic Club, Cafeteria Committee,
Treasurer of Freshman Homeroom

PET EXPRESSION: "Don't be a square, Jim."

HOBBY: Dancing

"It's nice to be natural when your naturally nice."

Deanna Slader

69 Edgar Place
Nutley, New Jersey

Business Machines "Dea"

Assistant Business Manager of Yearbook Staff

PET EXPRESSION: "You don't say."

HOBBY: Needle work

*"Full of mirth and laughter,
always up to mischief too."*



Barbara Jane Thompson

13 Hunter Street
Newark, New Jersey

Business Machines "B.J."

Safety Committee, Auditorium Committee, Glee Club

PET EXPRESSION: "That's a good one."

HOBBY: Photography

"Where there is a will there is a way."



Lee Veneziano

630 North 6th Street
Newark, New Jersey

Business Machines "Lee"

PET EXPRESSION: "I'll harm you."

HOBBY: Roller skating

*"Always laughing and very gay,
Lee goes on her merry way."*



Brenda Zinn

86 Hawthorne Avenue
Newark, New Jersey

Business Machines "Brenda"

Safety Committee, Cheerleading,
Dramatic Club, Glee Club

HOBBY: Swimming

*"Where the anchors that faith has cast are
dragging in the gale, I am quietly holding
fast to the things that cannot fail."*





Advertising
Design



from
classroom
to career
can be easy



Commercial Art is one of the truly spell-binding fields, casting a glow of glamour on all of us lucky enough to enter the magic portals.

Virginia Baldante

257 Lake Street
Newark, New Jersey

Commercial Art "Ginny"

Treasurer of Senior Class, Glee Club,
Yearbook Staff

HOBBY: Horseback riding

*"A sparkling eye, a lighted step,
A girl with a smile, and lots of pep."*



Frances Schaeffer

632 Valley Street
Orange, New Jersey

Commercial Art "Fran"

Vice-President of Homeroom, Dramatic Club,
Yearbook Staff

PET EXPRESSION: "She always does that."

HOBBY: Collecting pictures of Marlon Brando

*"A cute little miss, just five foot two,
A heavenly gift, with eyes of blue."*

Concetta Squillaro

473 South 12th Street
Newark, New Jersey

Commercial Art "Connie"

Secretary of Homeroom, Recreation Committee,
Yearbook Staff

PET EXPRESSION: "I don't know."

HOBBY: Trading cards

*"She looks like an angel, and acts like one too,
but you never can tell what an angel will do."*





Carmella Vizzone

248 North 15th Street
Bloomfield, New Jersey

Commercial Art "C"

Glee Club, Recreation Committee,
Yearbook Staff

PET EXPRESSION: "Ooh how nervous."

HOBBY: Painting

*"Lil' Angel, five feet one,
always singing, full of fun."*

Lucy Wise

One Mulberry Arcade
Newark, New Jersey

Commercial Art "Jinx"

Recreation Committee, Glee Club,
Yearbook Staff

PET EXPRESSION: "Precisely."

HOBBY: Collecting fashions

*"Rolling eyes, full of fun.
That's our Lucy wrapped in one."*



from
classroom
to couturiere

D
dressmaking
esign



Fashion is one of the great and glamour-
ous industries of our nation.



Frances Cicalese

466 Chancellor Avenue
Newark, New Jersey

Dressmaking "Little Fran"

Glee Club, Recreation, Bookworms,
Dramatic Club, Cafeteria

PET EXPRESSION: "It's out of this world."

HOBBY: Ice skating

*"Her personality can't be beat,
Having her around is sure a treat."*

Rose Marie Colangelo

217 Hunterdon Street
Newark, New Jersey

Dressmaking "Rosie"

Dramatic Club, Publicity Committee

PET EXPRESSION: "Sugar."

HOBBY: Sewing

*"A sweet little miss, just five feet tall,
A precious gift meant for us all."*



Ann DeLorenzi

79 Bleeker Street
Newark, New Jersey

Dressmaking "Annie"

Dramatic Club, Publicity Committee

PET EXPRESSION: "It's a shame."

HOBBY: Sewing

*"Full of fun and mischief, too,
She has the charm possessed by few."*

J. Dolores Giglio

53 Oakland Street
Irvington, New Jersey

Dressmaking "Dee"

Publicity Committee

PET EXPRESSION: "Oh, Bologna."

HOBBY: Playing the piano

*"She is wise, but not so tall,
Precious things are often small."*



Barbara James

202½ Sherman Avenue
Newark, New Jersey

Dressmaking "Bobbie"

Glee Club, Cafeteria, Treasurer of Homeroom

PET EXPRESSION: "Hi-Hi."

HOBBY: Music

*"Laughing and talking all the day,
Always has something nice to say."*

Marguerite Jenkins

61 11th Avenue
Newark, New Jersey

Dressmaking "Marg"

President of Senior Homeroom, Yearbook Staff,
Treasurer of Student Council

PET EXPRESSION: "Beat it."

HOBBY: Dancing

*"Rolling eyes full of fun,
That's our Marge, wrapped in one."*





Bette Massenzio

234 3rd Street
Newark, New Jersey

Dressmaking "Tootie Roll"

President of Senior Class, Bookworms,
Secretary of Student Council, Secretary of Homeroom,
President of Publicity Committee

PET EXPRESSION: "All righty."

HOBBY: Sewing

*"A friendly, spirited, ambitious girl is she,
She'll be successful with her personality."*

Louise Montebello

46 Hornblower Avenue
Belleville, New Jersey

Dressmaking "Lou"

Publicity, Auditorium, President of Homeroom,
Dramatic Club

PET EXPRESSION: "It's the most to say the least."

HOBBY: Dancing

*"A quiet taste, a steadfast mind,
Appearance neat, and manners kind."*



Roberta Moses

100 South 14th Street
Newark, New Jersey

Dressmaking "Nit"

Glee Club

PET EXPRESSION: "Lotty dotty everybody."

HOBBY: Dancing

*"Sparkling eyes, a lighted step,
A girl with a smile, and lots of pep."*



Lola Jane Motley

70 Newark Street
Newark, New Jersey

Dressmaking

Glee Club

PET EXPRESSION: "Excuse me."

HOBBY: Reading

*"Capable, clever, and gay,
An all around girl in every way."*





Elaine Rupinski

440 Thomas Avenue
Lyndhurst, New Jersey

Dressmaking "E"

Yearbook Staff

PET EXPRESSION: "You don't like it."

HOBBY: Skating

*"All life is an experiment.
The more experiments you make the better."*

Angela Tobia

572 North 11th Street
Newark, New Jersey

Dressmaking "Ang"

Assistant Editor of Yearbook, Glee Club,
Publicity Committee, Secretary of Freshman,
Sophomore, Junior, and Senior Homeroom

PET EXPRESSION: "Oh, how nervous."

HOBBY: Sewing

*"Small in size with sparkling eyes,
That brings forth light, and makes the
darkest places bright."*



Marie Van Beke

76 Hoyt Street
Newark, New Jersey

Dressmaking "Rere"

Glee Club, Safety, Bookworms,
Dramatic Club, Recreation

PET EXPRESSION: "What's the matter with you?"

HOBBY: Ice skating

*"She is gentle, she is wise,
She has mischief in her eyes."*





Technical
Secretary

modern merica
is a technical merica



Today, more than any other era in our history, technical knowledge is at a premium. The Technical Secretary is the engineer's "girl Friday."



Amelita Barra

652 North 7th Street
Newark, New Jersey

Technical Secretary "Amy"

Auditorium Committee

PET EXPRESSION: "Oh, you don't say."

HOBBY: Collecting records

*"A quiet taste, a steadfast mind,
Appearance neat and manners kind."*

Marie Battista

112 Garside Avenue
Newark, New Jersey

Technical Secretary "M"

PET EXPRESSION: "Oh, that's different."

HOBBY: Drawing

*"Don't be fooled by Angel's eyes,
'Cause that is where the mischief lies."*



Theresa Burns

670 Bergen Street
Newark, New Jersey

Technical Secretary "Terry"

Bookworms, Safety Committee, Cheerleader

PET EXPRESSION: "Don't aggravate me."

HOBBY: Dancing and Ray

*"By her hair you shall know her,
By her wit you shall love her."*



Nancy Chris

257 Emmet Street
Newark, New Jersey

Technical Secretary "Nan"

President of Homeroom, Glee Club, Yearbook Staff

PET EXPRESSION: "You're buggin' out."

HOBBY: Roller skating

*"A willing heart, a helping hand,
A nicer girl you couldn't find."*



Marilyn DeVore

492 Orange Street
Newark, New Jersey

Technical Secretary "Muffin"

Yearbook Staff, Secretary of Publicity Committee,
Glee Club

PET EXPRESSION: "Oh, what a shame!"

HOBBY: Records, memory scrapbooks

*"If she possesses any faults, they are
overshadowed by her good qualities."*



Margaret Finan

107 Summit Street
Newark, New Jersey

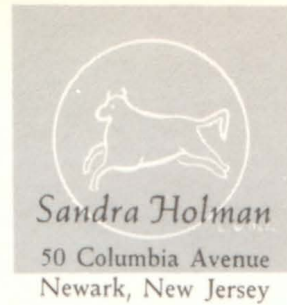
Technical Secretary "Margie"

Secretary of Senior Class, Safety, Cheerleader

PET EXPRESSION: "How nervous."

HOBBY: Dancing

*"Her sweet ways have won her many friends,
And will win her many more."*



Technical Secretary "Sandy"

Safety Committee

PET EXPRESSION: "I didn't know."

HOBBY: Painting

*"It's nice to be natural,
When you're naturally nice."*

Susanna Katzenberger

757 South 16th Street
Newark, New Jersey

Technical Secretary "Susie"

Senior Treasurer of Homeroom,
Junior Secretary of Homeroom

PET EXPRESSION: "You're kiddin'."

HOBBY: Ice skating

"A thing of beauty is a joy forever."



Veronica Kennedy

72 Wakeman Avenue
Newark, New Jersey

Technical Secretary "Ronnie"

PET EXPRESSION: "What hit ya."

HOBBY: Roller skating

*"She looks like an Angel, and acts like one too,
But you never can tell what an Angel will do."*





Josephine Kukoy

249 16th Avenue

Newark, New Jersey

Technical Secretary "Jo"

Glee Club, Treasurer of Junior Homeroom

PET EXPRESSION: "You know it."

*"Come, let's joke and make merry,
I have no time for weep and worry."*



Jane Ellen Kurtz

2 North 6th Street

Newark, New Jersey

Technical Secretary "Janie"

Business Manager of Yearbook Staff, Safety,
Dramatic Club, Bookworms, Cheerleader

PET EXPRESSION: "It's a sin."

HOBBY: Dancing, Tommy

*"A smile is a passport to a friend,
A laugh is sunshine in a gloomy world."*



Mary Kukoy

249 16th Avenue

Newark, New Jersey

Technical Secretary "Mimi"

President of Bookworms, Glee Club, Safety,
Yearbook Staff, President of Sophomore Homeroom

PET EXPRESSION: "I'm not going steady."

HOBBY: Knitting

*"A smile on her lips,
And a song in her heart."*



Marjorie Langford

12 East Alpine Street
Newark, New Jersey

Technical Secretary "Marge"

Editor-in-chief of Yearbook, Secretary of Homeroom,
Glee Club, Bookworms, Safety, Dramatic Club,
Vice-President of Sophomore Homeroom

PET EXPRESSION: "Honestly."

HOBBY: Records, dancing

*"What more can one ask for, than charm,
cleverness, and a lovely personality."*

Eleanor Lipscomb

80 Hayes Street
Newark, New Jersey

Technical Secretary "Lips-ô-comb"

Yearbook Staff, Glee Club, Cafeteria, Cheerleader

PET EXPRESSION: "Holy Mackerel."

*"She looks like an Angel, and acts like one too,
But you never can tell what an Angel will do."*



Geraldine Lorenzetti

479 North 6th Street
Newark, New Jersey

Technical Secretary "Gerrie"

Glee Club, Auditorium Committee,
Cafeteria Committee

PET EXPRESSION: "No kiddin'."

*"A sweet girl, a fast mind,
Very few like her shall we find."*

Joanne Marlewicz

568 South 18th Street
Newark, New Jersey

Technical Secretary "Jo"
Dramatic Club

HOBBY: Crocheting, skating

*"Her pleasing personality will
continue to make others happy."*



Barbara Mendola

527 North 5th Street
Newark, New Jersey

Technical Secretary "Bobbi"
Cheerleader, Cafeteria, Recreation

PET EXPRESSION: "Why-y-y-y."

*"She's charming, sweet, and very neat,
With a personality hard to beat."*

Evelyn Melillo

590 North 4th Street
Newark, New Jersey

Technical Secretary "Ev"
President of Bookworms, Cheerleader,
Safety, Recreation, Cafeteria

PET EXPRESSION: "Oh, boy."

*"A sparkling eye, a lighted step,
A girl with a smile, and lots of pep."*





204 North 2nd Street
Newark, New Jersey

Technical Secretary "Connie"
Secretary of Homeroom, Cheerleader
PET EXPRESSION: "All righty."

*"A quiet taste, a steadfast mind,
Appearance neat, and manners kind."*

Patricia O'Connell

72 North 2nd Street
Newark, New Jersey

Technical Secretary "Pat"
Yearbook Staff, Dramatic Club,
Vice-President of Homeroom

PET EXPRESSION: "What a shame."

*"Big brown eyes and loads of fun,
Our Pat is liked by everyone."*



Ethel Ponyman

1048 Grove Street
Irvington, New Jersey

Technical Secretary "Eddie"
Yearbook Staff, Glee Club, Cheerleader

PET EXPRESSION: "Are you kidding?"
HOBBY: Horseback riding

*"Happy am I, from care I'm free.
Why aren't all contented like me?"*



Geraldine Santaniello

61 Nichols Street
Newark, New Jersey

Technical Secretary "Geri"
Bookworms, Cheerleader, Housekeeping

PET EXPRESSION: "Is that for real?"

*"A pixie smile, a devilish eye,
A joyful laugh and never a sigh."*



Frances Santumo

39 Hecker Street
Newark, New Jersey

Technical Secretary "Fran"
Assistant Treasurer of Student Council,
Dramatic Club, Safety

PET EXPRESSION: "I'll give you a couple of slaps."

HOBBY: Dancing, Tony

*"While she and Tony are apart,
Fran is faithfully saving her heart."*



Lorraine Shilinski

764 Hunterdon Street
Newark, New Jersey

Technical Secretary "Lorrie"

PET EXPRESSION: "It was all right."

HOBBY: Records

*"She looks ahead, moves ahead, has a head,
A successful future is in store for her."*





Joan Sluboski

49 Park Terrace
West Orange, New Jersey

Technical Secretary "Joni"
Glee Club, Cheerleader, Cafeteria Committee

PET EXPRESSION: "What a doll."

*"Laughing eyes, cute and sweet,
With a dimpled smile that can't be beat."*

Virginia Slusser

54 Wellesley Street
Maplewood, New Jersey

Technical Secretary "Ginny"
Auditorium Committee, Glee Club

PET EXPRESSION: "Ye-Gad."
HOBBY: Horseback riding

*"A continuous stream of chatter,
With an irresistible chuckle."*



Kathleen Wenzel

894 Lake Street
Newark, New Jersey

Technical Secretary "Kate"

PET EXPRESSION: "Honest to goodness."
HOBBY: Records, photography

*"True merit like a river,
The deeper it is, the less noise it makes."*





Food
Service

for your future . . .
food for thought

Every girl likes a party and is anxious to know the essentials of entertaining. Learning to cater and to set a beautiful table are two interesting phases of Food Service.



599½ North 3rd Street
Newark, New Jersey

Food Service "Ann"

Secretary of Homeroom Class

PET EXPRESSION: "Not living."

"Witty, lively, and full of fun."

Ervina Gold

110½ Ninth Avenue
Newark, New Jersey

Food Service "Bebe"

Auditorium Committee

"Nearer the bone, sweeter the meat."



Marilyn Frances Samhammer

28 South 10th Street
Newark, New Jersey

Food Service "Lynn"

President of Homeroom

PET EXPRESSION: "You know it too."

"A smile on her lips and a song in her heart."



Mary Ann Settele

162 Sherman Avenue
Newark, New Jersey

Food Service "Sleepy"

Yearbook Staff

"Pie crust and promises were made to be broken."



Ruby Silas

94 Peabody Place
Newark, New Jersey

Food Service "Gill"

Yearbook Staff

"She's small, she's wise, a terror for her size."





L. O'NEILL

The Galaxy of 1955 Surrender

Teacher and pupil relationship is one of the fundamental principles of successful teaching. Members of the Class of '55 have been more than fortunate in this respect. To most of us the faculty has served as adviser as well as teacher. We consider each of them a friend. All of us, at one time or another, have had a problem to solve. They have always been ready and willing to help us with our difficulties. Our problems have been their problems, and none were too large or too small to merit their closest attention. They have successfully guided us up the "Stairway to the Stars." Our thanks and deepest appreciation.

We as a class have accumulated a goodly fortune, and feel that our allotted time here is nearing an end, and because of our high esteem for you, the Faculty, do make, publish, and declare this to be our last will and testament.

- To Mrs. Richardson, we leave our sincere best wishes.
To Mrs. Dunham, our thanks.
To Mrs. Adams, we leave girls to practice cold waving.
To Miss Applegate, a good assistant.
To Mrs. Burnett, we leave a new Glee Club with plenty of second sopranos.
To Miss Cavallo, all unfinished book reports.
We leave Mrs. Colyer shutting off the water.
To Miss Darnaley, unbreakable test tubes.
To Mrs. DeMarco, long technical names.
To Mrs. Dutton, we leave a half dozen combs, so that the girls may comb their hair in class.
We bequeath a bottle of iodine to Miss Edmison.
To Mrs. Fairchild, a new method of tying a Tour-niquet.
To the Freshmen, our deepest sympathy.
To Miss Fitchett, we leave good student nurses.
We leave Mrs. Gardner an addition to the Chase family.
To Miss Hodgins, colored pencils for her good students.
We leave Mrs. Hyland, girls with short hair.
To Mrs. Jordan, we leave fond memories of her dog.
To the Juniors, luck with the prom.
We leave Mrs. Lehman, a quiet subtle class.
To Mr. Leith, an unbreakable record saying, "All books off the desk."
To Mrs. Mack, we bequeath an automatic filing system.
- To Miss McAfee, a playmate for her Siamese cat.
We leave Mrs. Mullis, girls with clean shoes.
To Miss Norton, just one sheet of paper.
To Mrs. Nixon, we leave a steel cabinet to store pocket books.
To Mrs. Owens, good citizens.
We leave Miss O'Toole, new patterns.
We bequeath Miss Parsil, good cashiers.
To Mrs. Pennington, her cheery greeting.
To Miss Reilly, we leave the back room empty.
To Miss Roberts, memories of her beautiful voice.
We leave Miss Rossman, a years' supply of erasers.
Miss Schaeffer, we leave you a fool proof method of forgetting old Gregg Shorthand.
We leave Mr. Stanziale, safe roads and highways.
To Miss Skuratofsky, lots of homework.
To the Sophomores, success in their chosen courses.
We leave Miss Taczy, all the film strips she has never shown.
To Mrs. Trinks, all the lost scissors.
To Mrs. Van Nest, we leave you an extra supply of cookies.
We leave Dr. Vance the whole school to examine.
To Miss Veenstra, a new deck of canasta cards.
We leave Mrs. Warrick filing it down to the third letter.
To Miss Whitney, our sincere gratitude for making our yearbook a success.
We leave Miss Wood, many more bookworms.
To Mrs. Wood, girls with long hair.
And last but not least, to the whole school our fondest memories.

Sworn and subscribed to on this twenty-first day of June in the year of our Lord One Thousand Nine hundred and fifty-five.

CLASS OF 1955

Witnessed by
ETHEL PONYMAN

Signed
GALAXY, 1955

A Gala Occasion

Last May the gymnasium was transformed into a "Luxury Liner", complete with anchors, miniature masks for table centerpieces, and all the beautiful things that make a Luxury Liner luxurious, for the annual Junior Prom. The theme was supplemented by Al Clothier's Orchestra who played dreamy music for dancing.

We had been looking forward to the big event since we were Freshmen, and most of us thought the night would never come. Such a tizzy with the last minute preparation, getting a special hair-do, high heeled shoes, formal frocks, and evening bags. What nervous minutes that seemed like hours waiting for our escorts to come, but oh what a thrill when they arrived with flowers to make the evening complete.

It was a wonderful experience. Just like a dream come true with its flowers, palms, pretty girls, good looking boys, and everything which goes to make a perfect evening. We can truly say that it was well worth waiting for.

Our sincere thanks to Mrs. Wood, and Miss Hodgins, for their inspiration and help.



Exploring The

During our long climb up the Stairway to the Stars, we occasionally found time for adventure and diversion. One of such occasions was the trip to the United Nations.

Two busloads of the eager "Galaxy", under the careful eye of Mrs. Owens and Mrs. Cook, arrived at our destination, the United Nations. The buildings are located along Manhattan's East River, north of 42nd Street on a site donated by John D. Rockefeller, Jr., in 1947.

As we came up the walk at the front of the building, we were amazed at the many different flags representing the different members of the United Nations. The architecture of the structure of the building as we entered the lobby was a beautiful sight to see.

Because of the size of the group, we were divided into groups A and B. We attended several different meetings among which were the Economic and Social Council, Atomic Energy, Trusteeship Council, and Security Council. There were interesting discussions going on at all of these meetings, and we were all disappointed to learn that there was no meeting in the General Assembly Room.

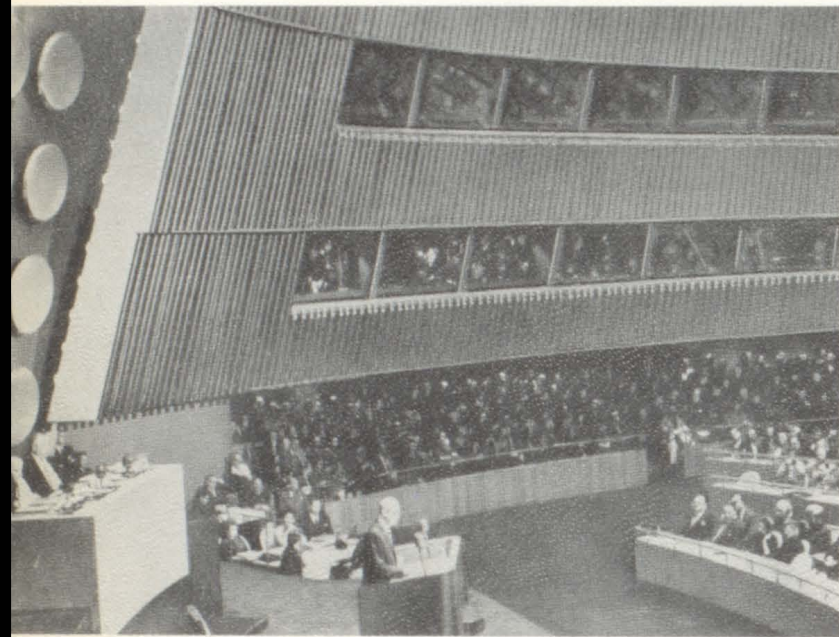
This room is the most beautiful. It is the room where all big decisions are made. Unlike the other organizations, there are five delegates from each country, but only one vote is given to each. Most of us were content to stay and drink in the beauty, but energy was fading, and lunch was calling.

The group met in the lobby for briefing, and we changed our course temporarily for the Cafe De Beaux Arts. We had a wonderful lunch, a pleasant "chit chat", and time to take pictures of the oh, so many sights to see.

After arriving back, we were given a guided tour of the building. Our guide was Indian, and most of us would have been content just to hear her talk. We were taken to the different rooms and given the background and purposes, shown a small model of the layout of the United Nations grounds, the lobby of the Secretariat Building, a pond contributed by the Children of the World, and a beautiful painting by the Spanish artist, Vela Zanette, illustrating how tools for war could also be used for peace.

The group visited the Meditation Room unattended. We were surprised at its simplicity, but realized that it must be, because of the fact that many different religions are represented. I think everyone uttered a silent prayer for peace.

Finally, the time came to sign the guest book, and you may be sure that we gave favorable comments.



Planets

After careful planning, selecting and packing of clothes, last minute advice, the senior class was assembled at Penn Station anxiously awaiting the train to Washington, D. C. We were accompanied by two of our capable teachers, Miss Dearnaley and Miss O'Toole. This was the day, Tuesday, May 18, of the exciting three day trip we had been looking forward to for four years.

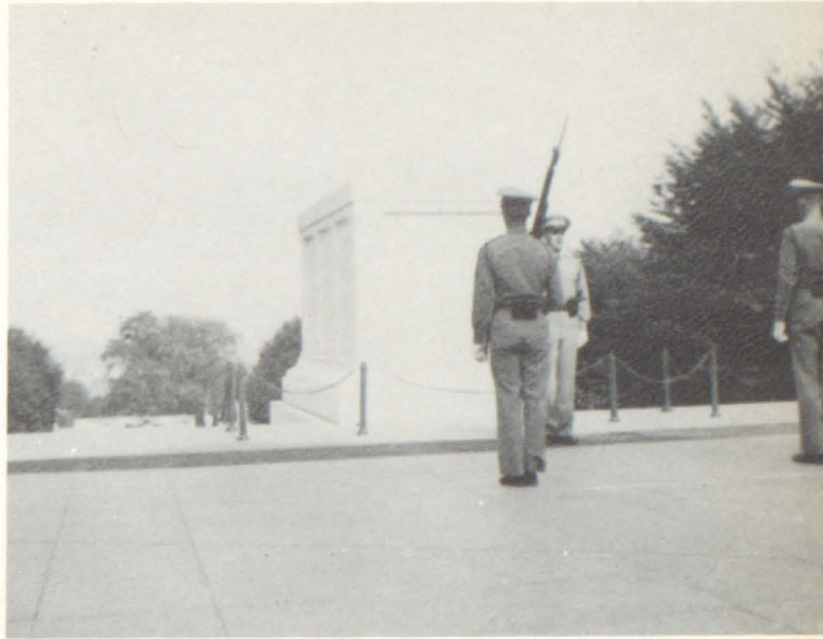
At 11:35 a.m., we arrived at Baltimore, Maryland, where our Monumental Tour bus and driver were waiting for us. As is usually the case, our driver knew the area thoroughly and was able to make our trip more interesting by telling us little incidents connected with the history of Maryland and Washington.

Our first stop was Fort McHenry, the birthplace of "The Star-Spangled Banner." We then went to Annapolis, Maryland, where a tour of the United States Naval Academy was made. Unfortunately we missed the opportunity of seeing the midshipmen, for they were having their mid-term examinations; but the grounds and the buildings were beautiful and we enjoyed ourselves anyway. Our next stop was the Franciscan Monastery, the Memorial Church of the Holy Land. This was very lovely and the gardens were in full bloom making it more so.

We arrived at the hotel on schedule and four girls were assigned to each room with bath. After we were settled and had dinner, we were off to see the city of Washington at night. The spectacle of the lighted dome of the Capitol is something we shall long remember.

Early the next morning, our group (weary from lack of sleep) arose and had breakfast. The first place we visited was the Bureau of Engraving, where our paper money, postage, and bonds are printed, then on to Washington Monument; Pan-American Building; Department of Justice (F.B.I.); White House; Capitol; Library of Congress; Jefferson and Lincoln Memorials; Mt. Vernon; and the Tomb of the Unknown soldier in Arlington Cemetery.

On Thursday, 6:00 p.m., armed with souvenirs and happy memories, we reluctantly boarded the train. We were served a delicious dinner. The souvenir menus were made especially for us, to help us remember the wonderful and inspiring time the Senior Class of Essex High had in Washington.





Most Friendly
Most Popular
MARGUERITE JENKINS



Best All-around
JOAN GESIOR



Best Dancer
JOAN D'ALESSIO



Most Respected
JANET LEE



Class Wit
PATRICIA CHAMBERS



Most Attractive
FLORENCE DI CHIARA

**Brightest
Stars**





Little Dipper

You have sampled democracy in action. You have sampled service to others. Through the many opportunities offered you by the Student Council, we hope we have aroused in you a spark of desire to continue to spread this spirit in your communities. For only by such means can you obtain the complete happiness and success we wish for you.

Mrs. Theresa Guth
 Carol Schwartz
 Barbara Ann Fabiano
 Barbara Witt
 Linda Gizzi
 Jacqueline Companion
 Bette Massenzio
 Arlene Musto
 Janet Lee

Carol Trautner
 Norma Carpinello
 Frances Santumo
 Elaine Freifeld
 June Russomanno
 Jeanette Antonczak
 Rosemary Scocozza
 Aphrodite Anagnostos
 Josephine Di Como
 Roseanne Montesano

Kathleen Galasso
 Jeanette Hanna
 Etta Meola
 Nancy Chris
 Louise Montebello
 Joan Chapman
 Virginia Baldante
 Carol Kinney
 Barbara Mason

Little Dipper Officers



JANET LEE
President



ARLENE MUSTO
First Vice-President



CAROL TRAUTNER
Second Vice-President



BETTE MASSENZIO
Secretary



NORMA CARPINELLO
Treasurer



FRANCES SANTUMO
Assistant Treasurer

Star Gazers



CAFETERIA



HOUSEKEEPING



SAFETY



PUBLICITY



RECREATION

*The Queen Of
The Galaxy*



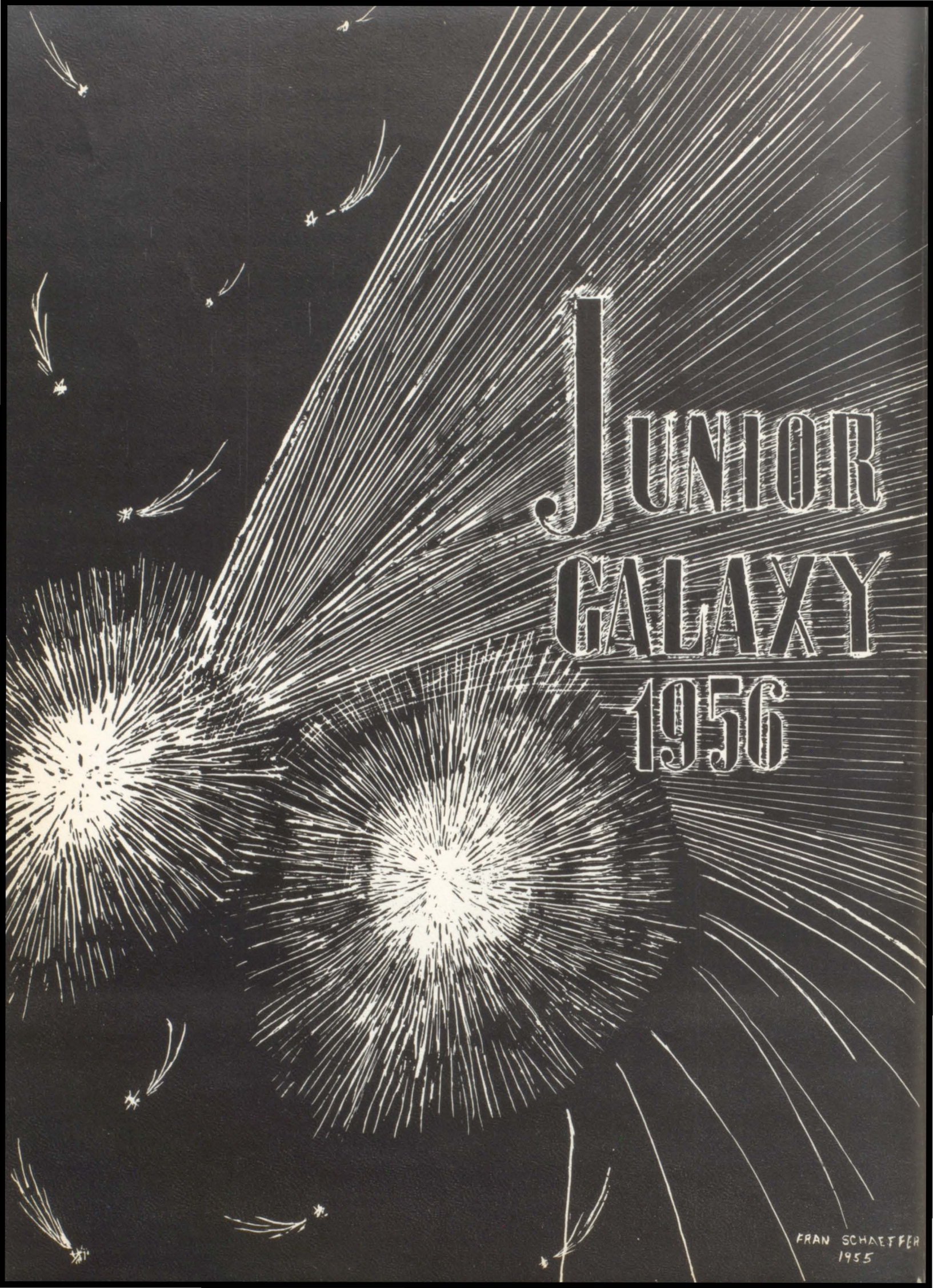
KING AND QUEEN



ATTENDANTS



KING, QUEEN, ATTENDANTS,
AND ESCORTS



JUNIOR
GALAXY
1956

FRAN SCHAEFFER
1955



Galaxy Council—1956

VIOLA DEL GUERCIO

ANNETTE CERRATO

JANE SOTHERN

MARIE LA ROCCA

JEANETTE ANTONCZAK

CAROL SIMPSON

Janice
Allen

Jean
Anderson

Jeanette
Antonczak

Anna Marie
Bardi

Eleanore
Bauer

Helen
Branin

Carol
Cantella

Annette
Cerrato

Stella
Chayka

Patricia
Christiano

Raffaele
Cicalese

Annette
Ciccone

Carol
Crispin

Viola
Del Guercio

Filomena
Deo

Marie
De Pasquale

Gloria
D'Agostino





Marie
D'Angelantonio

Mary Ann
Di Bernardo

Carmella
Fazzari

Rosemarie
Fazzari

Loretta
Fernandes

Margaret
Fiorello

Rose
Franklin

Elaine
Freifeld

Louise
Gatti

Ann
Germano

Doris
Girgenti

Louise
Girgenti

Frances
Grau

Deloris
Hicks

Ruth
Holland

Madeline
Knorr

Helen
Lahey

Marie
La Rocca

Mary
Macchia

Florence
Macchiello

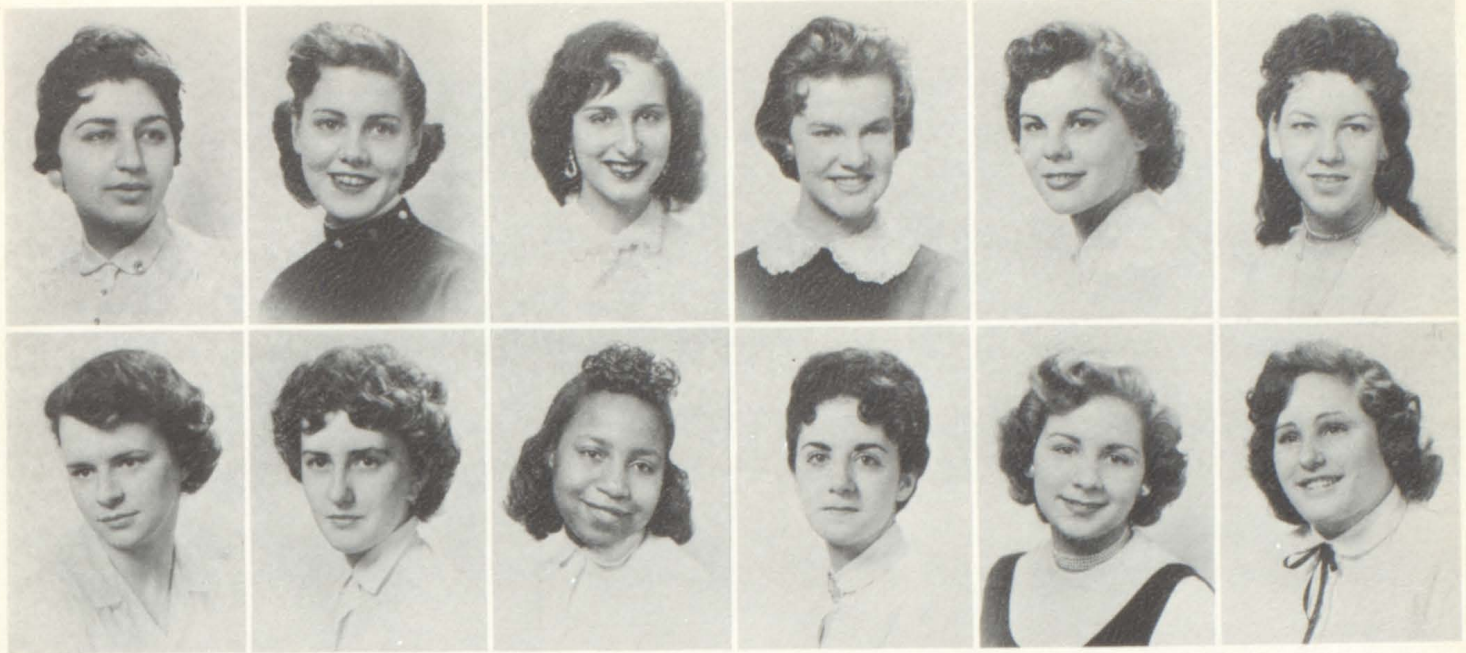
Lorraine
Makinson

Diana
Marchese

Dorothy
Martinez

Rosemary
Miele





Arlene
Musto

Mary
Needham

Rita
Notte

Loretta
O'Neill

Laura
Ostrowski

Vickie
Petolino

Edith
Reed

Marie Jean
Rizzie

Mary
Rogers

June
Russomano

Colleen
Saldino

Victoria
Sanitate

Mary Ann
Sopoligo

Jane
Southern

Dorothy
Simonsen

Grace
Stevenson

Sheila
Tishler

Carol
Trautner

Connie
Valenza

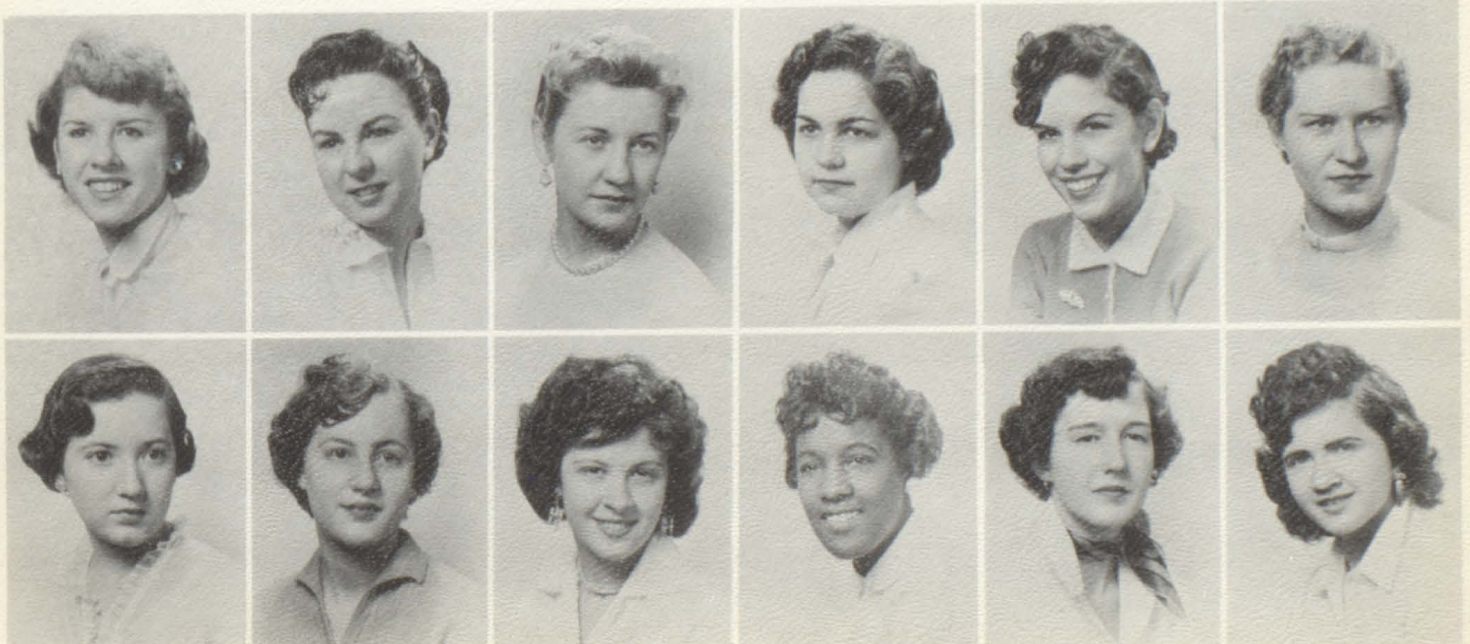
Emma
Valenza

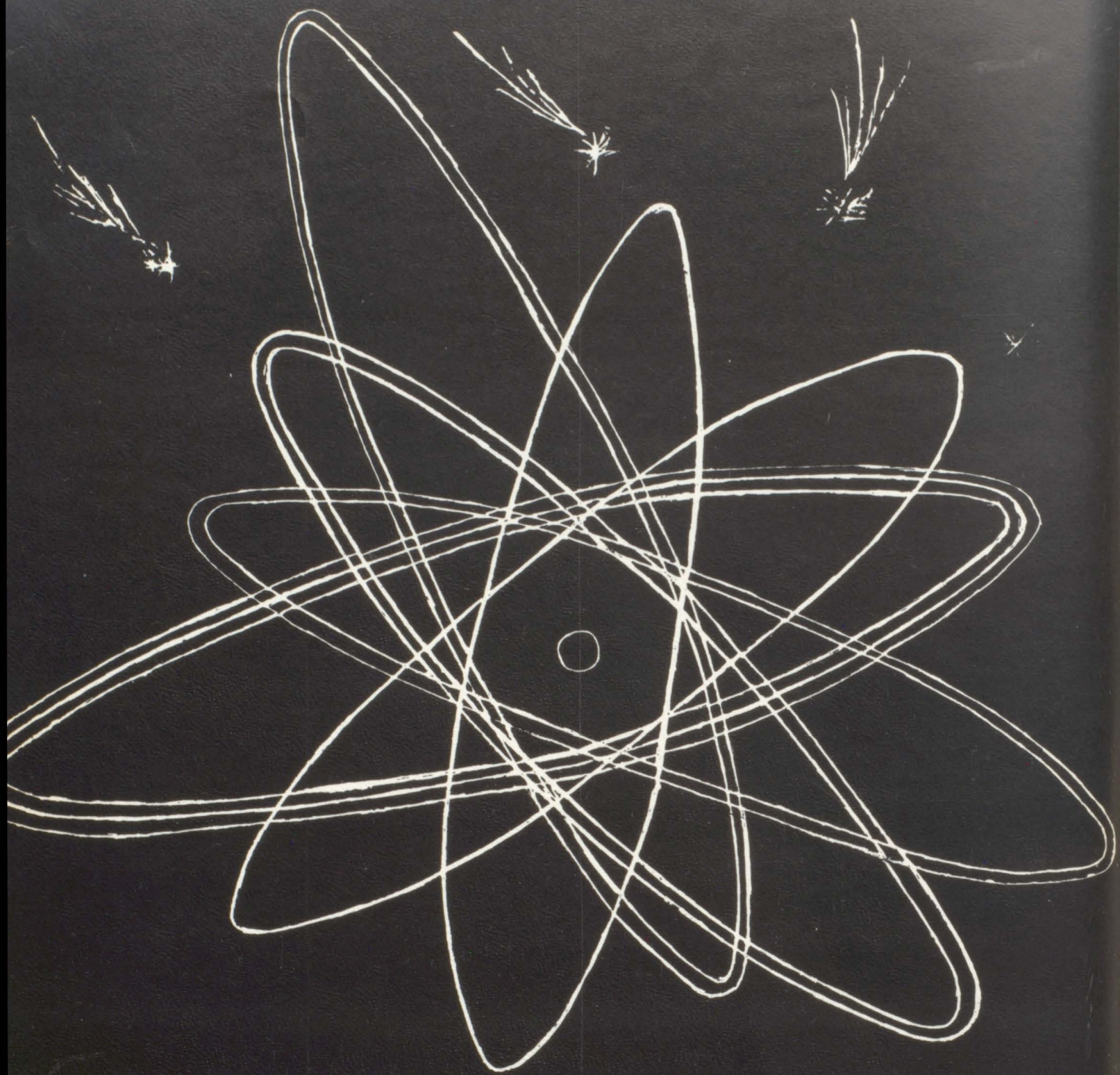
Lorraine
Velardi

Doris
Williams

Anna Mae
Wortman

Florence
Wronowski





SOPHOMORE Galaxy
1957

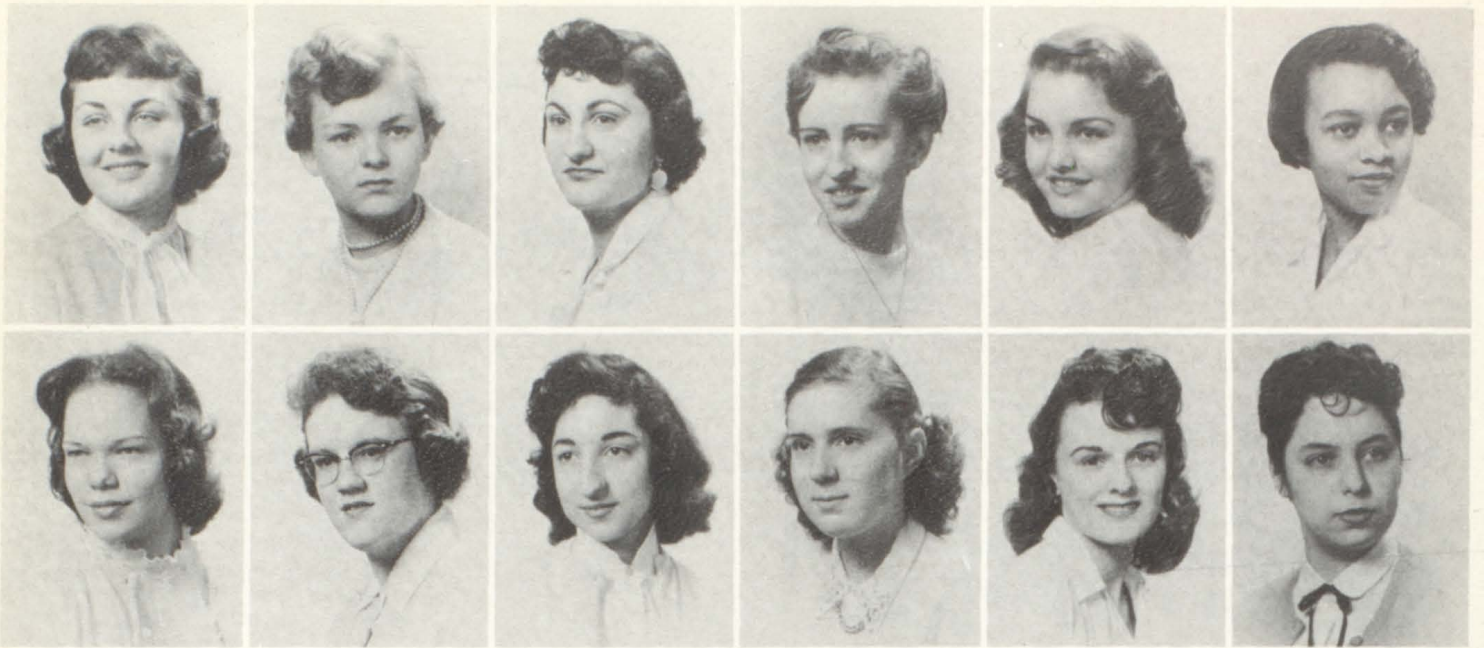
MEL - VIZZONE
1955



Galaxy Council—1957

MARY BIELKO	ROSE MARIE O'HARA	BARBARA FANNING	AGATHA CAVALIERI
LORETTA O'NEILL	ADELE JANNICELLI	CAROL JORGENSEN	RUTH SCHORK
	Aphrodite Anagnostos	Maryann Arcillo	Phyllis Ashton
			Salvatina Battista
Elaine Benenati	Rosemarie Blumenschein	Constance Brady	Joan Carr
Nancy Coppolino	Diane Curcio	'Dorothy Danowski	Delores Del Guercio
			Theresa Durand





Barbara
Fabiano

Jane
Fletcher

Sandra
Genakos

Helen
Handel

Catherine
Iannucci

Marcia
James

Carol
Jorgensen

Lorraine
Kelly

Lenore
La Banco

Christine
Leming

Claire
McFadden

Rosalie
Montebello

Joan
Needham

Muriel
Nungesser

Nettie
Rogers

Helga
Sand

Carol
Schwartz

Rosemary
Scocozza

Joann
Soriano

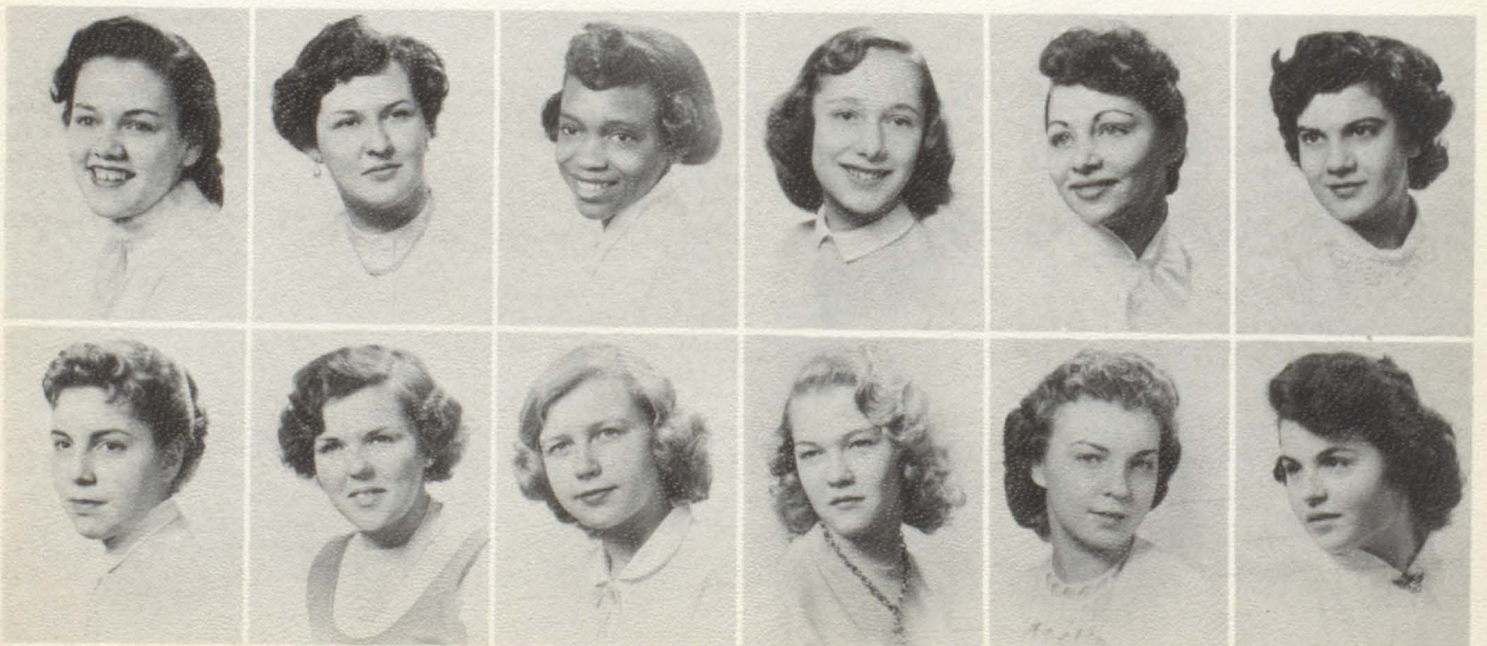
Eileen
Sullivan

Mary
Talocka

Margaret
Walsifer

Barbara
Witt

Mary
Zanghi





Freshman
Galaxy
1958

L. WISE

Galaxy Officers—1958

JEANETTE HANNA

JOSEPHINE DI COMO

ROSANNE MONTESANO

LINDA GIZZI

CAROL KINNEY



Judy Sylvester

Patti Vittoria

Kathleen Smullen

Ann Boehm

Theresa Hower

Antoinette Picillo

Andrea Anderson

Rosalie Bongiovanni

Elaine Slattery

Maryann Castiglione

Antoinette Modestine

Mildred Raines

Anita Bruzzio

Patricia Czuba

Joan Lipscomb

Linda McClain

Jeanette Hanna

Mary Ann McGuire

Marjorie McLeary

Rosemarie Rita

Frances Lucas

Yvonne Nannarello



Geraldine Sposato

Rose Marie Mangione

Dorothy Tartaglia

Frances Ciancualto

Grace Marie Cifelli

Florence Barbosa

Marie Arcaro

Josephine Di Como

Janet Van Oostendorp

Roberta Godfrey

Jean George

Theresa Rozzeca

Mary Wallace

Dina Santos

Phyllis Poch

Angela Gizzo

Veronica Kurtz

Antoinette Barosky

Patricia Weed

Marie D'Angelo

Helen Durham

Joyce Indano

Jeanette Caprio

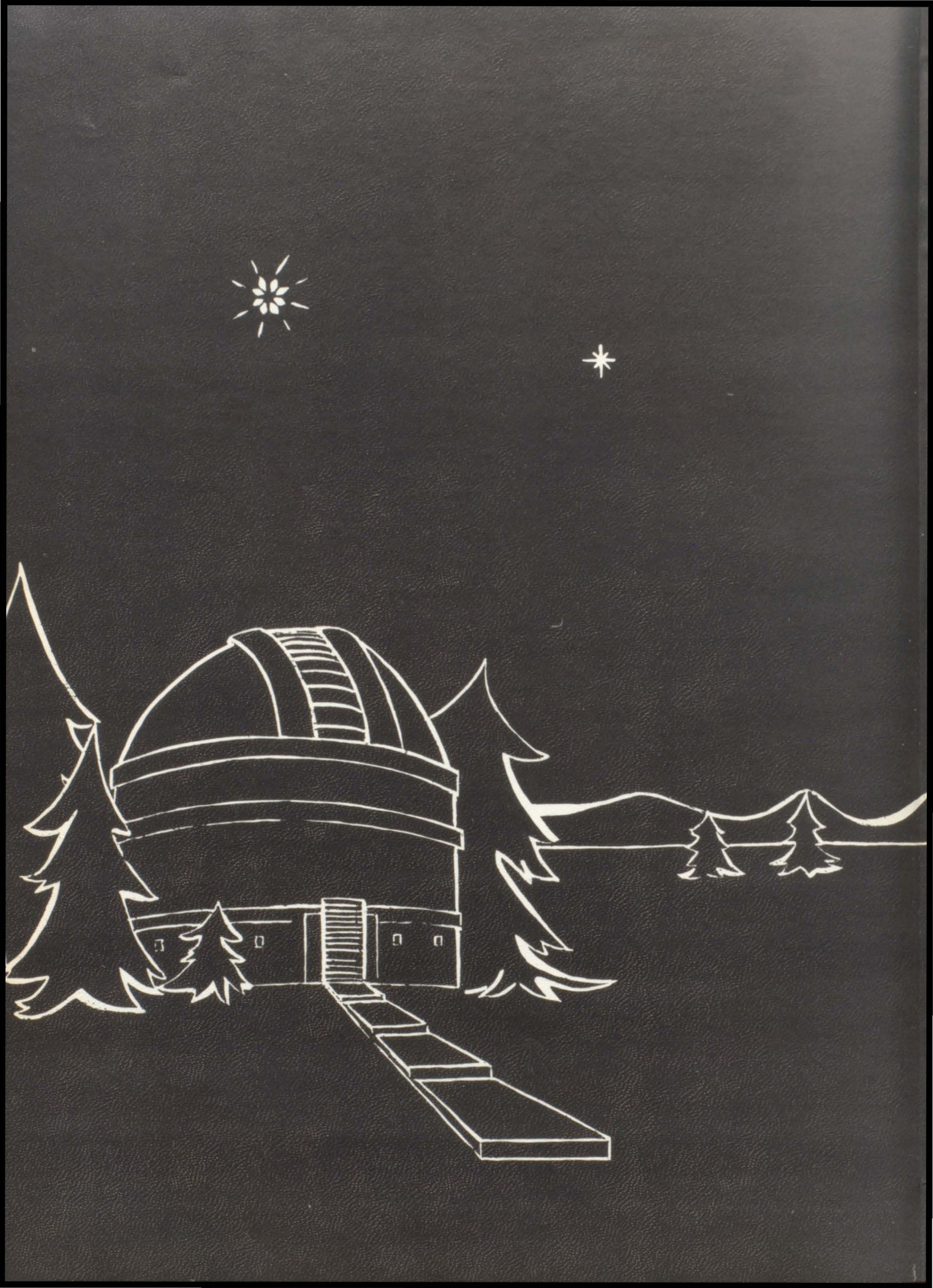
Stella Longo	Concetta De Dolce	Phyllis Marie Napolitano
Theresa Alessio	Virginia Ferlise	Judith Jake
Hazel Baines	Roberta Gerlack	Elaine Terplivetz
Judith Bevere	Adele Contursi	Yvonne Oates
Eula Franklin	Marie D'Eredita	Agnes Lang
Rosanne Montesano	Connie Coppola	Louise Ruggiero
Phyllis Grace Napolitano	Patricia Pellegrino	Geraldine Fulbright
Patricia Peare		Vivien Edwards



Barbara Stankiewicz	Elvira Angeline	Joan Clements
Ann Schaeffer	Linda Gizzi	Carol Edgley
Barbara Black	Mary Ann Romano	Ida Jones
Donna Marie Sudol	Therese Capanear	Joan Petruschak
Priscilla La Page	Antoinette Schrama	Grace McGookin
Cora La Bue	Carmella Politan	Judy Smith
Irene Gaines	Ann Correll	Marie Lang
Phyllis Pastore		Jeanette Alexander

Joan Parker	Josephine Randazzo	Carol Ann Payne
Phyllis Alu	Carol Kinney	Marie Patarino
Margaret Szipszky	Judy Paranzine	Joan Houston
Kate Smith	Barbara Smith	Celeste La Fragola
Ann Newell	Nancy Pettit	Barbara Jean Frey
Susanna De Maio	Annette Nappi	Rosanne Castle
Lucille Baratto	Katherine Speer	Beverly Rosso





HIGHER ASCENT



dental
Assistance

career
in white



"Education, Efficiency, Loyalty, and Service," is the motto of the Dental Assistant.





Dental Assistance

BETTY DUNNE
ARLENE BERKHOFFER
JUDY BRODKIN
MARILYN GOLDSTEIN
BETSY WEBBER
GAIL CALDARO
SHEILA NURIN
PHYLLIS GRALLA
MARLENE SAVAGE
JESSIE GRAY
KATHLEEN BRILLY
ALICE BATES
CHRISTINA MATTHEWS
MARY LOU BACE



Medical
Secretary



where highest
standards are essential . . .



That is when excellent professional training counts. What career could be more exacting and rewarding than that of the Medical Secretary, she is as essential as the doctor's stethoscope.



Medical Secretary

VIVIAN AHERN
LUCILLE ALLEN
VERNA BAUR
MARGUERITE CHADWICK
FLORA DONOVAN
MARY DOUGHERTY
JOANNE DUBIEL
ANN FEDUCK
GLADYS HUDES
HESTER JACOBUS
LENORE KEIGEL
ANN MAULE
CONNIE PEZZINO
DELORES PICCIRILLI
DIANE STANZIONE
CYNTHIA THOROUGHGOOD
BARBARA TUCKER
WILLA WILLIAMS
ROSE WOLKSTEIN



Practical Nursing

Requirements: Two years of High School or the equivalent. Sixteen weeks are spent in the classroom, and thirty-two weeks in various hospitals for clinical experience, which consist of: Medical-Surgical Nursing, Care of Mothers and Newborns, Pediatrics, Convalescent Care, and Psychiatric Nursing.

ELIZABETH ADAMS
 EDNA ANTHONY
 ROSE BASLEY
 ELIZABETH BENDER
 MAMIE BROWN
 IRENE BURSE
 ANNA CALDWELL
 EDITH CALDWELL
 PHYLLIS CARR
 HATTIE CHAMBLISS
 LUCILLE DE CHESER
 MARY DeLUCA
 MARJORY FIELDS
 ROSEMARY FUSCHETTI
 DOROTHY GIBLIN
 LUDIE GRIFFIN
 VIOLA HALL
 ETHEL HENLEY
 LOIS HICKS

MARTHA HINTON
 BEULAH HOLLOWAY
 CLAIR HOWLEY
 MINNIE HUBBARD
 BERNICE HUGHES
 DOROTHY JONES
 BLANCHE KISSELMAN
 VIRGINIA KREMPER
 EUNICE LANGFORD
 DOROTHY LATTA
 INA LEE
 ESSIE McNEIL
 DOROTHY MACKINSON
 BETTY MARTIN
 FRANCES NEMECKAY
 JANIE O'NEAL
 LILLIE OWENS
 MERCIA PARKS
 VIRGINIA PUDER

EVELYN RICHARDS
 LILLIAN SCHMIDT
 URSULA SCHULTZ
 DOLORES SHIPLEY
 MYRTLE SLATEN
 DORIS SMITH
 VIRGINIA STRAUS
 MARIE TAGGERT
 ARLES TAYLOR
 MILDREN THOMAS
 MARJORIE VANDERDECKER
 RUTH WALENTA
 EVA WHITE
 JEAN WILFRED
 CHARLINA WILLIAMS
 IDELLA WILLIAMS
 HATTIE WILLIS
 CATHERINE WOOD
 JANET WRIGHT



Beauty Culture Trade

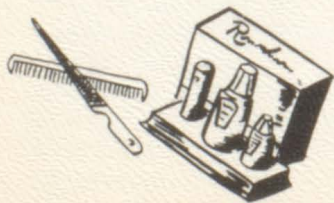
This course covers all phases of beauty culture work and prepares the students to take the State examination for licensure. Opportunities in the field of beauty culture are plentiful.

There is no tuition charge for residents of Essex County.

JOSEPHINE MAIORAN
FRANCES SACCONI
ANN SCHUSTER
JUNE KAZIKOWSKI
JANE WALSH
IDA FRANCO
EILLEN WIEGAND

MARY NEVINS
DOLORES NARDIELLO
LILLIAN PEPPER
THERESA SEFCIK
ANNA MAE DICK
ANN BURNS
LORETTA MOKOID

BARBARA KLIMA



Adult Technical

All members of the Adult Technical group are students who have graduated from high school and are taking a one year post high school course in a specific trade. Pupils may enter this class at any time during the year and prepare to take a job in a specialized field about one year later. Courses offered are: Advertising Design (Commercial Art), Business Machines, Cosmetology and Dress Design.

Business Machines

SHEILA HOROWITZ

GLORIA WESBY

Dress Design

MARY CRAWLEY

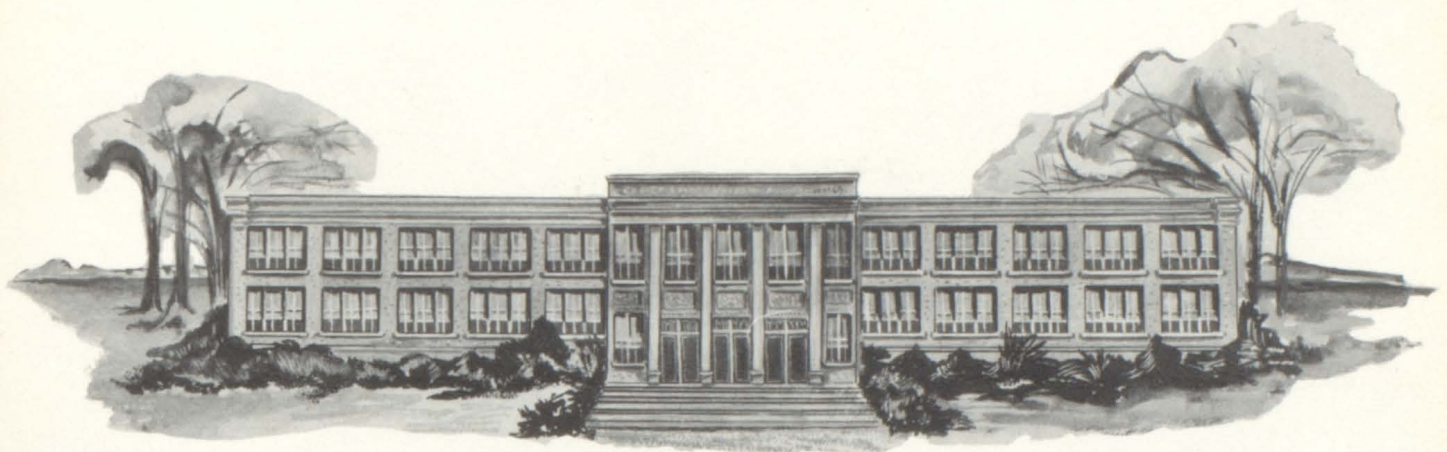
TERESA ZAPULLA

Cosmetology

ANN DiAGASTINE
THERESE M. GUTH

MARIAN MONOCA
LOUISE HAHN

ROSE SASS



Alma Mater

*In our hearts there is a picture,
Shining bright and true,
It's a picture of our high school,
Our Dear Gold and Blue.*

*For your honor we shall struggle
On the Road of Fame,
Gratefully, dear Essex High School
Singing loud your name.*

*Though the years that go before us,
Dim our memory,
Recollections of our school days,
There will always be.*



Shooting Stars

CHEERLEADERS

MARGARET FIORELLO
DOROTHY SIMONSEN
JANE SOUTHERN

NANCY ANN BATTITO
JANICE ALLEN
PATRICIA SCHWARTZ



BOOKWORM OFFICERS

President

First semester Evelyn Melillo

Second semester Mary Kukoy

Vice-President Joan Gesior

Secretary Doris Girgenti

Treasurer Ann Gaeta

Representative to the Teen Corner

ARLENE MUSTO

The more things I learn, the more books there are to read about them. The more books I read, the more things I find out there are to learn.

N.C.T.E.—“Language Arts for Today’s Children”

L’O’Neill





Song Stars

JULIA MORGAN
MARY ROGERS
LOUISE GATTI
MARY MACCHIA
LOIS WELLS
LOUISE NICHOLS
ETTA MEOLA
JEAN ANDERSON
MILDRED WILLIAMS
BARBARA JAMES
CARMELLA VIZZONE
FLORENCE JOYNER
MARY NEEDHAM
CAROL TRAUTNER
MARY KUKOY
FRANCES CICALESSE
BRIDGET OTTALAGANO
MARIE D'ANGELANTONIO
SHEILA TISHLER
MARGUERITE JENKINS
EMMA VALENZA
CARMELLA FAZZARI
ROSEMARIE FAZZARI
FILOMENO DEO
SHIRLEY LANGLEY
ANGELA TOBIA
CATHERINE SEMBROT
MARIE FIORENTINO

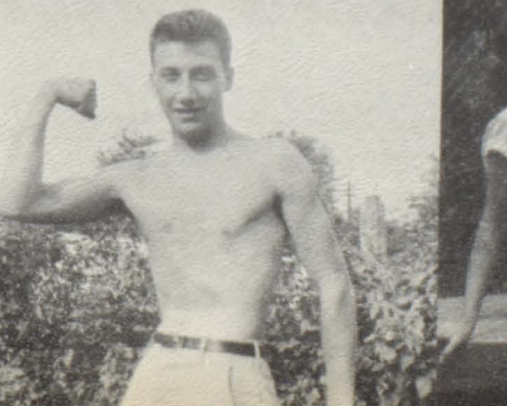
JEANETTE ANTONCZAK
NANCY CHRIS
MARGARET FIORELLO
DOROTHY MINOR
ROBERTA MOSES
BETTY GRIBBEN
JOYCE ERNST
LORETTA FERNANDES
DORIS GIRGENTI
CAROL CANTELLA
VIRGINIA SLUSSER
MARILYN DeVORE
MARJORIE LANGFORD
JOAN SLUBOSKI
ELEANORE BAUER
ELEANOR LIPSCOMB
JOSEPHINE KUKOY
MARIE INDANO
ROSE INDANO
GERALDINE LORENZETTI
LUCY WISE
RITA NOTTE
VIRGINIA REDDING
JUDITH O'BOYLE
ARLENE MUSTO
LOUISE KAROS
PAT ELSMAN



Customs, legends, and dance carols were the subjects of the Christmas program this year. The dance group, under Miss Whitney's direction, pictured for us the ancient Italian festival of St. Nicholas, and the charming English Yule Dance. The Glee Club told, through song, the many ways in which Christmas was celebrated in France, Italy, Germany, England and the United States. The beautiful stage set by Miss Reilly's group, the lovely dances and the singing of the carols under the direction of Mrs. Burnett, combined to make this a wonderful experience.









We Thank Our Lucky Stars

Arthur Medola
Anthony Cappozzi
Agnes and Gasper
Anita and Joe
Adele and Beverly
Allen Goldberger
A Friend
A Friend
Alice, Juanita, Walter Jordan
Angela and Jerry
Barbara Mendola
Barbara and Gerrie
Barbara and Joyce
Brother and Sister
"Bubs"
Bob and Tarzen
Connie Meola
Cathy and Bobby
"Chuby"
Carole and Jackie
Chip and Marge
Corporal Martin J. Culp (Army)
Dina and Tony
Danny Tafro
"Dave's Luncheonette"
Doris and Tommy
Dina Silvertri
Donald P. Miller
Don Kelly
Evelyn Melillo
Evelyn McElroy
Eddie Szostek
Edward Domaracki
Etta and Joe
Fran and Tony
Frances Santumo
Gerrie and Frank
Gerrie Lorenzetti
Geri and Walt
Ginny and Tony
George Keller
Gerry
Geraldine and Snoopy Battista
Helen and Jerry
Harry Schaefer, Jr.

Jane and Tommy
John (Seigie) Giunta
Joan and Bucky
Joni D'Alessio
Joan and Jimmy
Judy Ann O'Boyle
Joyce and Tommy
Judy
Jo and Ted
J.D. and M.K.
John De Vries
Johnny Scranton
Jacqueline Mullin
Joyce Topolinski
Joseph J. Kandre
Joanne Chianca
J. Morgan and M. Gray
J. Morgan and D. McGregor
Jack Chiperfield (U.S.M.C.)
Joe and Sandy
Joan and Dave
Loretta Fernandes
Louise and Betty
Lou and Liz
Lou Sarandoulis
Laura
Marge and Seigie
Mr. and Mrs. Marlewicz
Mr. and Mrs. Al Vinci
Mr. and Mrs. J. Danaski
Miss Ruth Freidman
Mom and Dad
Marilyn and Duddy
Mr. and Mrs. Giunta
Mr. and Mrs. Finan
Melody
Mrs. Emily Shilinski
Mary Ann
Mickey Schlitz
Marge and Brax
Mary Ann and Jackie
Miriam Keller
Mar and Don Kelly
Mary and Little John
Martin M.P.D.
Mr. and Mrs. Burton DeVore

Mr. Joseph Ostering
Miss Patricia Holman
Mr. and Mrs. Leonard Winters
Mr. and Mrs. Harry Brown
Mr. and Mrs. H. Holman
Mr. and Mrs. Walter Jordan
Mr. and Mrs. A. Ernst
Mr. and Mrs. John Daniels
M&M Twins
Mr. and Mrs. Philip Meola
North Jersey Electric
Pat and Mickey
Phyllis and ?
Rose and Ralph
Ronnie and Ray
Rita and Frankie
Richard Keller
Ro and Bill
Ralph Liquori
Rudy and Grace
Rosa and Freddie B.
Russell Wells
Ruth and Charlie DeVries
Ronnie and Teddy
Seigie
St. Joe's Cadets
S.S. Leyte
Sandy and Joe
Sandra Holman
Terry and Ray
Tony and Janet
Tony-boy
Terry and Buddy Masterson
The Future Lombardi
Turkey
Tommy Hall
Tommy Phillips
United States Marine Corps
United States Navy
Vinnie Meola
Vicki and Jimmy
William Red
Walter Keller
William M. Cogan

A dark, textured background filled with white stars of various sizes and shapes. A prominent shooting star with multiple long, curved white lines trailing behind it is positioned in the upper right quadrant.

ECLIPSE

With the help of everyone at Essex High, our four years of step building has been completed. They were built true and sturdy with an eye to the future, for we know that our work has just begun rather than finished. We've tried hard to build a firm foundation upon which to place our hopes and dreams.

Though we've enjoyed our stay here and shall hate to leave, we look forward to graduation with high hopes and great anticipation of the journey we shall continue to make.

As we say Farewell, our thanks and appreciation go to everyone who has played a part in the shaping of our future.





Acknowledgment

In appreciation . . .

The staff of the 1955 Athena wish to thank the following people for their invaluable aid to us in the production of our Yearbook.

Miss Marguerite Whitney, our faculty adviser, who so willingly gave her time and assistance in all phases of our publication.

Miss Pauline Reilly and members of the art department, for their outstanding art work.

Mr. Nicholas Jckes, of Colyer-Roux Printing Company, who has gone beyond the bounds of business relationship to insure the best yearbook possible.

The Sarony Studio for their beautiful photographs.

The faculty, students, and friends who supported the Athena in every way.

The editor wishes to express a personal "thank you," to her staff without whose help, she could never have accomplished the immense job of producing a yearbook.

A special "thank you" to the business concerns and patrons whose advertising and donations helped make this yearbook possible.

Compliments of

R. ODELL AND SONS COMPANY

New Jersey's Oldest and Largest Beauty

and Barber Supply Dealers

ESTABLISHED 1895

102 WASHINGTON STREET

NEWARK, NEW JERSEY

Compliments of

NEWARK'S SCHOOL SAVINGS BANK

THE HOWARD SAVINGS INSTITUTION

768 BROAD STREET, NEWARK 1, NEW JERSEY

MEMBER FEDERAL DEPOSIT INSURANCE CORPORATION

BEST WISHES TO

THE CLASS OF 1955

ESSEX COUNTY VOCATIONAL AND

TECHNICAL HIGH SCHOOL

ALUMNAE ASSOCIATION

JOSEPH NICASTRO

Restaurant — Bar — Grill

King of Spaghetti Sauces

217 Berkeley Avenue Newark 7, New Jersey
(Corner North 7th St.) HUmboldt 3-8937

HARRY J. STEVENS

REAL ESTATE & INSURANCE

478 Central Avenue
Newark, New Jersey
MArket 2-3580

GRUNING'S

*Home Made Ice Cream
and Candy*

496 Orange Street

Newark, N. J.

To the Class of 1955

Our Best Wishes

For Your Success and Happiness

from the

BOOKWORMS

Congratulations to
my niece
BARBARA THOMPSON
from
UNCLE FRED

JOHN ANDERSON
Painting and Decorating

69 Harper Avenue

Irvington 11, New Jersey

ESsex 4-6827

GENERAL CONTRACTOR

MASTER BAKERY

Italian and French Bread and Rolls
Sold at Better Food Stores in Jersey

Home Deliveries

65 Summer Avenue, Newark, N. J.

HUmboldt 2-8354

Compliments of

THE PLAZA THEATRE

North 7th & Orange Streets

Newark, N. J.

HUmboldt 5-9717

Parking Two Doors Up Mitchell 2-8826

No Appointment Necessary

Open Every Evening 9:50 a.m. to 9:00 p.m.

BERNARD HAIRDRESSER

"Free Hair Consultation"

Permanent Waving

Specializing: Hair Tinting — Coloring

Hair Shaping — Scalp Treatment

6 W. Park Street

Newark, N. J.

Opposite Klein's Dept. Store

MAYERS CLEANERS

104 Roseville Avenue

We Do Our Own Cleaning

5 Hour Cleaning Service

Newark, N. J.

KIELB'S QUALITY BAKERY

and Sweet Shoppe

Ice Cream Birthday Cakes Our Specialty

Phone NU 20065

MODERN BEAUTY SALON

259 Centre Street

Nutley, N. J.

Proprietors (Ann & Jo Gitto)

Assistant (Dolores Gaeta)

Congratulations

Class '55

from

MR. AND MRS. MASSENZIO

RAUSCH'S SWEETSHOP

133 Roseville Ave.

Newark, N. J.

HUmboldt 3-9194

Blgelow 3-9152 *Once Tried Always Pleased*

MOE STERN'S

Bakery — Delicatessen

Restaurant

Specializing in Bavaria — Pies in Season

105½ Elizabeth Avenue, Newark, New Jersey

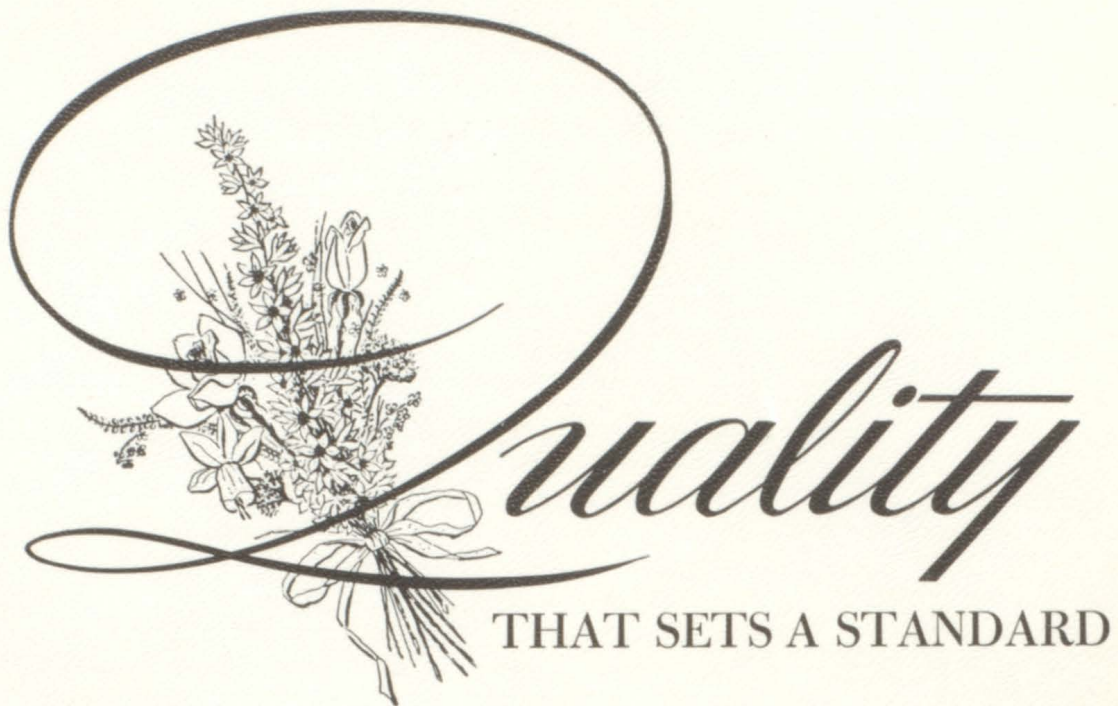


Sarony Photographers

362 Fifth Avenue

New York 1, New York





*The most significant form of
human communication ~ reproduction of
word and picture by printing ~ is
worthy of the creative planning,
skilled craftsmanship, modern equip-
ment, and dependable services
by which the Colyer-Roux Printing
Company seeks to make every job
an ideal of perfection.*

COLYER-ROUX Printing Company

NEWARK 4, N. J.

SUSSEX AVE. & DEY ST.



